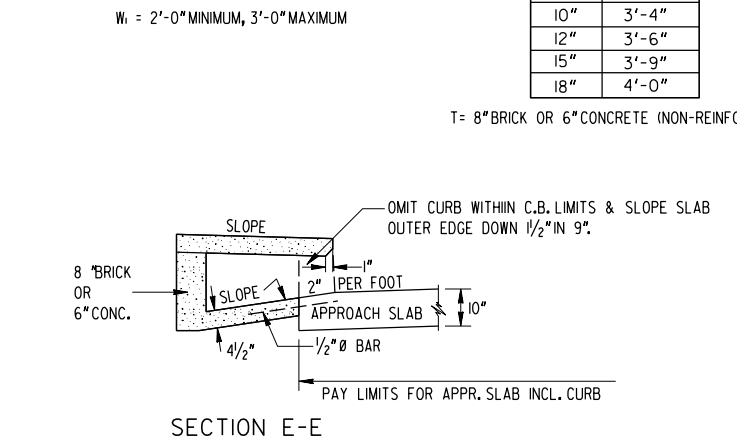
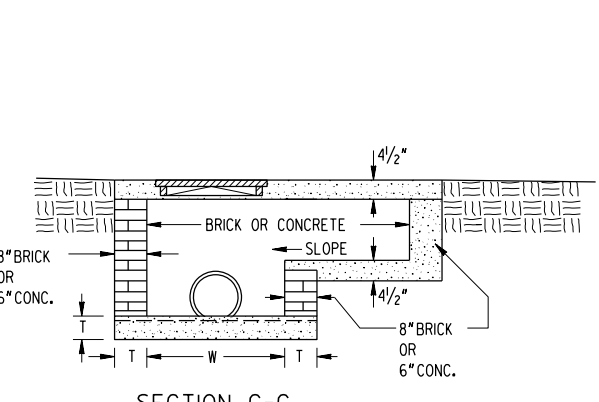
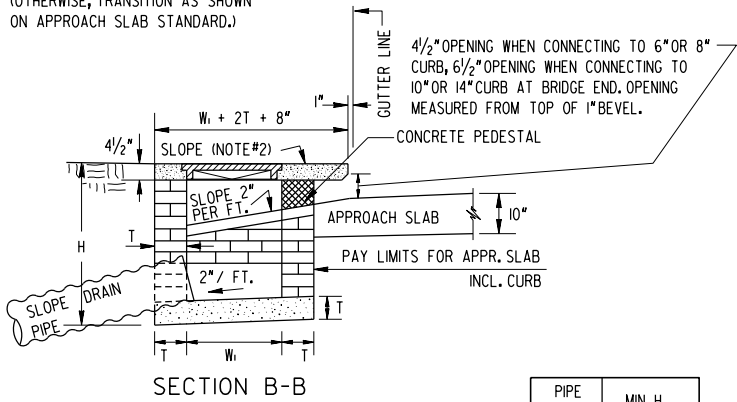
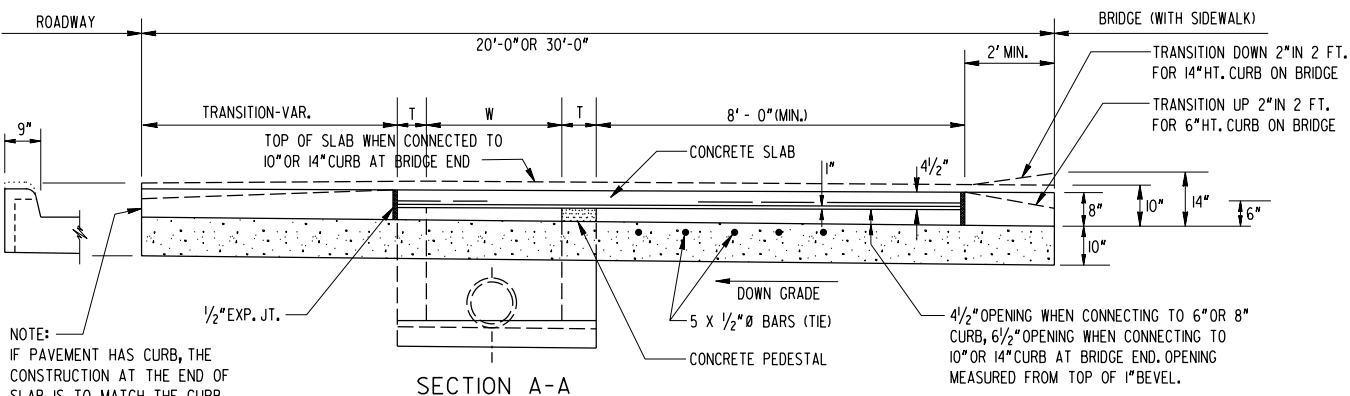
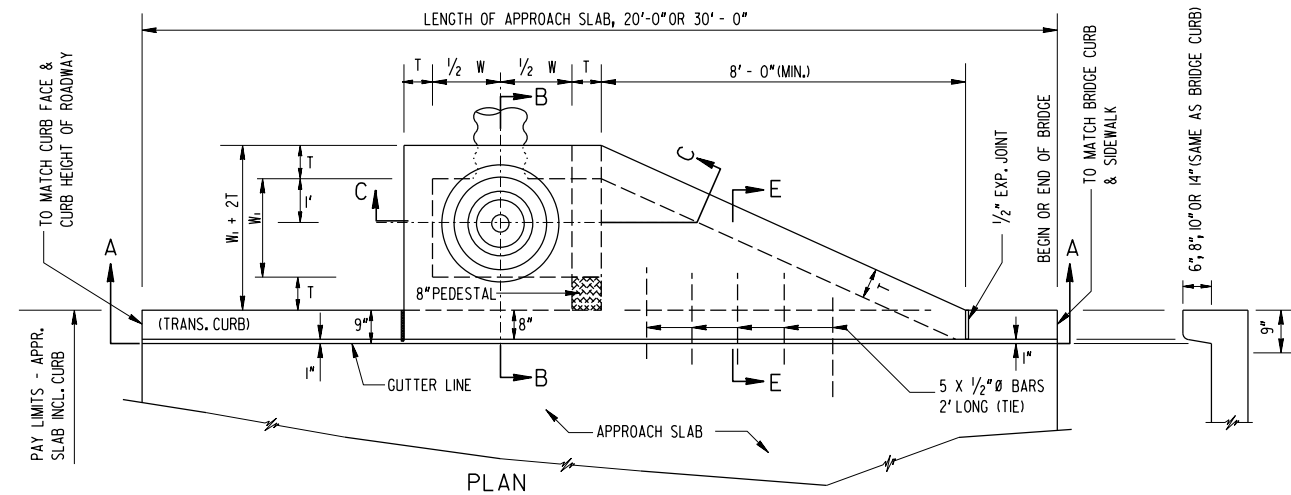
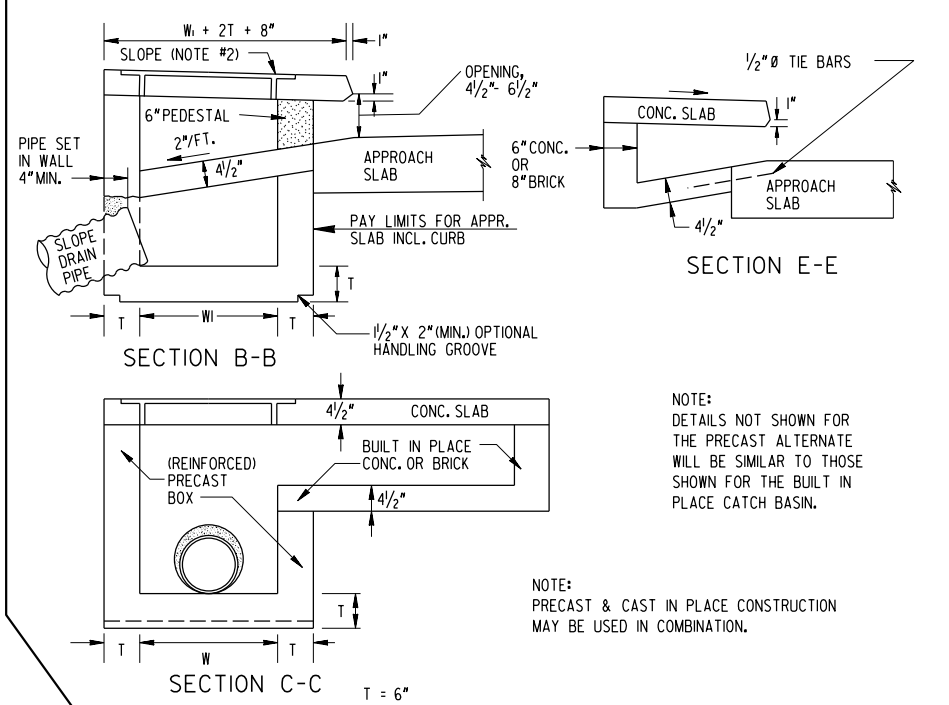
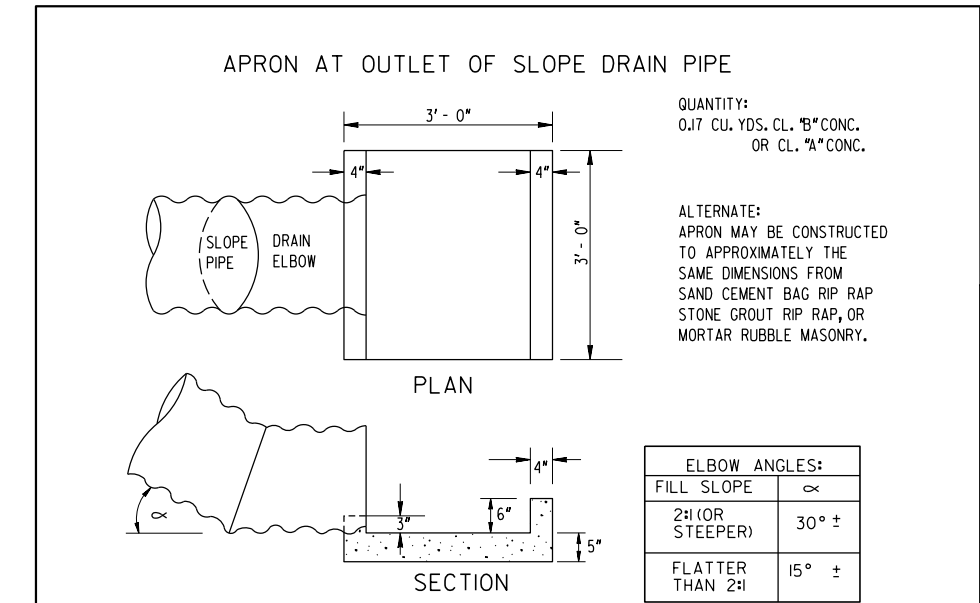
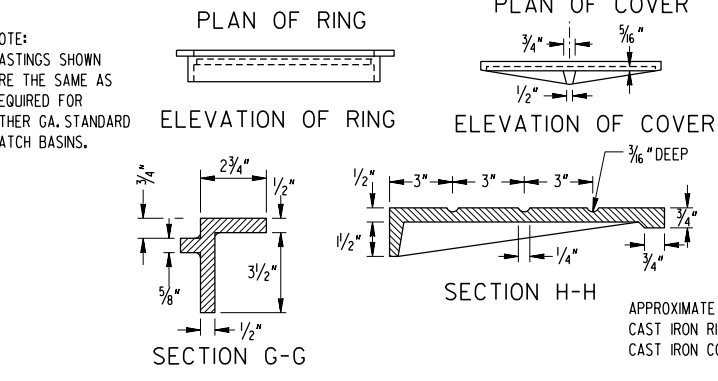
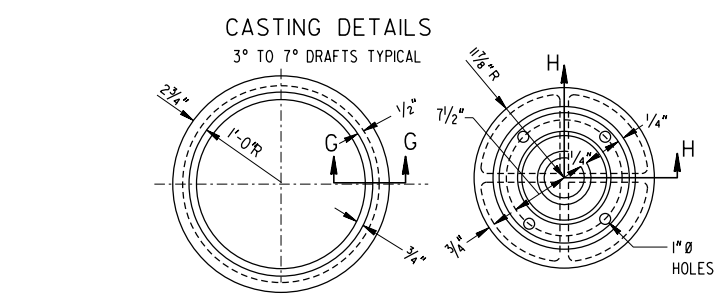
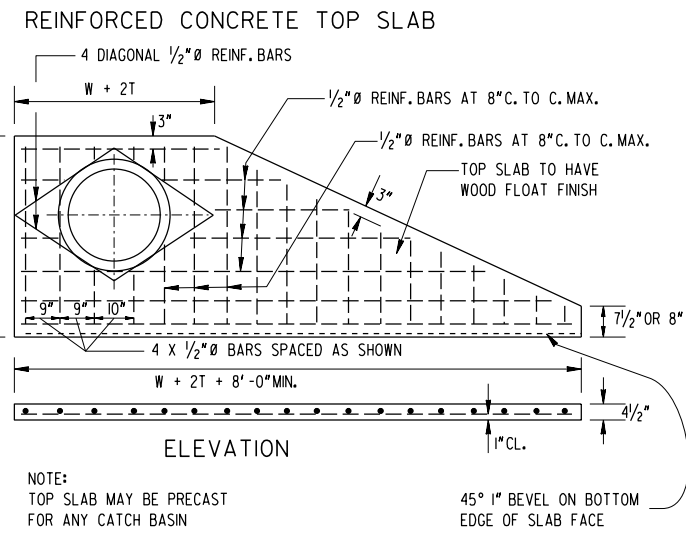


CATCH BASIN (BUILT IN PLACE) ADJACENT TO APPROACH SLAB



PIPE SIZE	MIN. H
10"	3'-4"
12"	3'-6"
15"	3'-9"
18"	4'-0"

T = 8" BRICK OR 6" CONCRETE (NON-REINFORCED)



NOTE: DETAILS NOT SHOWN FOR THE PRECAST ALTERNATE WILL BE SIMILAR TO THOSE SHOWN FOR THE BUILT IN PLACE CATCH BASIN.

NOTE: PRECAST & CAST IN PLACE CONSTRUCTION MAY BE USED IN COMBINATION.

NOTE: ALL PRECAST CONCRETE BOXES SHALL BE REINFORCED IN BOTTOM AND ALL SIDES THROUGHOUT WITH EITHER A CAGE OF 2/2, 6x6 WELDED WIRE FABRIC OR #4 BARS ON 12" CENTERS, MINIMUM COVER OVER REINFORCING SHALL BE 2" AT ALL POINTS.

- GENERAL NOTES:
- (1) NORMAL USE OF THIS STANDARD IS WHERE CURB OR CURB AND GUTTER IS ADJACENT TO ROADWAY WITH CURB AND/OR SIDEWALK ACROSS BRIDGE. SEE STD. 9017J FOR SPILLWAYS (RURAL SECTION TYP.).
  - (2) THE LOCATION OF GUARDRAIL SHOULD BE DETERMINED BEFORE CATCH BASIN IS SPECIFIED; IF TOP SLAB CONFLICTS WITH GUARDRAIL POSTS, DRAINAGE SHOULD BE CARRIED ACROSS THE APPROACH SLAB TO A ROADWAY DROP INLET.
  - (3) CATCH BASIN TOP SLAB SHALL BE SLOPED 1/4" PER FT. TOWARDS THE APPROACH SLAB OR SHALL BE SLOPED TO MATCH ADJACENT SURFACES OR TO GIVE THE DESIRED TRANSITION BETWEEN THE ROADWAY AND BRIDGE SIDEWALK GRADES AND CURB HEIGHTS.
  - (4) SEE SEPARATE STANDARD (9017K OR 9017L TYPICAL) FOR APPROACH SLAB DETAILS.
  - (5) A 1/2" EXPANSION JOINT SHALL BE REQUIRED AT ALL POINTS WHERE A CATCH BASIN INTERCEPTS CONCRETE SIDEWALK.
  - (6) SPECIFICATIONS: GEORGIA STANDARD, CURRENT EDITION, AND SUPPLEMENTS THERETO.

DEPARTMENT OF TRANSPORTATION  
 STATE OF GEORGIA

STANDARD  
 CATCH BASIN  
 (PRECAST OR BUILT IN PLACE)  
 ADJACENT TO APPROACH SLAB

NOT TO SCALE  
 REDRAWN JULY 2024  
 AUGUST, 1983

DES. R.M.J. (SUBMITTED)  
 DRW. R.M.J.  
 TRA. G.M.E. (APPROVED)  
 CHK. R.K.C.  
 STATE HIGHWAY ENGINEER

NUMBER  
 9017C