

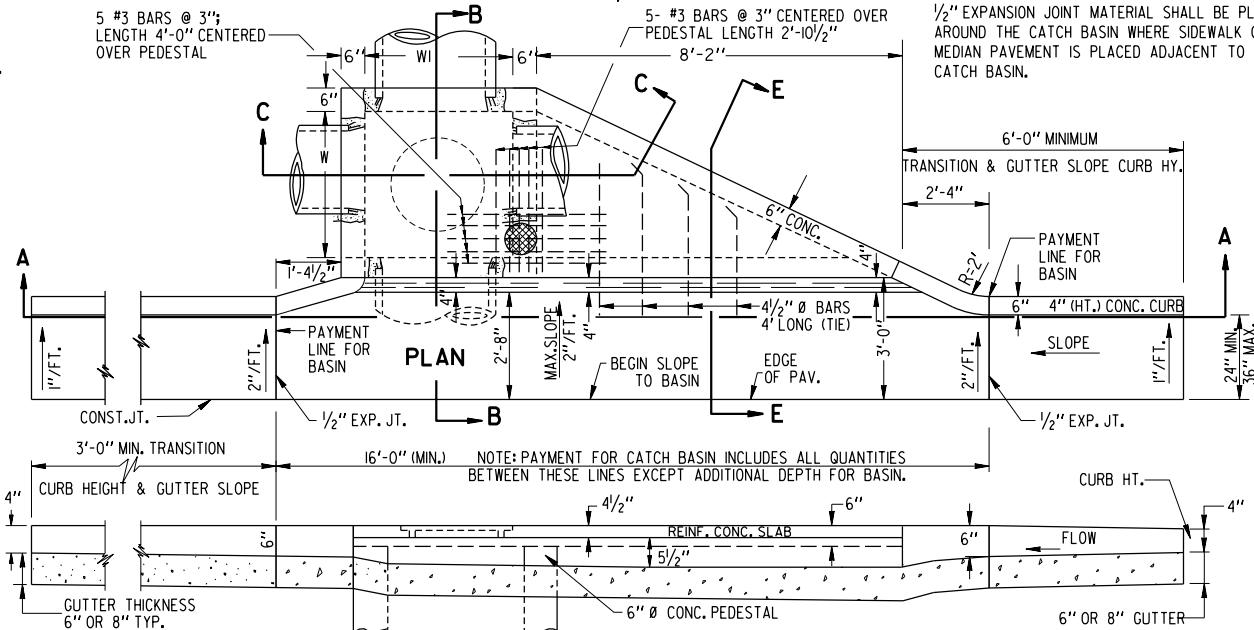
NOTE:
OPENING FOR PIPE SHALL BE
THE OUTSIDE DIAMETER OF
THE REQUIRED PIPE PLUS 1" MIN.
OPENING SHALL HAVE CORRUGATIONS.

5 #3 BARS @ 3"
LENGTH 4'-0" CENTERED
OVER PEDESTAL

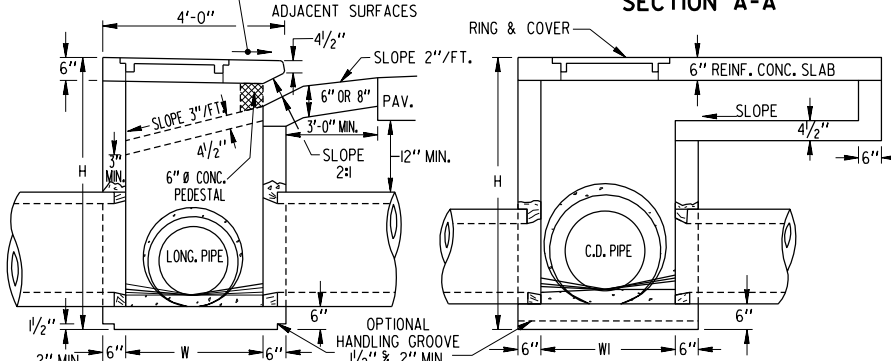
CATCH BASIN (IF CATCH BASIN HAS LONGITUDINAL PIPE
OVER 24", SEE DETAILS AT RIGHT)

5- #3 BARS @ 3" CENTERED OVER
PEDESTAL LENGTH 2'-10 1/2"

NOTE FOR ALL CATCH BASINS:
1/2" EXPANSION JOINT MATERIAL SHALL BE PLACED
AROUND THE CATCH BASIN WHERE SIDEWALK OR
MEDIAN PAVEMENT IS PLACED ADJACENT TO THE
CATCH BASIN.

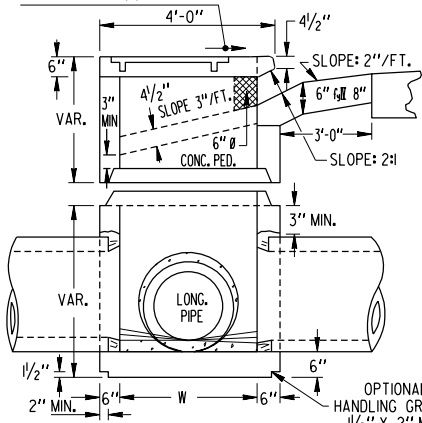


SECTION A-A

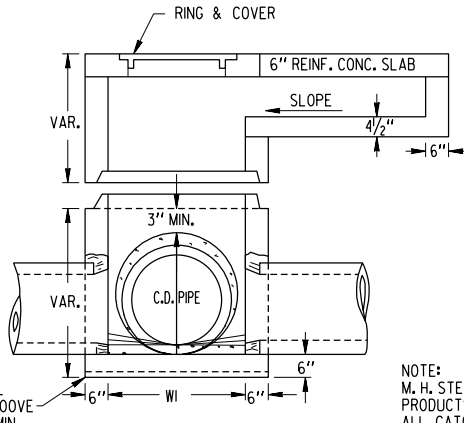


SECTION B-B
FOR MIN. HEIGHT

SLOPE SAME AS ADJACENT
SURFACES - 1/4" / FT. TYP.

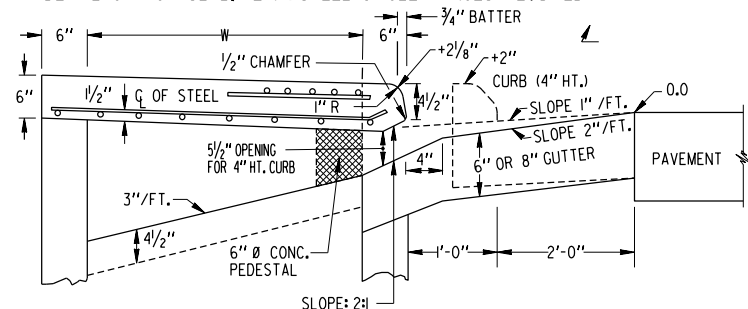


SECTION B-B
FOR ADDITIONAL HEIGHT

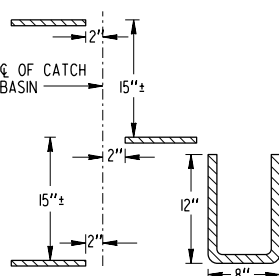


SECTION C-C
FOR ADDITIONAL HEIGHT

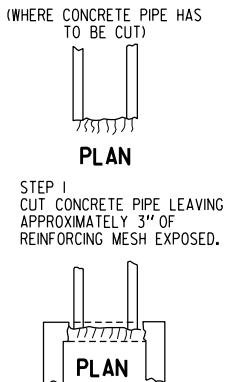
DETAIL OF TOP SLAB; REINF. STEEL & CLEARANCES REQUIRED



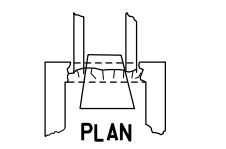
DETAIL AND ARRANGEMENT
OF LADDER BARS



METHOD OF
CONNECTING PIPE
(WHERE CONCRETE PIPE HAS
TO BE CUT)



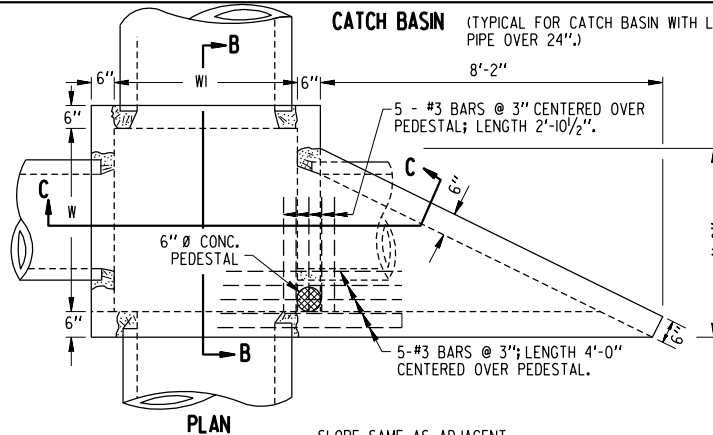
STEP 2
POSITION PIPE APPROXIMATELY
3" INTO OPENING OF WALL.



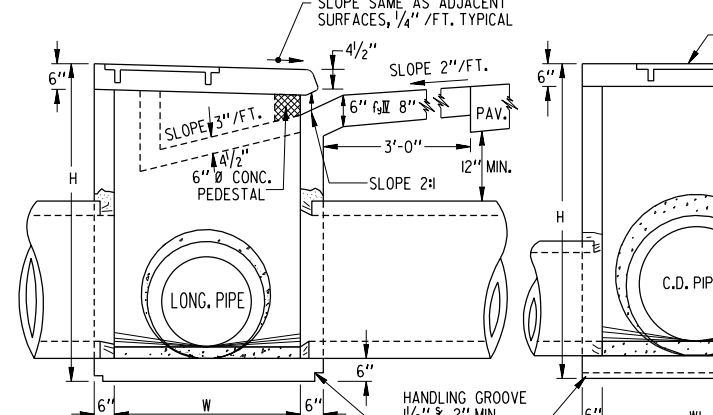
STEP 3
POSITION CONICAL CORE INSIDE
OF PIPE AND SEAL WITH GROUT
(1/2" MIN. THICKNESS OF GROUT).
REMOVE CORE WHEN SET AND RUB
GROUT TO SEAL JOINTS.

CATCH BASIN

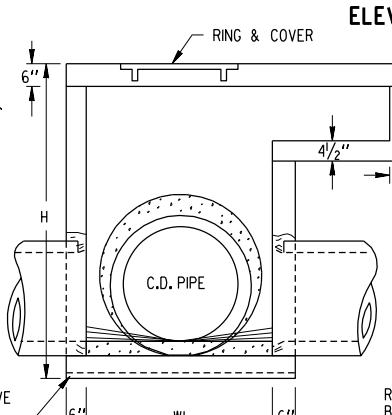
(TYPICAL FOR CATCH BASIN WITH LONGITUDINAL
PIPE OVER 24")



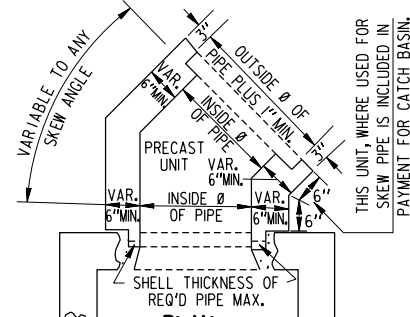
PLAN



SECTION B-B



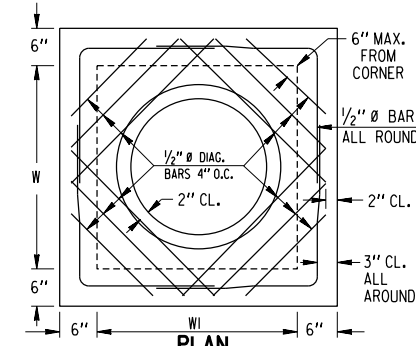
SECTION C-C



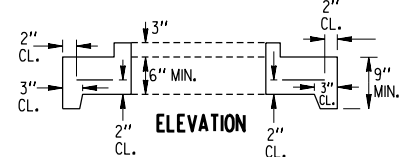
A METHOD OF CONNECTING SKEWED PIPE

IF THIS SWIVEL SECTION SLAB IS USED TO
REDUCE THE W AND W1 DIMENSIONS, INCREASE
THE MIN. THICKNESS TO 9" AND USE REINF.
STEEL. SEE DETAIL BELOW.

DETAIL FOR REINFORCED STEEL

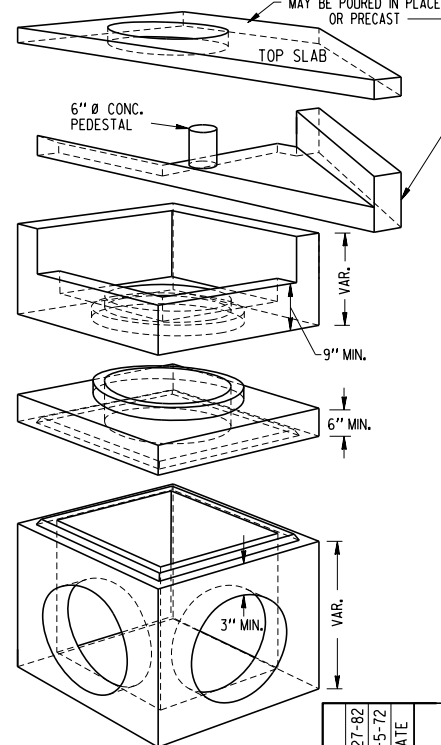


PLAN

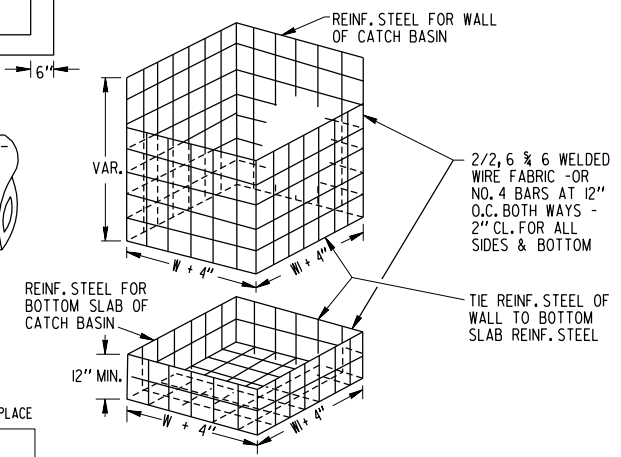


ELEVATION

TYPICAL ISOMETRIC VIEW



REINFORCING - ISOMETRIC VIEW



NOTE:
REINFORCING SHOWN ABOVE IS REQUIRED FOR BOX
SHAPE BASIN. REINFORCING FOR CIRCULAR PRECAST
ALTERNATE SHALL BE ACCORDING TO STD. 1040.

ALL JOINTS BETWEEN PRECAST RISERS OR BETWEEN PRECAST
BASE AND RISER WILL BE KEYS. KEYS JOINTS SHOWN
ARE TYPICAL AND MAY BE VARIED.

DIMENSIONS FOR CATCH BASINS		
PIPE SIZE	NORMAL W OR W1	MIN H
12"	3'-0"	4'-4"
15"	3'-0"	4'-7"
18"	3'-0"	4'-10"
24"	3'-0"	5'-6"
30"	3'-6"	6'-2"
36"	4'-0"	6'-10"
42"	5'-0"	7'-4"
48"	5'-0"	8'-0"
54"	6'-0"	8'-6"
60"	6'-0"	9'-2"

NOTE:
DIMENSIONS FOR CATCH BASINS
ARE BASED UPON TYPICAL OUTSIDE
DIAMETERS OF CONCRETE PIPES
AND MAY BE VARIED IF CONDITIONS
PERMIT AND THE ENGINEER
APPROVES. W & W1 DIMENSIONS
DO NOT HAVE TO BE EQUAL.

ALTERNATE:
BUILT-IN-PLACE, PRECAST BOX,
AND/OR PRECAST CIRCULAR UNITS
WITH THE REQUIRED ADAPTERS,
REDUCERS, FITTINGS, CONNECTIONS,
ETC. MAY BE USED IN
COMBINATIONS.

NOTE:
FOR RING & COVER DETAILS AND
OTHER DETAILS NOT SHOWN, SEE
STANDARD 1033E FOR BUILT-
IN-PLACE CATCH BASIN.

DEPARTMENT OF TRANSPORTATION
STATE OF GEORGIA

STANDARD
PRECAST CATCH BASINS
FOR USE WITH CURB (4" HT.) & GUTTER

9-27-82	5-5-72	DATE
GENERAL REVISIONS	REV. C. B. THROAT	DESIGN
R.M.U.	R.M.U.	BY
DESIGNED	STATE	DESIGNED
DRAWN	STATE	DRAWN
TRACED	STATE	TRACED
CHECKED	STATE	CHECKED

NOT TO SCALE
DESIGNED BY
DRAWN BY
TRACED BY
CHECKED BY
STATE HIGHWAY ENGINEER
FEB. 1967
NUMBER
1033E
PRECAST