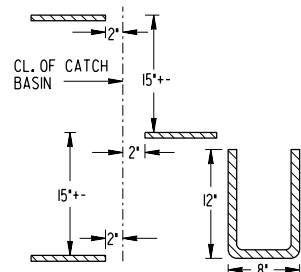
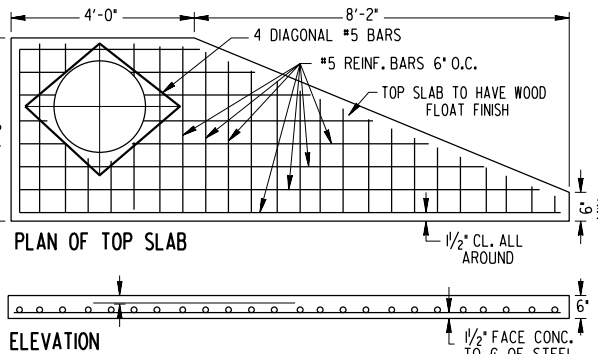
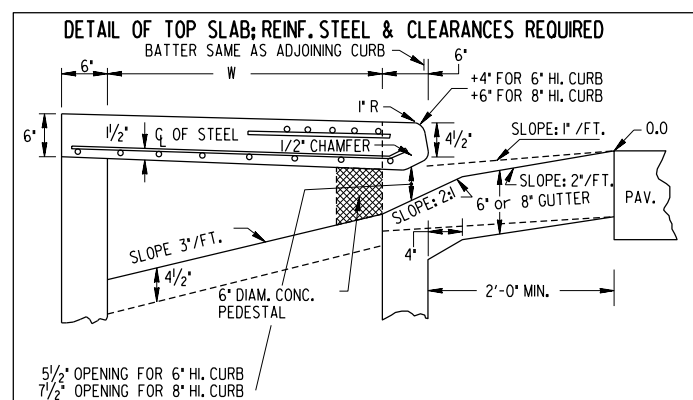
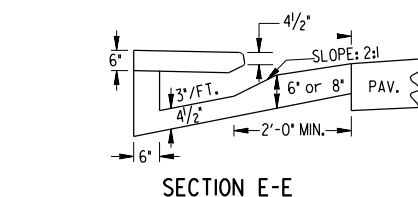
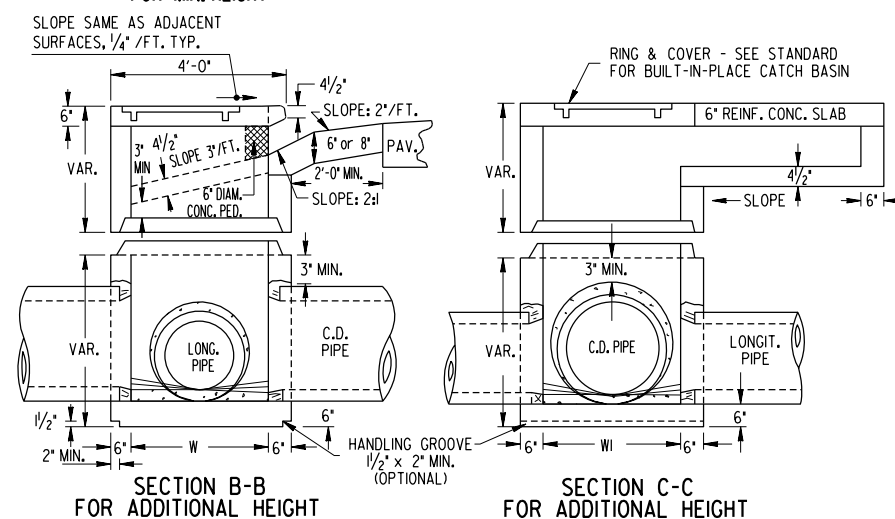
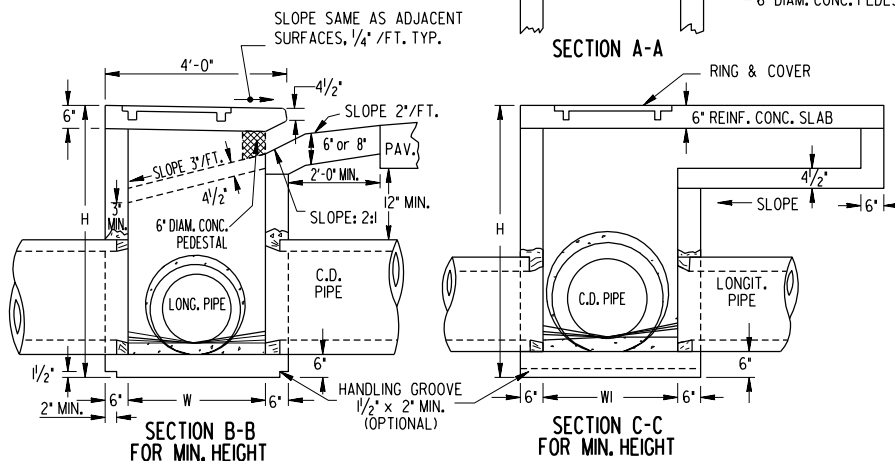
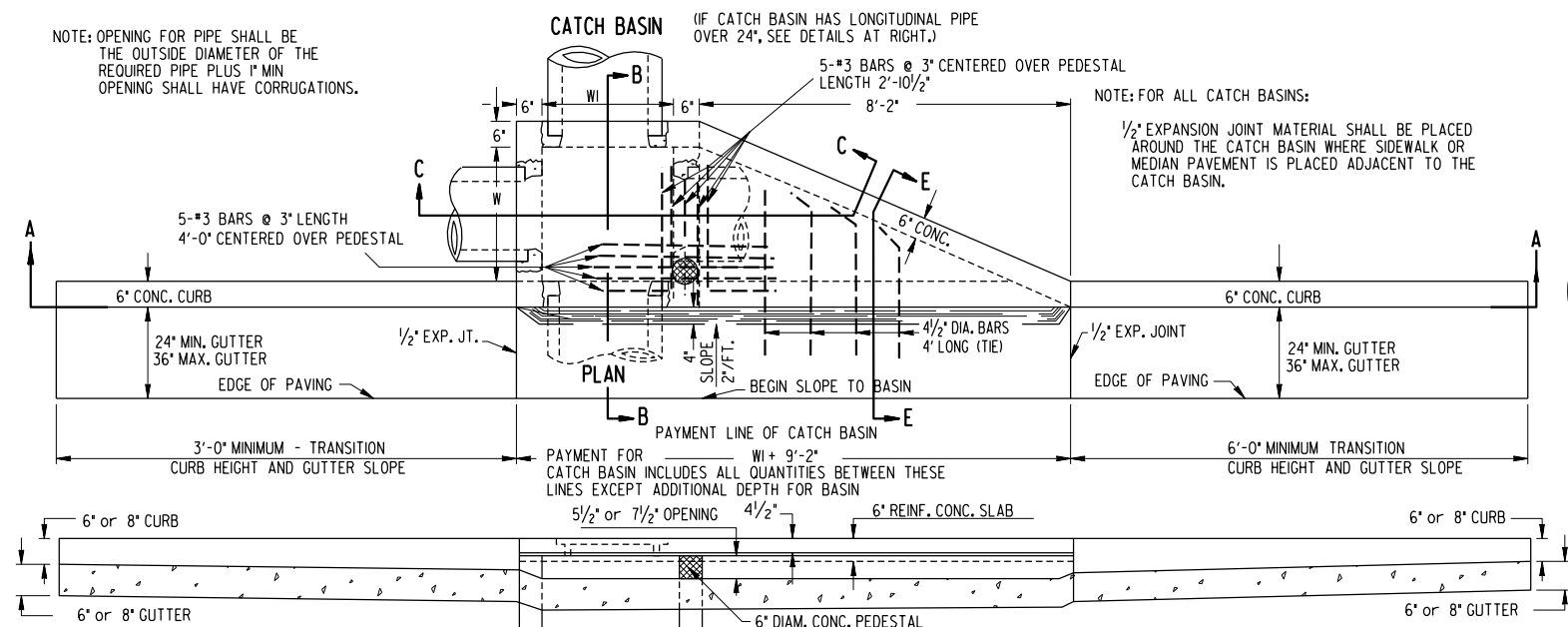
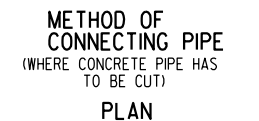


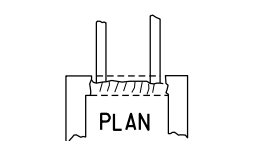
NOTE: OPENING FOR PIPE SHALL BE
THE OUTSIDE DIAMETER OF THE
REQUIRED PIPE PLUS 1" MIN
OPENING SHALL HAVE CORRUGATIONS.



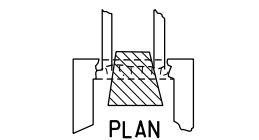
NOTE:
NUMBER AND LOCATION OF LADDER BARS IN
CATCH BASIN TO BE AS DIRECTED BY THE ENGINEER
M.H. STEPS LISTED IN GA. D.O.T. LABORATORY'S
QUALIFIED PRODUCTS LIST MAY BE SUBSTITUTED.



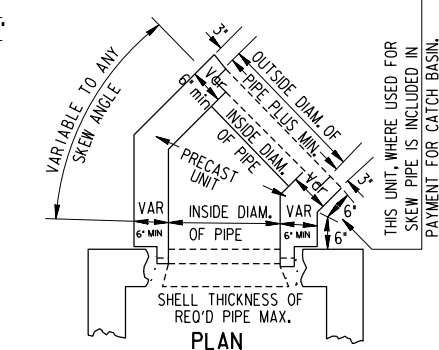
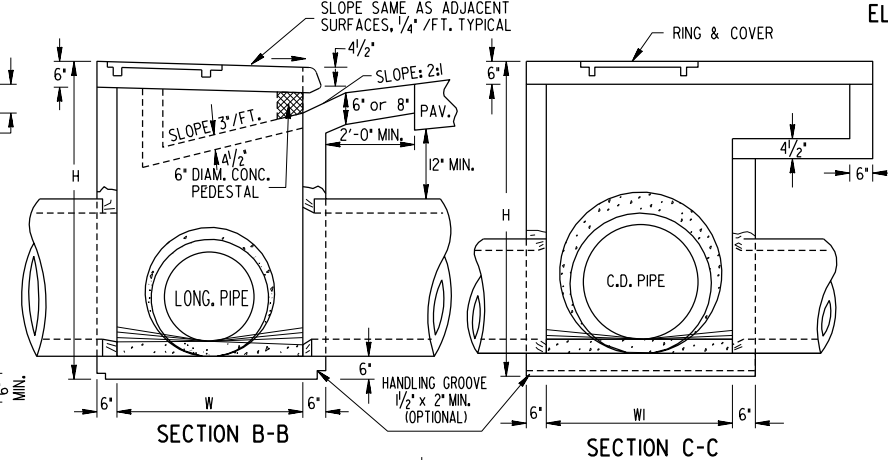
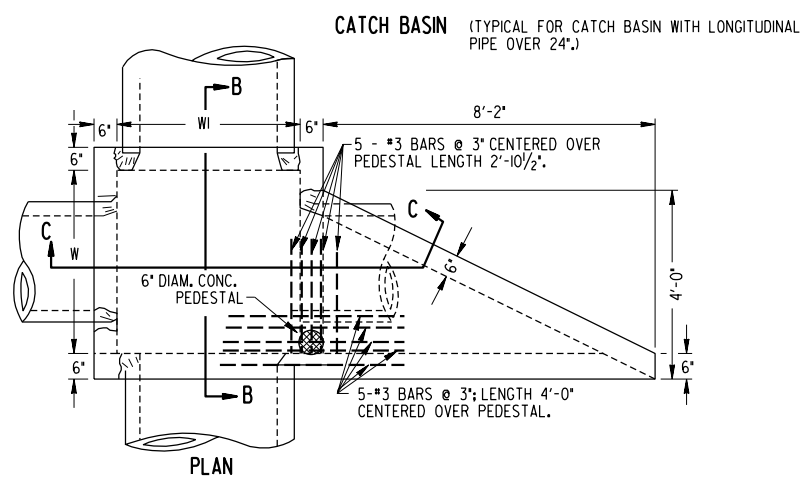
STEP 1
CUT CONCRETE PIPE LEAVING
APPROXIMATELY 3" OF
REINFORCING MESH EXPOSED.



POSITION PIPE APPROXIMATELY
3' INTO OPENING OF WALL

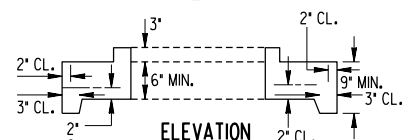
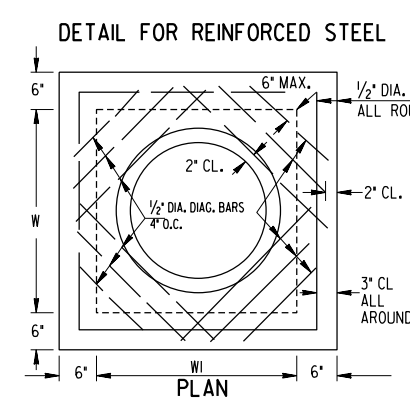


STEP 3
POSITION CONICAL CORE INSIDE
OF PIPE AND SEAL WITH GROUT
(1/2" MIN. THICKNESS OF GROUT).
REMOVE CORE WHEN SET AND RUB
GROUT TO SEAL JOINTS.



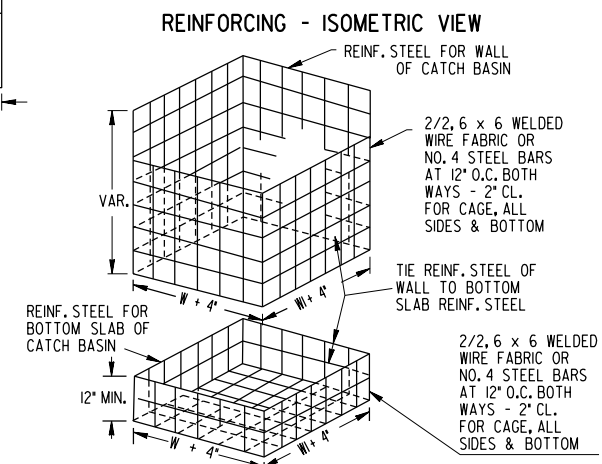
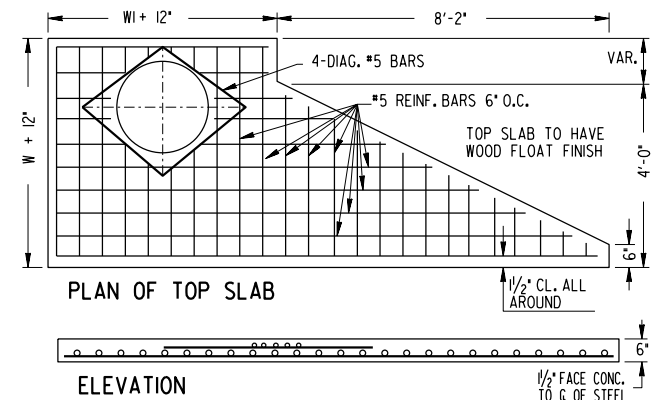
A METHOD OF CONNECTING SKEWED PIPE

IF THIS SWIVEL SECTION SLAB IS USED TO
REDUCE THE W AND WIDIMENSIONS, INCREASE
THE MIN. THICKNESS TO 9" AND USE REINF.
STEEL. SEE DETAIL BELOW.



SWIVEL SECTION MAY BE USED WHERE
SKEWED PIPE CONNECTS TO PRECAST
CONCRETE BOX.

THE ABOVE VIEW DEPICTS PRECAST BOX. SEE SEPARATE STANDARDS FOR CIRCULAR ALTERNATE OR BUILT-IN-PLACE BOX.



NOTE:
REINFORCING SHOWN ABOVE IS REQUIRED FOR BOX
SHAPED BASIN. REINFORCING FOR CIRCULAR PRECAST
ALTERNATE SHALL BE ACCORDING TO STD. 1040.

ALL JOINTS BETWEEN PRECAST RISERS OR BETWEEN PRECAST
BASE AND RISER WILL BE KEYED. KEYED JOINTS SHOWN
ARE TYPICAL AND MAY BE VARIED.

DIMENSIONS FOR CATCH BASINS		
PIPE SIZE	NORMAL W OR W ₁	MIN H
12"	3'-0"	4'-4"
15"	3'-0"	4'-7"
18"	3'-0"	4'-10"
24"	3'-0"	5'-6"
30"	3'-6"	6'-2"
36"	4'-0"	6'-10"
42"	5'-0"	7'-4"
48"	5'-0"	8'-0"
54"	6'-0"	8'-6"
60"	6'-0"	9'-2"

NOTE:
DIMENSIONS FOR CATCH BASINS
ARE BASED UPON TYPICAL OUTSIDE
DIAMETERS OF CONCRETE PIPES
AND MAY BE VARIED IF CONDITIONS
PERMIT AND THE ENGINEER
APPROVES. W & WIDIMENSIONS
DO NOT HAVE TO BE EQUAL.

ALTERNATE:
BUILT-IN-PLACE, PRECAST BOX,
AND/OR PRECAST CIRCULAR UNITS
WITH THE REQUIRED ADAPTERS,
REDUCERS, FITTINGS, CONNECTORS,
ETC. MAY BE USED IN
COMBINATIONS.

NOTE:
FOR RING & COVER DETAILS AND
OTHER DETAILS NOT SHOWN, SEE
STANDARD 1033D FOR BUILT-
IN-PLACE CATCH BASIN.

		DATE	DEPARTMENT OF TRANSPORTATION STATE OF GEORGIA	
		REVISION	STANDARD PRECAST CATCH BASINS FOR USE WITH CURB (6" OR 8"HT.) & GUTTER	
			NOT TO SCALE	REDRAWN JULY 2024 SEPT. 1982
	BY	REV. & REDR. B.M.J. TRA. G.M.E. CHK. R.K.C.	(SUBMITTED) <i>Howard E. Hardy</i> STATE ROAD & AIRPORT DESIGN ENGR. (APPROVED) <i>Thomas D. Moreland</i> STATE HIGHWAY ENGINEER	NUMBER 1033D PRECAST