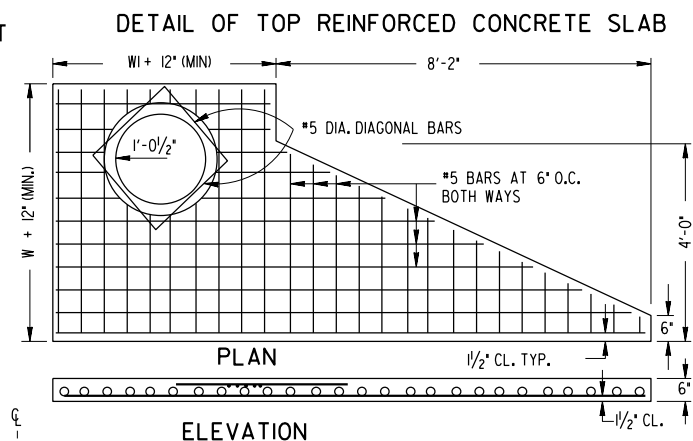
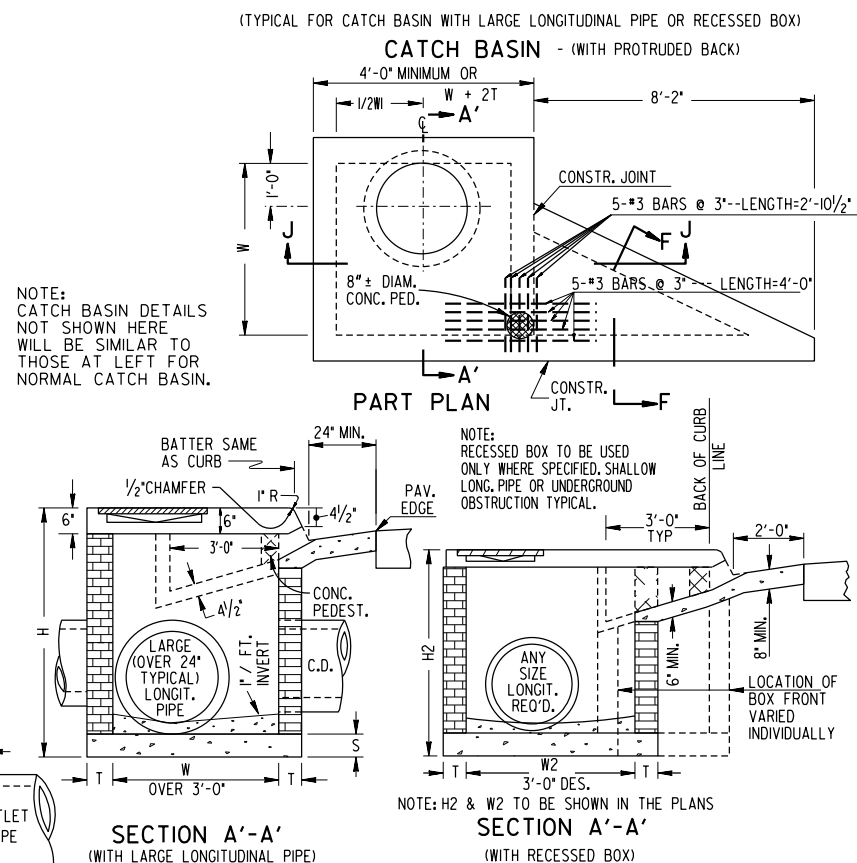
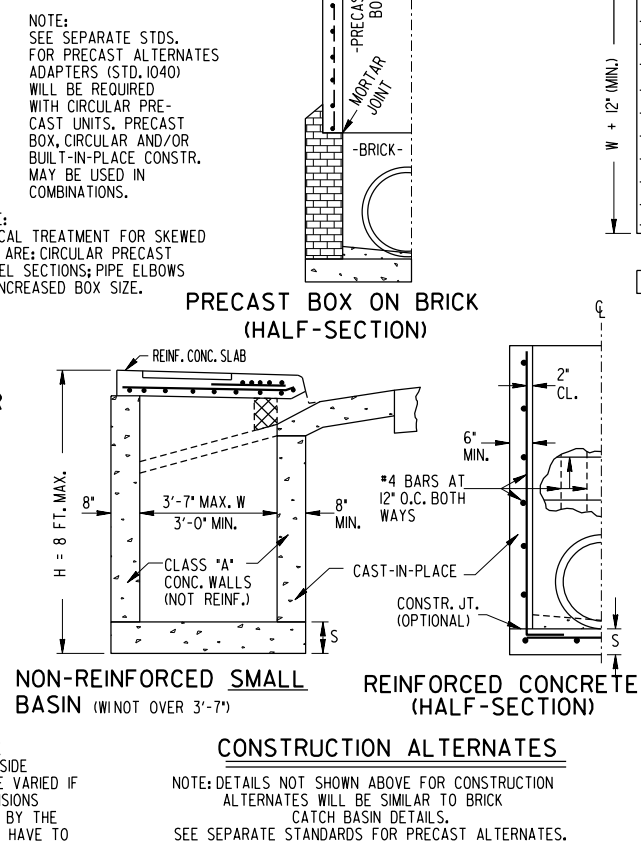


DEPTH LIMITS FOR INCREASING "T"				
TYPICAL MIN. DIMENSIONS				
PIPE DIA.	H (MIN.)	W OR W1	Δ E (MIN.)	
12	4'-4"	3'-0"	3'-3"	
15	4'-7"	3'-0"	3'-6"	
18	4'-10"	3'-0"	3'-9"	
24	5'-6"	3'-0"	4'-4"	
30	6'-2"	3'-7"	5'-0"	
36	6'-10"	4'-6"	5'-7"	
42	7'-4"	5'-3"	5'-11"	
48	8'-0"	6'-0"	6'-6"	
54	8'-6"	6'-8"	7'-0"	
60	9'-2"	7'-4"	7'-7"	

NOTE: THE MIN. H & MIN. Δ E GIVEN IN ABOVE TABLE ARE BASED UPON TYPICAL OUTSIDE DIAMETERS OF CONC. PIPE AND MAY BE VARIED IF CONDITIONS PERMIT WITH VARIED DIMENSIONS SPECIFIED IN THE PLANS OR DIRECTED BY THE ENGINEER. W & W1 DIMENSIONS DO NOT HAVE TO BE EQUAL.



			DATE	DEPARTMENT OF TRANSPORTATION STATE OF GEORGIA	
			REVISION	STANDARD CATCH BASINS FOR USE WITH CURB (6"HT. OR 8" HT.) & GUTTER	
				NOT TO SCALE	REDRAWN JULY 2024 AUG. 1982
BY	REV. & REDR. R.M.U. TRA. G.M.E. CHK. R.K.C.	(SUBMITTED) <i>David E. Hardy</i> STATE ROAD & AIRPORT DESIGN ENGR.	(APPROVED) <i>Thomas D. ...</i> STATE HIGHWAY ENGINEER	NUMBER 1033D	