



July 14, 2011

Thank you for attending the public information and detour open house for P.I. Nos. 122110 and 122260, Franklin and Stephens County, the proposed widening, reconstruction and relocation of State Route 17 from approximately 3.1 miles northwest of the SR 17/I-85 interchange in Franklin County to just southeast of the SR 17/Memorial Drive intersection in the City of Toccoa in Stephens County. In this handout package you will find a project description, location map, and comment card.

As you enter the room, you will notice displays of the proposed project and the proposed detour route. Georgia Department of Transportation (GDOT) representatives, who can be identified by the nametags they are wearing, are available to discuss the project and proposed detour route and answer your questions. Please take this opportunity to discuss the project with a GDOT representative. There will be no formal presentation.

A court reporter will be available for those persons who would like to make a verbal statement about the project. You may also complete a comment card and deposit it into the box provided here, or send in written comments about the project until July 28, 2011. Written comments should be sent to Mr. Glenn Bowman, P.E., State Environmental Administrator, Georgia Department of Transportation, 600 West Peachtree Street NW, 16th Floor, Atlanta, Georgia 30308. Comments can also be made via the web at www.dot.ga.gov. Click on **Public Outreach** from the **Information Center** dropdown menu at the top right side of the page. All comments will be made a part of the project record. We hope you will take advantage of one of these opportunities to let GDOT know your view of the proposal.

The displays and plans will be available for review for ten days after the public information and detour open house at the Georgia Department of Transportation District 1 Office located at 2505 Athens Highway SE, Gainesville, Georgia 30507 and the Georgia Department of Transportation Area 2 Office located at 4304 Toccoa Highway, Clarkesville, Georgia 30523. A copy of all comments received will be available for public review at these locations and at the Georgia Department of Transportation, Office of Environmental Services, 600 West Peachtree Street NW, 16th Floor, Atlanta, Georgia 30308, as soon as compilation is completed.

Again, thank you for attending this public information and detour open house and for giving us your comments. If you should have any questions or need additional information, feel free to contact the project manager Brandon Kirby at 678-343-0816 or Paul Alimia at 404-631-1353 of the Office of Environmental Services.

Sincerely,

A handwritten signature in cursive script that reads "Bobby Hilliard".

Bobby Hilliard, P.E.
State Program Delivery Engineer

BH/BLB
Attachments

Public Information and Detour Open House
P.I. Nos. 122110 and 122260, Franklin and Stephens County
July 14, 2011
Project Description

Project EDS00-545-00(20), P.I. no. 122110, located in Franklin and Stephens Counties proposes to widen the existing State Route (SR) 17 from a two-lane rural highway to a four-lane rural divided highway. The bypass project begins 0.75 miles south of the Franklin/Stephens County line, utilizing a 44-foot grassed median throughout the length of the project, and ends approximately 1500-feet northwest of Scott Road (CR 24). From its beginning point, the alignment continues along its original course for approximately 0.25 miles. It then diverges from the existing SR 17, crossing back over the original alignment and Hartwell Railroad with a pair of parallel bridges. Just beyond Price Road, the proposed alignment then runs northeast along the county line before taking a 1 mile long curve to the left into Stephens County. The proposed SR 17 alignment runs at an offset of approximately 0.5 miles from the existing SR 17 alignment until it rejoins the original alignment near Scott Road (CR24) as it approaches the end of the project.

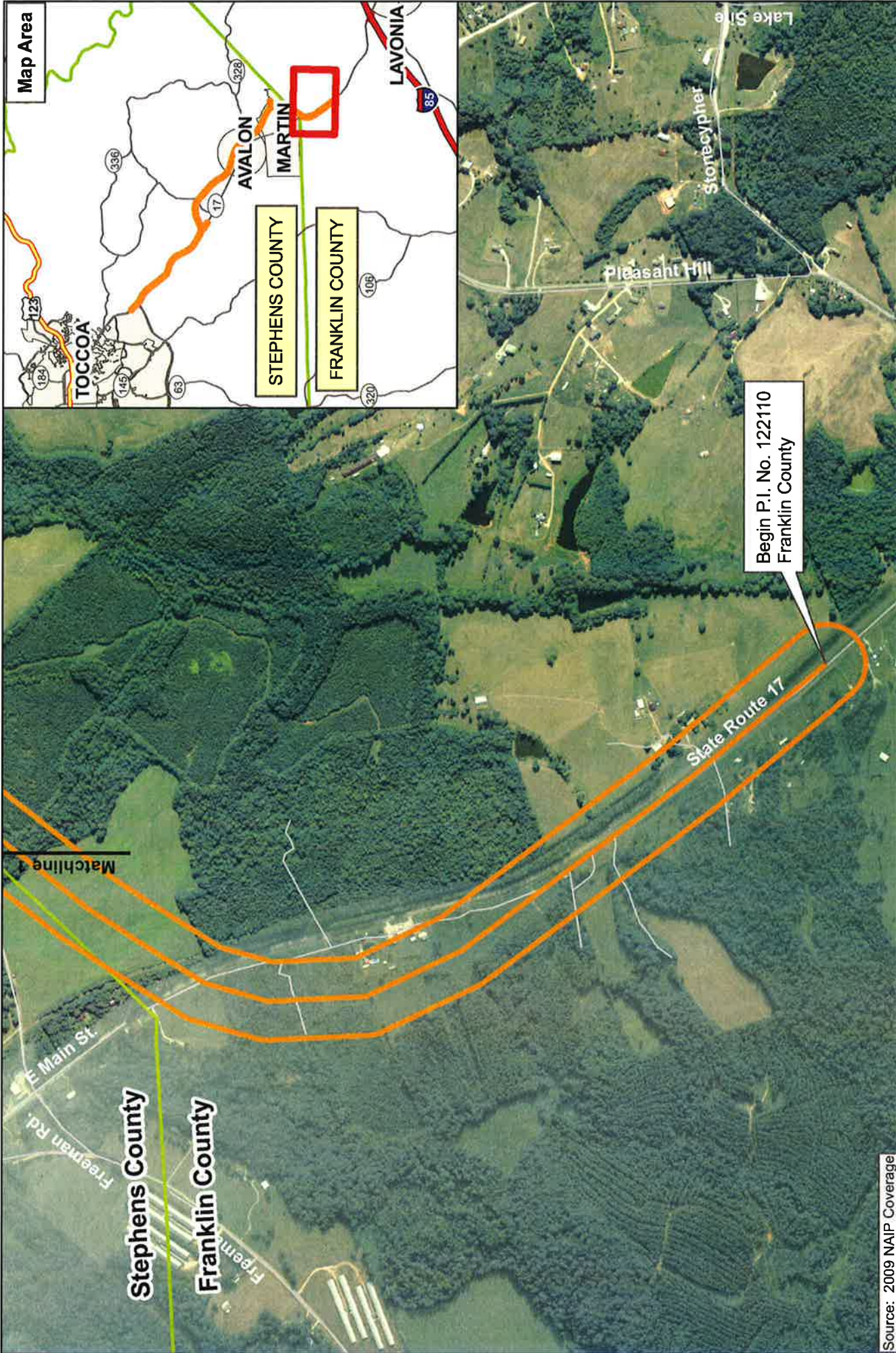
Project EDS00-545-00(37), P.I. no. 122260, in Stephens County proposes to widen the existing SR 17 from two- and three-lanes to a four-lane roadway. Beginning near Scott Road (CR 24), the project utilizes a 44-foot depressed median which transitions to a 20-foot raised median as the project approaches Toccoa. Beginning at Scott Road (CR 24), on the existing SR 17, the roadway would be widened to the east, holding the existing right-of-way on the west side, to create a 4-lane divided roadway with a 44-foot depressed median. The widening to the east continues until just north of Eastanollee Bypass (CR 195), where it would then transition to a rural divided four-lane roadway with a 20-foot raised median and begin widening to the west of the existing SR 17 alignment to avoid two historic properties. This configuration continues through Meadowbrook Drive (CR 192) while flattening the curves at Davis Road (CR 11), Whispering Pines Road (CR 6), and Moore Circle (CR 194). One thousand feet south of Fieldcrest Road (CR 191), the typical section would then change to an urban divided four-lane roadway consisting of a 20-foot raised median and outside curb and gutter and sidewalks. This alignment would flatten the curve at Fieldcrest Road (CR 191) and continue to the project terminus at Memorial Drive (CR 190). The bridge over Eastanollee Creek will be replaced and a new bridge will be constructed over Oggs Branch Creek.

Detour Locations

In order to accomplish the construction of side street intersections with the proposed SR 17 roadway, the project intends to systematically close the following roads for at least 30 days. Not all intersections will be closed at the same time; it will vary based on phasing of construction. Traffic will be detoured to nearby streets.

- Price Road
- Anderson Thomas Road (CR 31)
- Martin Drive (CR 35)
- New Road (CR 650)

- Yow Mill road (CR 16)
- Sisk Road (CR 65)
- Hayes Wilbanks Road (CR 13)
- Scott Road (CR 24)
- Old SR 17
- Old Mill Bridge Road (CR 371)
- Eastanollee Road (CR198)
- Eastanollee Bypass (CR 195)
- Davis Road (CR 11)
- Whispering Pines Road (CR 6)
- Moore Circle (CR 194)
- Clary Connector (CR 642)
- Meadowbrook Drive (CR 192)
- Fieldcrest Road (CR 191)

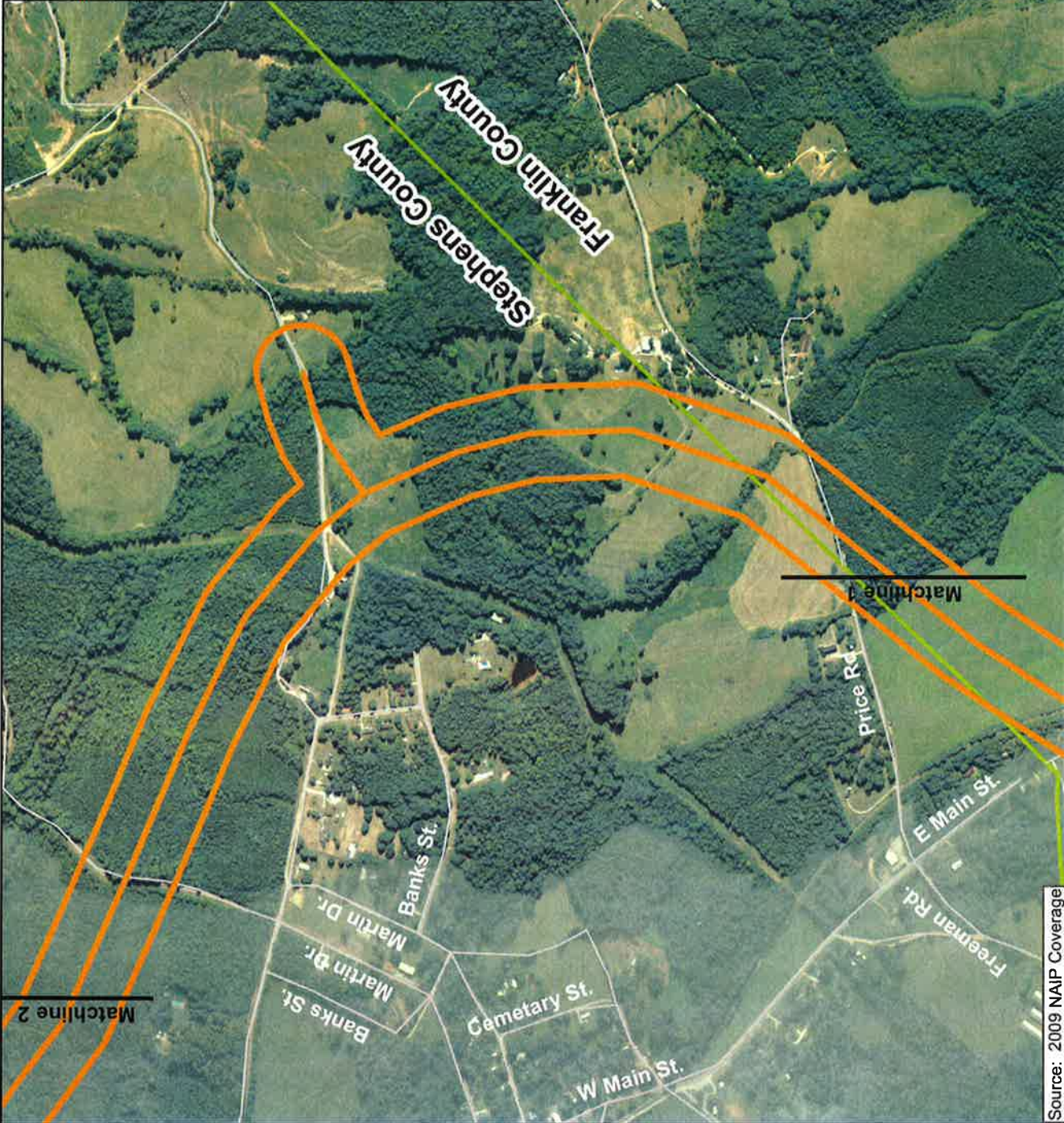
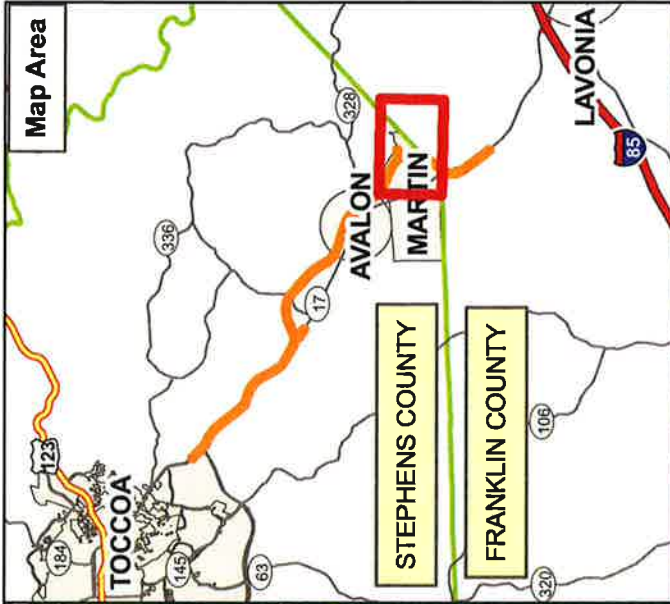


Source: 2009 NAIP Coverage

Figure 1a: Aerial Project Location Map
 State Route 17 Widening, Reconstruction, and
 Partial Relocation
 GDOT Projects EDS00-0000-545(20) and EDS00-0000-545(37)
 P.I.Nos. 122110 and 122260
 Franklin and Stephens Counties, Georgia



- Project Study Corridor
- Matchlines
- County Line

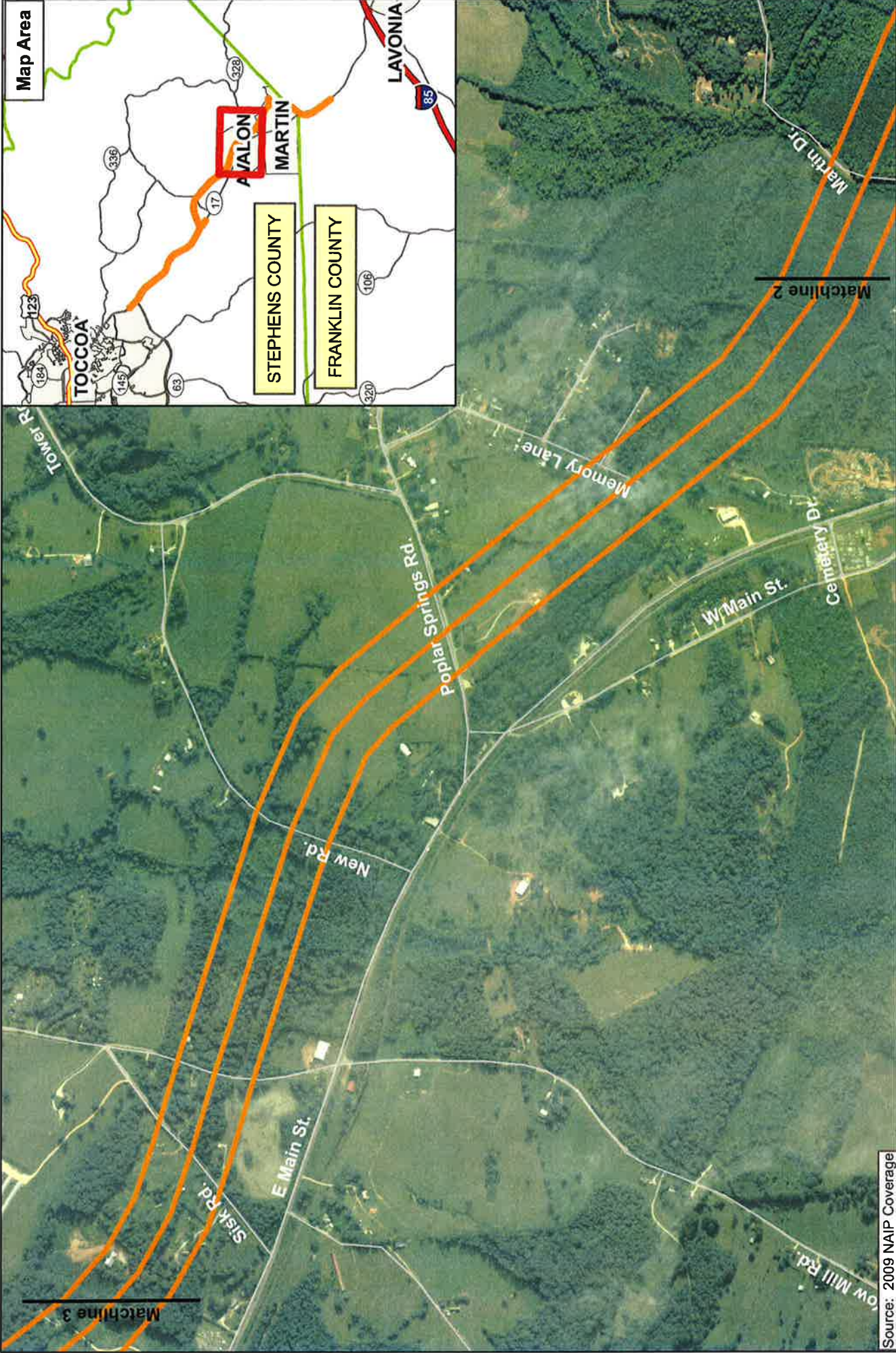


Source: 2009 NAIP Coverage

Figure 1b: Aerial Project Location Map
 State Route 17 Widening, Reconstruction, and
 Partial Relocation
 GDOT Projects EDS00-0000-545(20) and EDS00-0000-545(37)
 P.I.Nos. 122110 and 122260
 Franklin and Stephens Counties, Georgia



- Project Study Corridor
- Matchlines
- County Line

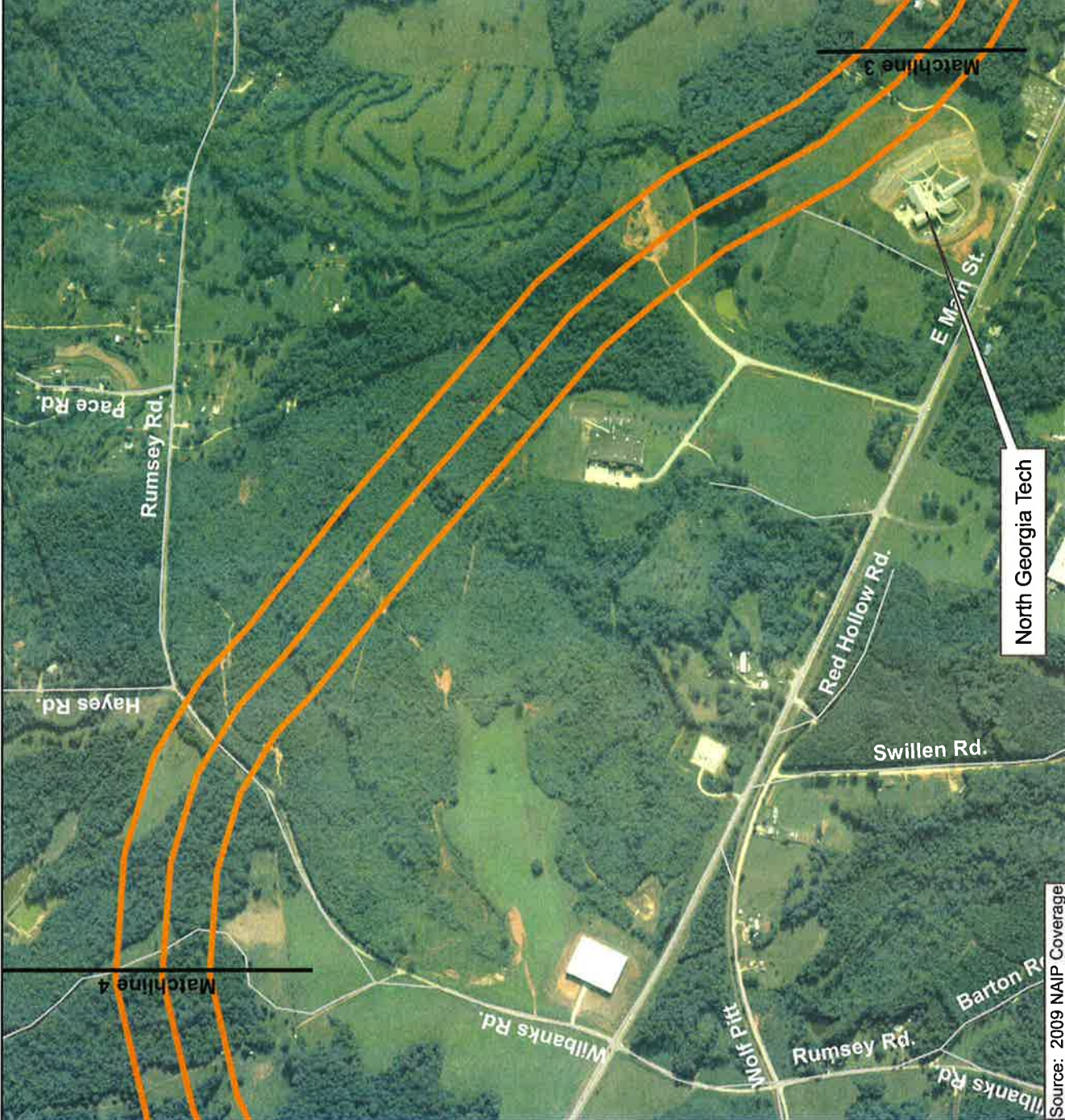
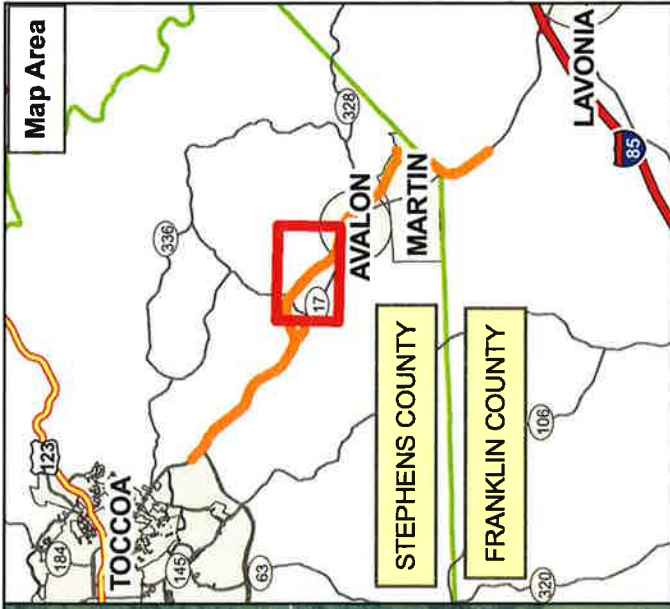


Source: 2009 NAIP Coverage

Figure 1c: Aerial Project Location Map
 State Route 17 Widening, Reconstruction, and
 Partial Relocation
 GDOT Projects EDS00-0000-545(20) and EDS00-0000-545(37)
 P.I.Nos. 122110 and 122260
 Franklin and Stephens Counties, Georgia



- Project Study Corridor
- Matchlines

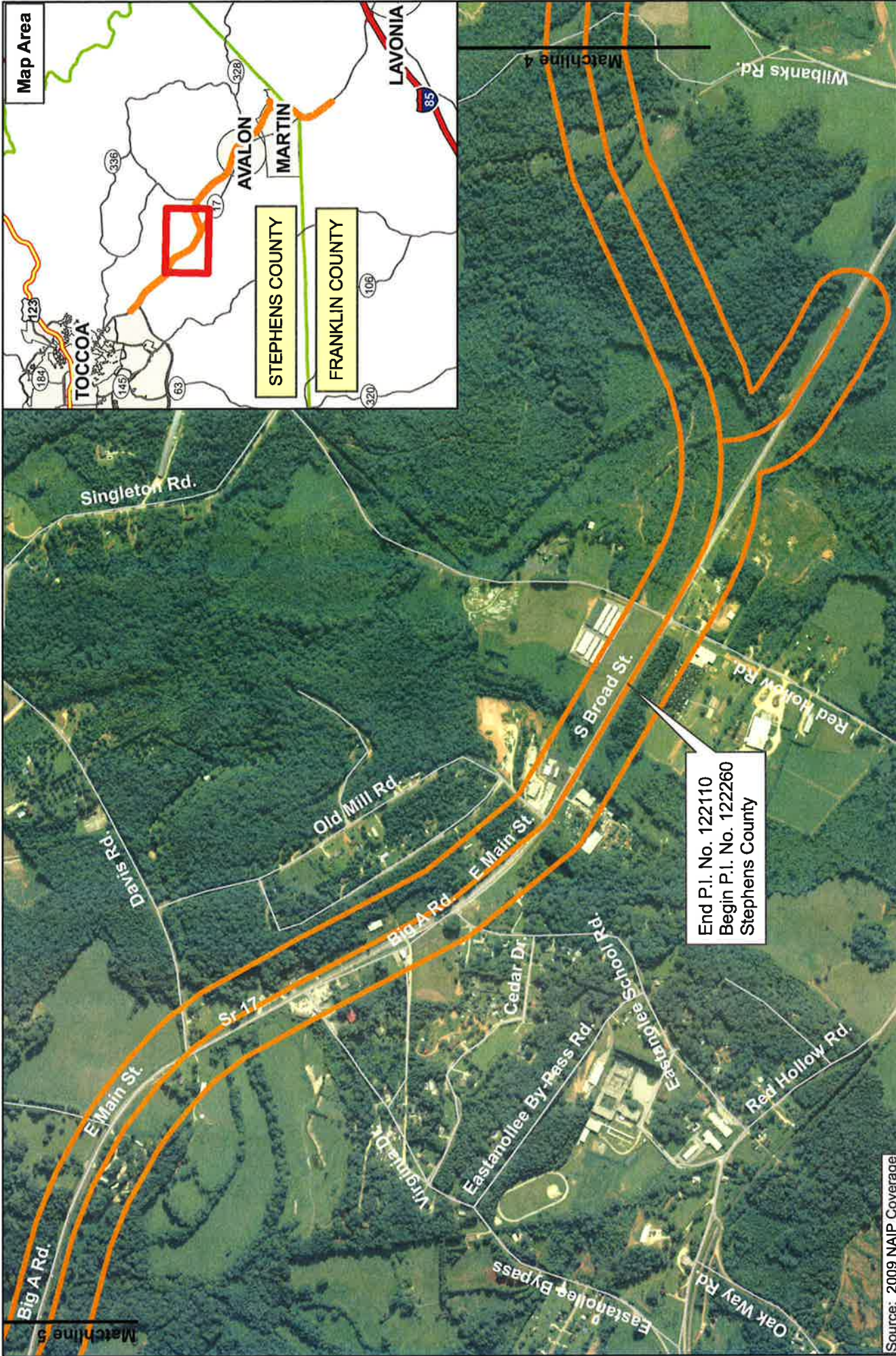


Source: 2009 NAIP Coverage

Figure 1d: Aerial Project Location Map
 State Route 17 Widening, Reconstruction, and
 Partial Relocation
 GDOT Projects EDS00-0000-545(20) and EDS00-0000-545(37)
 P.I.Nos. 122110 and 122260
 Franklin and Stephens Counties, Georgia



— Project Study Corridor
 — Matchlines

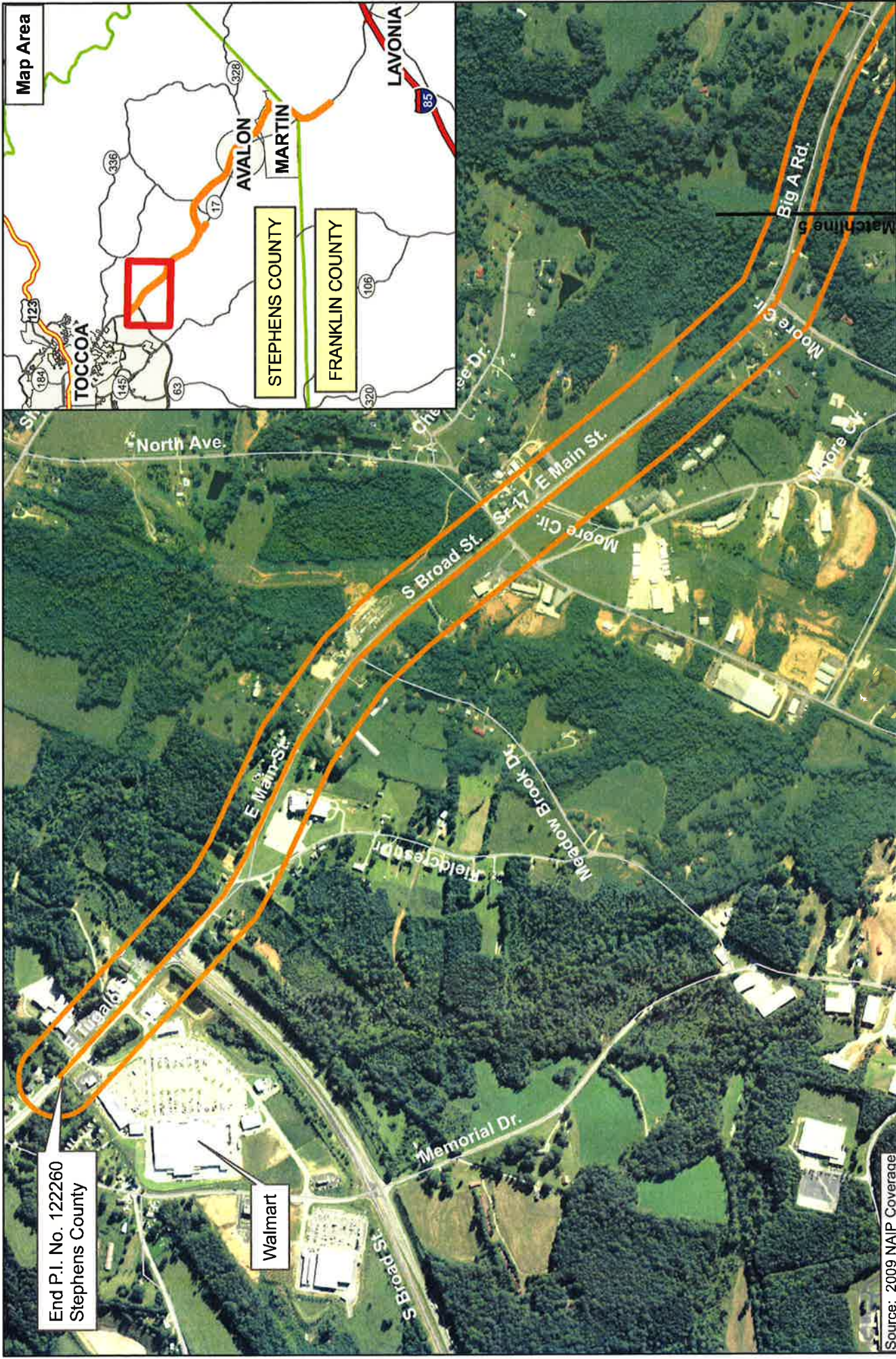


Source: 2009 NAIP Coverage

Figure 1e: Aerial Project Location Map
 State Route 17 Widening, Reconstruction, and
 Partial Relocation
 GDOT Projects EDS00-0000-545(20) and EDS00-0000-545(37)
 P.I.Nos. 122110 and 122260
 Franklin and Stephens Counties, Georgia



— Project Study Corridor
 — Matchlines

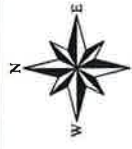


End P.I. No. 122260
Stephens County

Walmart

Source: 2009 NAIP Coverage

— Project Study Corridor
— Matchlines



0 375 750 1,500 2,250 3,000 Feet

Figure 1f: Aerial Project Location Map
State Route 17 Widening, Reconstruction, and
Partial Relocation
GDOT Projects EDS00-0000-545(20) and EDS00-0000-545(37)
P.I.Nos. 122110 and 122260
Franklin and Stephens Counties, Georgia

Georgia Department of Transportation
Public Information and Detour Open House Comment Card
P.I. Nos. 122110 and 122260, Franklin and Stephens County
July 14, 2011

Please print responses.

Name _____

Address _____

Do you support the proposed detours? *For* *Against* *Conditional* *Uncommitted*

Do you support the project? *For* *Against* *Conditional* *Uncommitted*

Comments _____

How did you hear about this meeting? *Radio* *Newspaper* *Signs* *Word of Mouth*
 Other _____

Was the location of the meeting convenient for you to attend? *Yes* *No*

If no, please suggest a general location that is more convenient to your community.

Was the time of the meeting convenient for you to attend? *Yes* *No*

If no, please suggest a time frame that is more convenient for you. _____

Were your questions answered by GDOT personnel? *Yes* *No*

Do you understand the project after attending this meeting? *Yes* *No*

Please share your suggestions on improving the way GDOT conducts public meetings.

Mail To:

Mr. Glenn Bowman, P.E., State Environmental Administrator
Georgia Department of Transportation
600 West Peachtree Street, NW – 16th Floor
Atlanta, Georgia 30308