



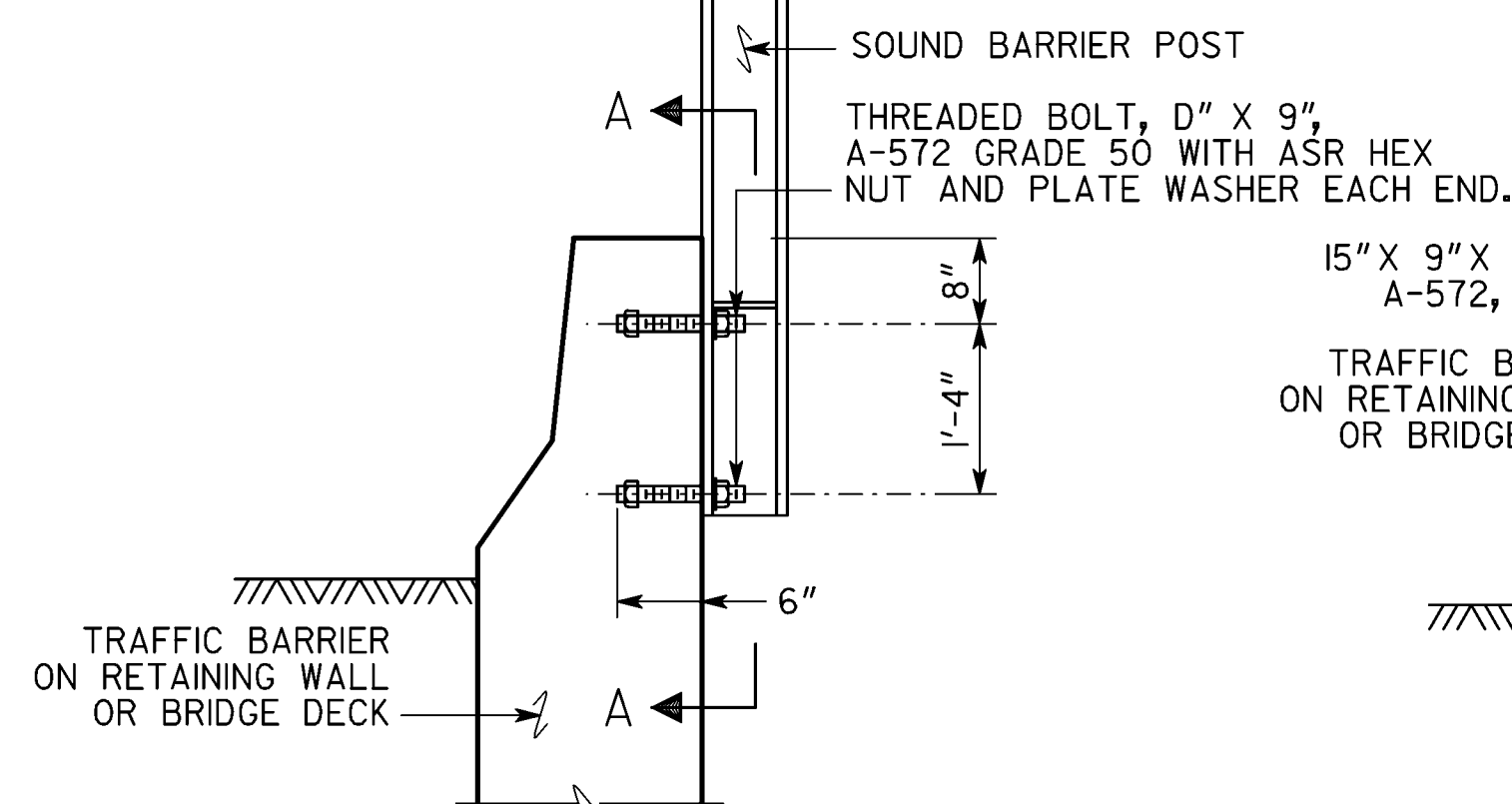
GA.

W8X24	3½"
W8X31	5½"
W10X33	5½"
W10X39	5½"
W12X40	5½"
W12X45	5½"

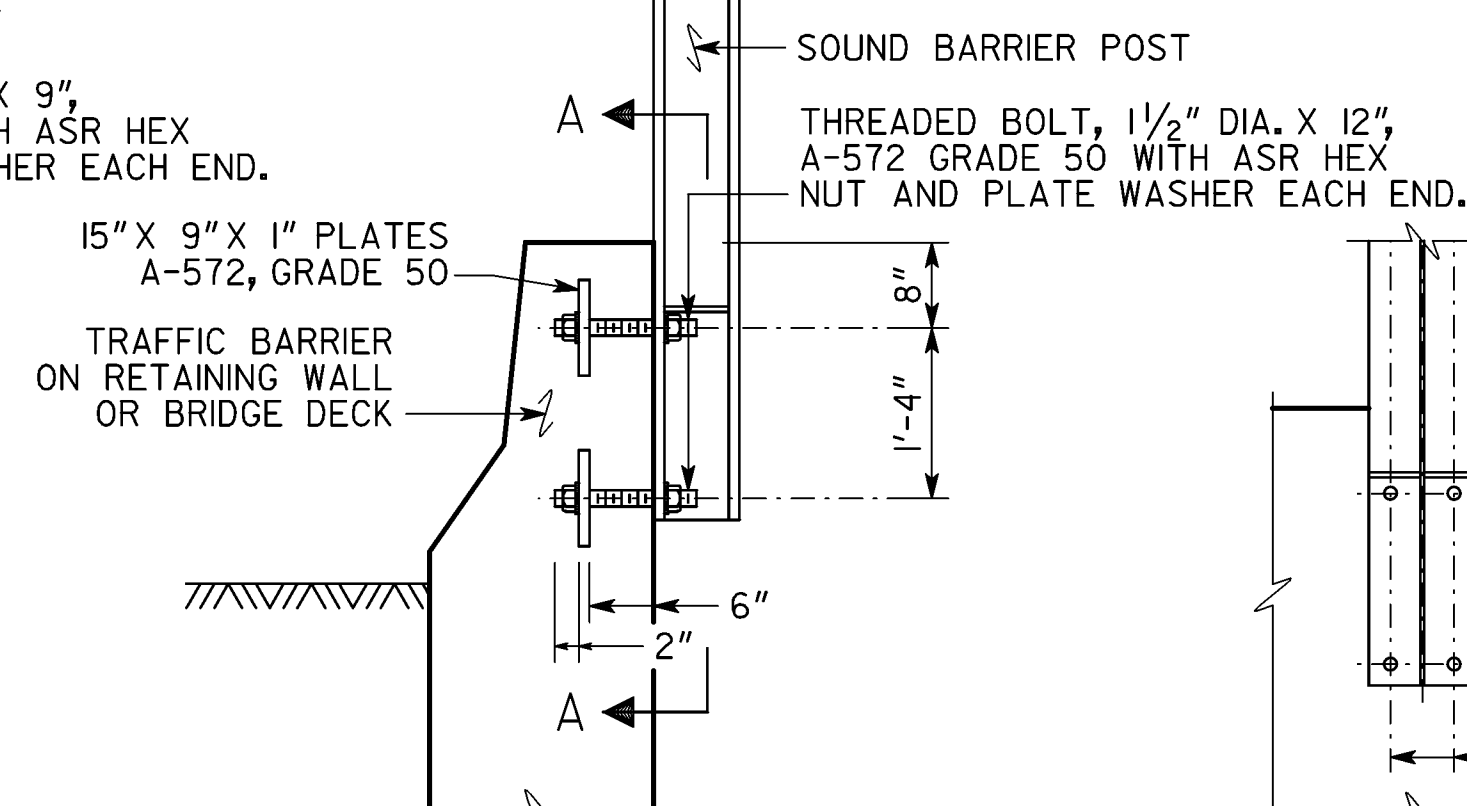
DESIGN HEIGHT "H" 	ANCHOR DIAMETER "D" 	BOLT HOLE SIZE
6'	3/8"	9/16"
8'	1/2"	11/16"
10'	5/8"	13/16"
12'	3/4"	15/16"
14'	7/8"	1 1/16"
16'	1"	1 3/16"
18'	1 1/8"	1 5/16"
18'-26'	1 1/2" W/PLATE	1 1/16"

SOUND BARRIER SHALL NOT BE MOUNTED ON
TYPE 2 SERIES SIDE BARRIERS.

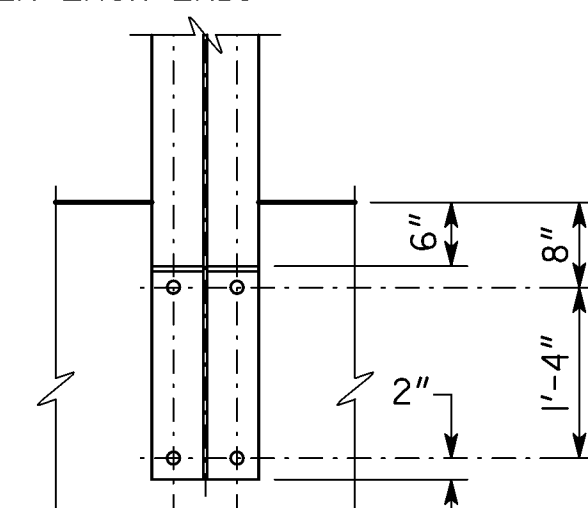
SOUND BARRIER SHALL ONLY BE ATTACHED TO BARRIERS OR RETAINING WALLS THAT HAVE BEEN SPECIFICALLY DESIGNED FOR THE LOADING FROM SOUND BARRIER.



ANCHOR DETAIL FOR SOUND
BARRIER BETWEEN 6'-0" AND 18'-0"



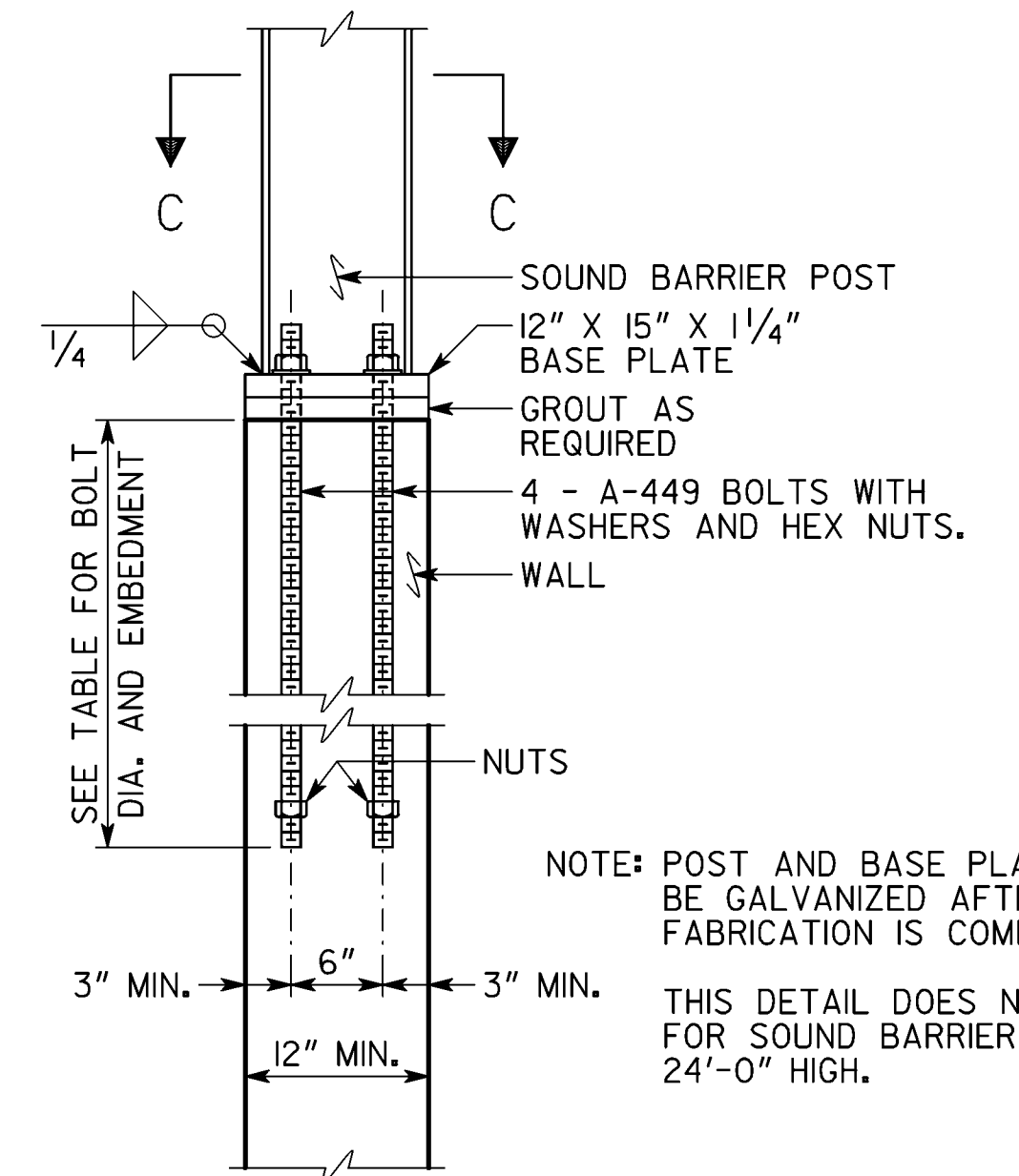
ANCHOR DETAIL FOR SOUND
BARRIER BETWEEN 18'-0" AND 26'-0"



SECTION A-A

POST SIZE	PANEL SUPPORT PLATE SIZE *
W8X24,31	4" x 7 $\frac{1}{8}$ " x 1 $\frac{1}{2}$ "
W10X22	4" x 9 $\frac{3}{8}$ " x 1 $\frac{1}{2}$ "
W10X26	4" x 9 $\frac{1}{2}$ " x 1 $\frac{1}{2}$ "
W10X33,39	4" x 8 $\frac{7}{8}$ " x 1 $\frac{1}{2}$ "
W12X26	4" x 11 $\frac{1}{2}$ " x 1 $\frac{1}{2}$ "
W12X40	4" x 11" x 1 $\frac{1}{2}$ "
W12X45	4" x 10 $\frac{7}{8}$ " x 1 $\frac{1}{2}$ "
W14X30,34,38	4" x 13 $\frac{1}{8}$ " x 1 $\frac{1}{2}$ "
W14X43	4" x 12 $\frac{5}{8}$ " x 1 $\frac{1}{2}$ "
W14X48,53	4" x 12 $\frac{1}{2}$ " x 1 $\frac{1}{2}$ "
W14X61	4 $\frac{7}{8}$ " x 12 $\frac{5}{8}$ " x 1 $\frac{1}{2}$ "
W14X74,82	4 $\frac{7}{8}$ " x 12 $\frac{1}{2}$ " x 1 $\frac{1}{2}$ "
W14X90,109	7" x 12 $\frac{5}{8}$ " x 1 $\frac{1}{2}$ "

* REQUIRED FOR BARRIER MOUNTED SOUND BARRIER ONLY. OPTIONAL FOR GROUND MOUNTED SOUND BARRIER.

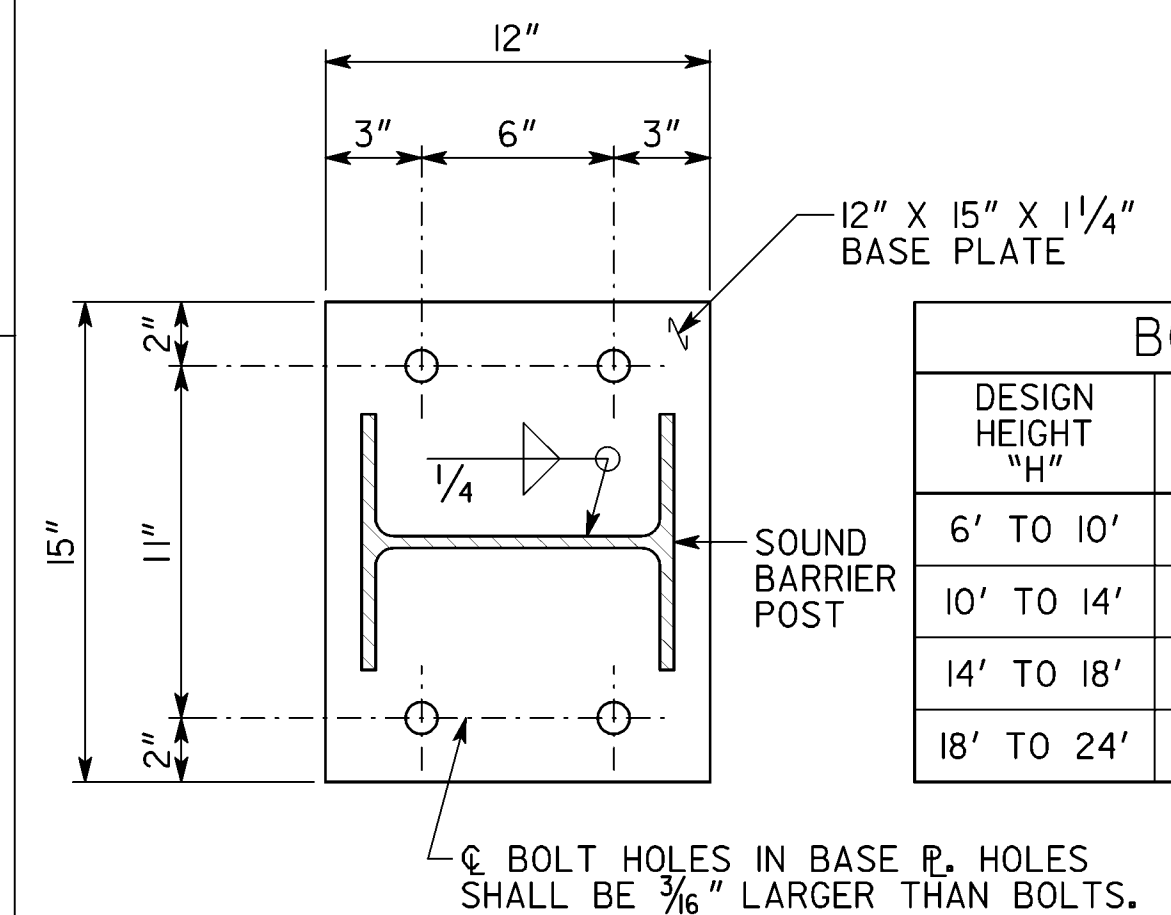


NOTE: POST AND BASE PLATE SHALL
BE GALVANIZED AFTER ALL
FABRICATION IS COMPLETE.

THIS DETAIL DOES NOT APPLY
FOR SOUND BARRIERS OVER
24'-0" HIGH.

DETAILS FOR WALL MOUNTED SOUND BARRIER

10 FOOT POST SPACING

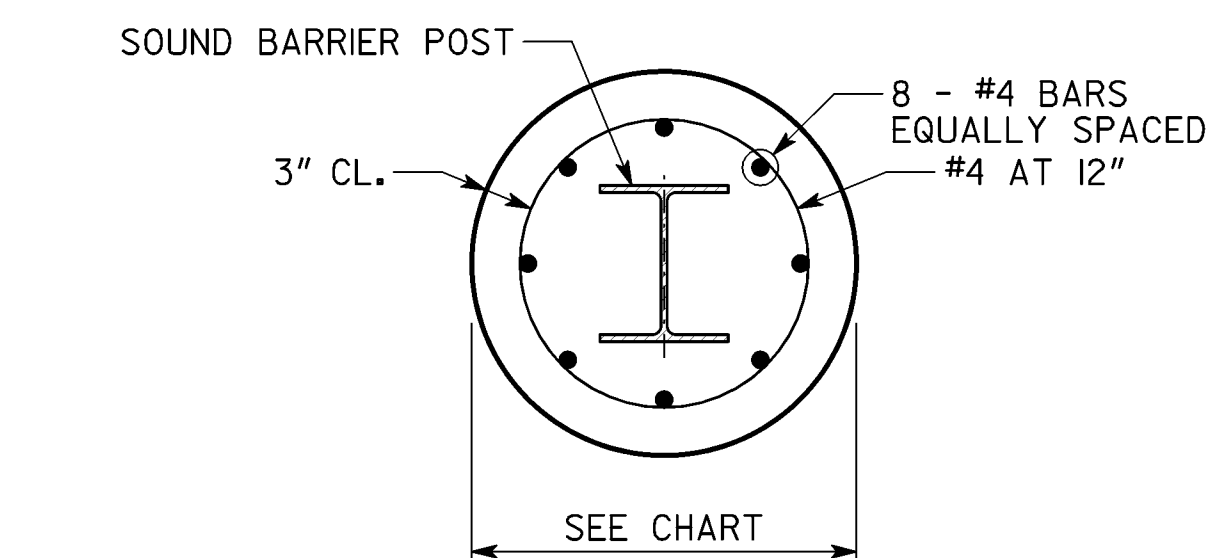


SECTION C - C

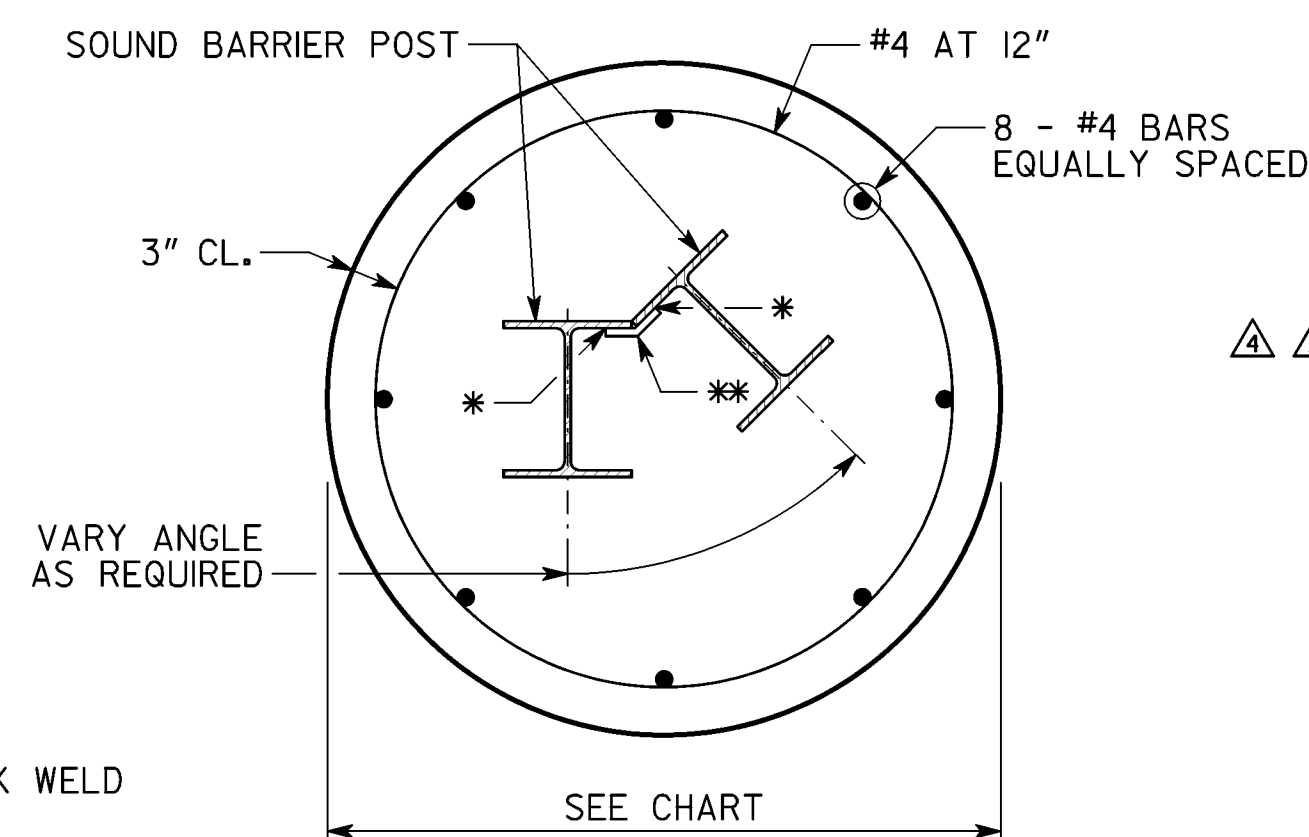
SCALE: 2" = 1'-0"

DETAILS FOR WALL MOUNTED SOUND BARRIER

10 FOOT POST SPACING

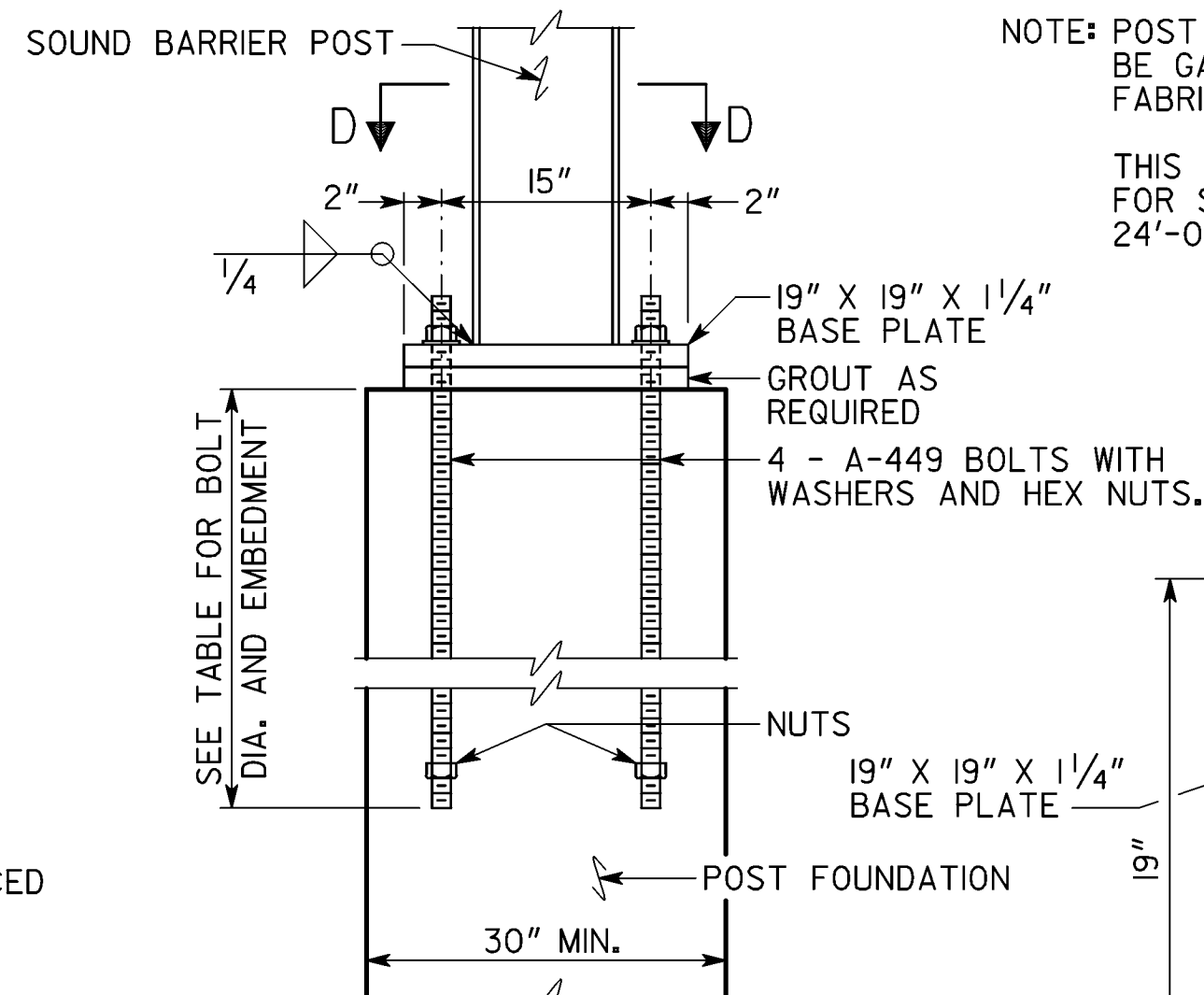


7 TYPICAL POST BASE DETAIL



CORNER POST BASE DETAIL

DETAILS FOR GROUND MOUNTED SOUND BARRIER



DETAIL FOR ALTERNATE POST TO
FOUNDATION CONNECTION DETAIL
10, 15 AND 20 FOOT POST SPACING

△ POST BOLTED TO DRILLED SHAFT		
HEIGHT	BOLT Ø	EMBED
6' TO 12'	¾"	2'-0"
12' TO 16'	1"	3'-0"
16' TO 20'	1¼"	4'-6"
20' TO 24'	1½"	6'-0"

NOTE: POST AND BASE PLATE SHALL
BE GALVANIZED AFTER ALL
FABRICATION IS COMPLETE.

THIS DETAIL DOES NOT APPLY
FOR SOUND BARRIERS OVER
24'-0" HIGH.

☐ C BOLT HOLES IN BASE PL. HOLES SHALL BE $\frac{3}{16}$ " LARGER THAN BOLTS.

SECTION D-D
SCALE: 2" = 1'-0"

[illegible]