

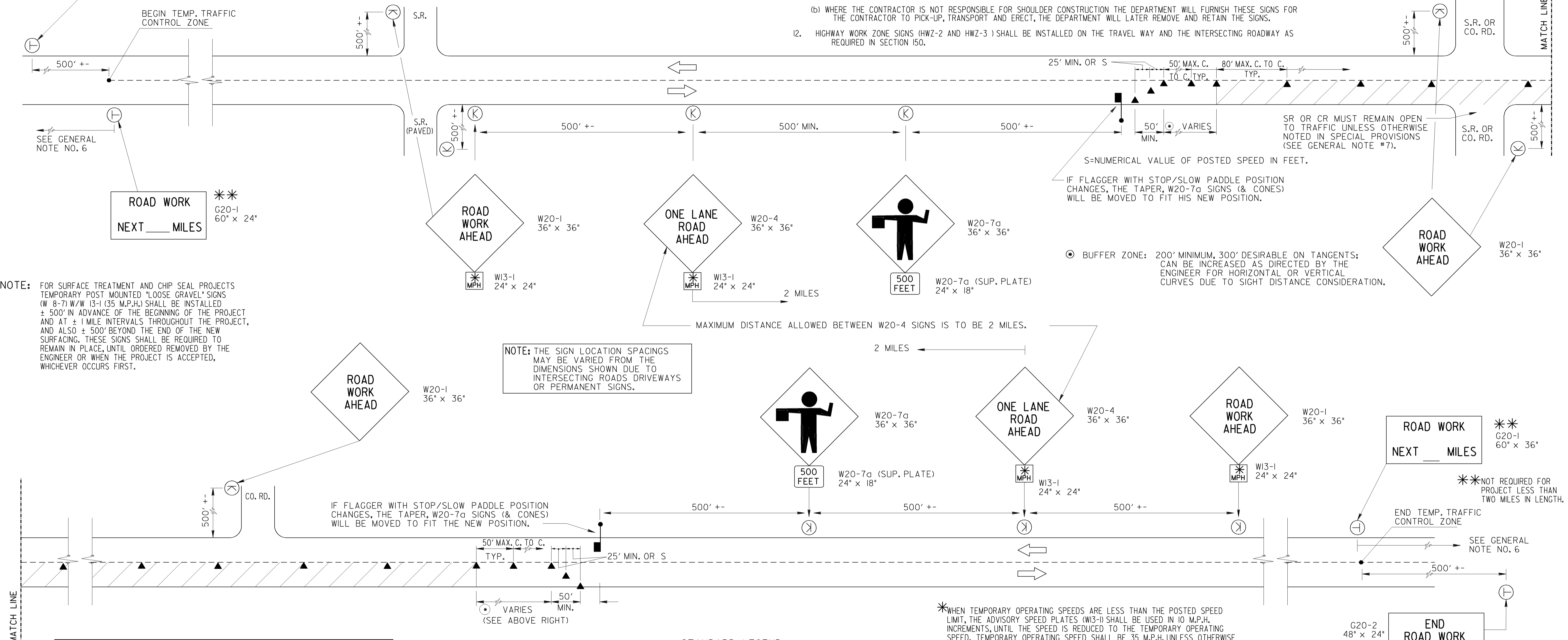
STATE	PROJECT NUMBER	SHEET NO.	TOTAL SHEETS
GA.			

GENERAL NOTES:

- ALL TRAFFIC CONTROL DEVICES SHALL BE MADE AND ERECTED IN ACCORDANCE WITH THE DETAILS SHOWN ON THE PLANS; THE MUTCD; THE GEORGIA STANDARD SPECIFICATIONS, AND/OR SPECIAL PROVISIONS. (SEE SECTION 150)
- ALL TRAFFIC CONTROL DEVICES SHALL BE AS SHOWN, OR AS DIRECTED BY THE ENGINEER. ADDITIONAL DEVICES MAY BE REQUIRED AS DIRECTED BY THE ENGINEER.
- ALL PORTABLE SIGNS SHALL BE MOUNTED A MINIMUM OF 1 FOOT ABOVE THE LEVEL OF PAVEMENT EDGE FOR DIRECTIONAL TRAFFIC OF TWO (2) LANES OR LESS AND A MINIMUM OF 7 FEET FOR DIRECTIONAL OF THREE (3) OR MORE LANES. ALL PORTABLE SIGNS AND SIGN MOUNTING DEVICES UTILIZED IN THE WORK SHALL BE NCHRP 350 COMPLIANT. PORTABLE SIGNS MAY BE USED WHEN THE DURATION OF THE WORK IS LESS THAN 3 DAYS.
- WHEN THE CONSTRUCTION AREA HAS ENTRANCE/EXIT RAMP OR INTERSECTIONS, WORK WILL BE PERFORMED IN SUCH A MANNER TO PERMIT TRAFFIC TO OPERATE WITH THE LEAST AMOUNT OF INCONVENIENCE AS POSSIBLE. ADDITIONAL CHANNELIZATION AND SIGNING SHALL BE INSTALLED, AS REQUIRED, TO ALLOW TRAFFIC TO REMAIN AS OPERATIONAL AS POSSIBLE. WHEN ENTRANCE RAMP/INTERSECTIONS ARE INOPERABLE, FLAGGERS WILL BE UTILIZED TO CONTROL AND PROHIBIT MOVEMENT INTO THE PROJECT AT THAT POINT UNTIL CONSTRUCTION HAS CLEARED THE RESTRICTION SUFFICIENT TO RETURN TO OPERATIONAL STATUS.

- FOR NIGHT TIME OPERATIONS, DRUMS SHALL HAVE, FOR THE LENGTH OF THE TAPER ONLY, A SIX (6) INCH ORANGE REFLECTORIZED TOP STRIPE ON EACH DRUM IN THE TAPER AS REQUIRED IN SECTION 150. SPACING OF DEVICES SHALL BE AS SHOWN. DURING DAYLIGHT HOURS, CONES (28" MIN.) MAY BE USED IN ADVANCE OF AND THROUGHOUT WORK AREA.
- SIGNS SHOWN HERE ARE IN ADDITION TO ALL ADVANCE WARNING SIGNS REQUIRED IN SECTION 150.
- FLAGGERS SHALL BE PROVIDED AS NECESSARY TO PROHIBIT WRONG DIRECTION OF TRAFFIC THRU WORK AREAS.
- WHEN NOT IN USE, PORTABLE SIGNS SHALL BE REMOVED FROM THE TRAVELWAY SO THAT THE MESSAGE IS NOT VISIBLE TO THE MOTORIST. INTERIM SIGNS THAT ARE PERMANENT MOUNTED SHALL BE COVERED WHEN NOT APPLICABLE. SEE SECTION 150.
- PAYMENT FOR TRAFFIC CONTROL SHALL BE PER SECTION 150.
- PAVEMENT MARKINGS FOR TEMPORARY TRAFFIC CONTROL, IF REQUIRED, SHALL BE IN ACCORDANCE WITH SECTION 150 AND AS DIRECTED BY THE ENGINEER OR SHOWN IN THE PLANS.
- (a) ON PROJECTS WITH LOW OR SOFT SHOULDERS, THE CONTRACTOR SHALL ERECT IMMEDIATELY AHEAD OF CONSTRUCTION OPERATIONS "LOW/SOFT SHOULDER" WARNING SIGNS AT THE PROJECT TERMINI, AT INTERVALS NOT TO EXCEED ONE MILE AND IMMEDIATELY PAST EACH CROSSROAD.
- (b) WHERE THE CONTRACTOR IS NOT RESPONSIBLE FOR SHOULDER CONSTRUCTION THE DEPARTMENT WILL FURNISH THESE SIGNS FOR THE CONTRACTOR TO PICK-UP, TRANSPORT AND ERECT, THE DEPARTMENT WILL LATER REMOVE AND RETAIN THE SIGNS.
- HIGHWAY WORK ZONE SIGNS (HWZ-2 AND HWZ-3) SHALL BE INSTALLED ON THE TRAVEL WAY AND THE INTERSECTING ROADWAY AS REQUIRED IN SECTION 150.

G20-2
48" x 24"
END ROAD WORK

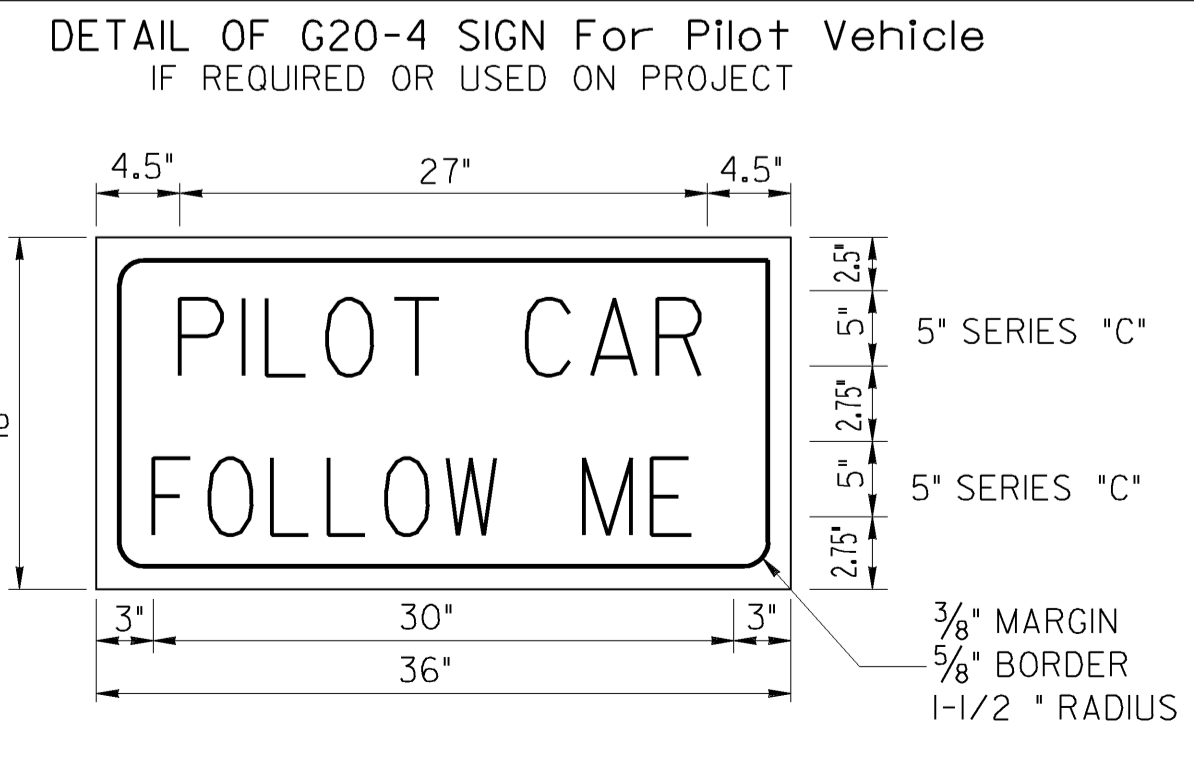


NOTE: FOR SURFACE TREATMENT AND CHIP SEAL PROJECTS TEMPORARY POST MOUNTED "LOOSE GRAVEL" SIGNS (W 8-7) W/W 13-1 (35 M.P.H.) SHALL BE INSTALLED ± 500' IN ADVANCE OF THE BEGINNING OF THE PROJECT AND AT ± 1 MILE INTERVALS THROUGHOUT THE PROJECT, AND ALSO ± 500' BEYOND THE END OF THE NEW SURFACING. THESE SIGNS SHALL BE REQUIRED TO REMAIN IN PLACE, UNTIL ORDERED REMOVED BY THE ENGINEER OR WHEN THE PROJECT IS ACCEPTED, WHICHEVER OCCURS FIRST.

NOTE: THE SIGN LOCATION SPACINGS MAY BE VARIED FROM THE DIMENSIONS SHOWN DUE TO INTERSECTING ROADS DRIVEWAYS OR PERMANENT SIGNS.

⊙ BUFFER ZONE: 200' MINIMUM, 300' DESIRABLE ON TANGENTS; CAN BE INCREASED AS DIRECTED BY THE ENGINEER FOR HORIZONTAL OR VERTICAL CURVES DUE TO SIGHT DISTANCE CONSIDERATION.

*WHEN TEMPORARY OPERATING SPEEDS ARE LESS THAN THE POSTED SPEED LIMIT, THE ADVISORY SPEED PLATES (W13-1) SHALL BE USED IN 10 M.P.H. INCREMENTS, UNTIL THE SPEED IS REDUCED TO THE TEMPORARY OPERATING SPEED. TEMPORARY OPERATING SPEED SHALL BE 35 M.P.H. UNLESS OTHERWISE DETERMINED BY THE ENGINEER.



STANDARD LEGEND

- STRIPED DRUM
- ┆ PERMANENT TYPE POST MOUNTED SIGN (7' MOUNT HEIGHT)
- ⊕ TEMPORARY POST MOUNTED SIGN - (7' MOUNT HEIGHT)
- Ⓚ PORTABLE MOUNTED SIGN - MINIMUM HEIGHT OF 1 FT. ABOVE THE EDGE OF PAVEMENT; INSTALLED AS PER NCHRP 350 TESTING REQUIREMENTS.
- ▨ WORK AREA
- ▲ TRAFFIC CONE - 28" MIN. - DAYTIME USE ONLY
- FLAGGER WITH STOP-SLOW PADDLE

REMOVED FLAGS AND REV. 3-30-06		DATE	
GENERAL NOTES REV. SIGN G20-2A TO G20-2.		REVISION	
DEPARTMENT OF TRANSPORTATION STATE OF GEORGIA STANDARD TRAFFIC CONTROL DETAIL FOR LANE CLOSURE ON TWO-LANE HIGHWAY			
NO SCALE		REV. & REDR. JULY, 1999	
DES. _____	(SUBMITTED) <i>[Signature]</i>	NUMBER 9102	
DRW. _____	STATE ROAD & AIRPORT DESIGN ENGINEER		
TRA. _____	(APPROVED) <i>[Signature]</i>		
CHK. _____	CHIEF ENGINEER		