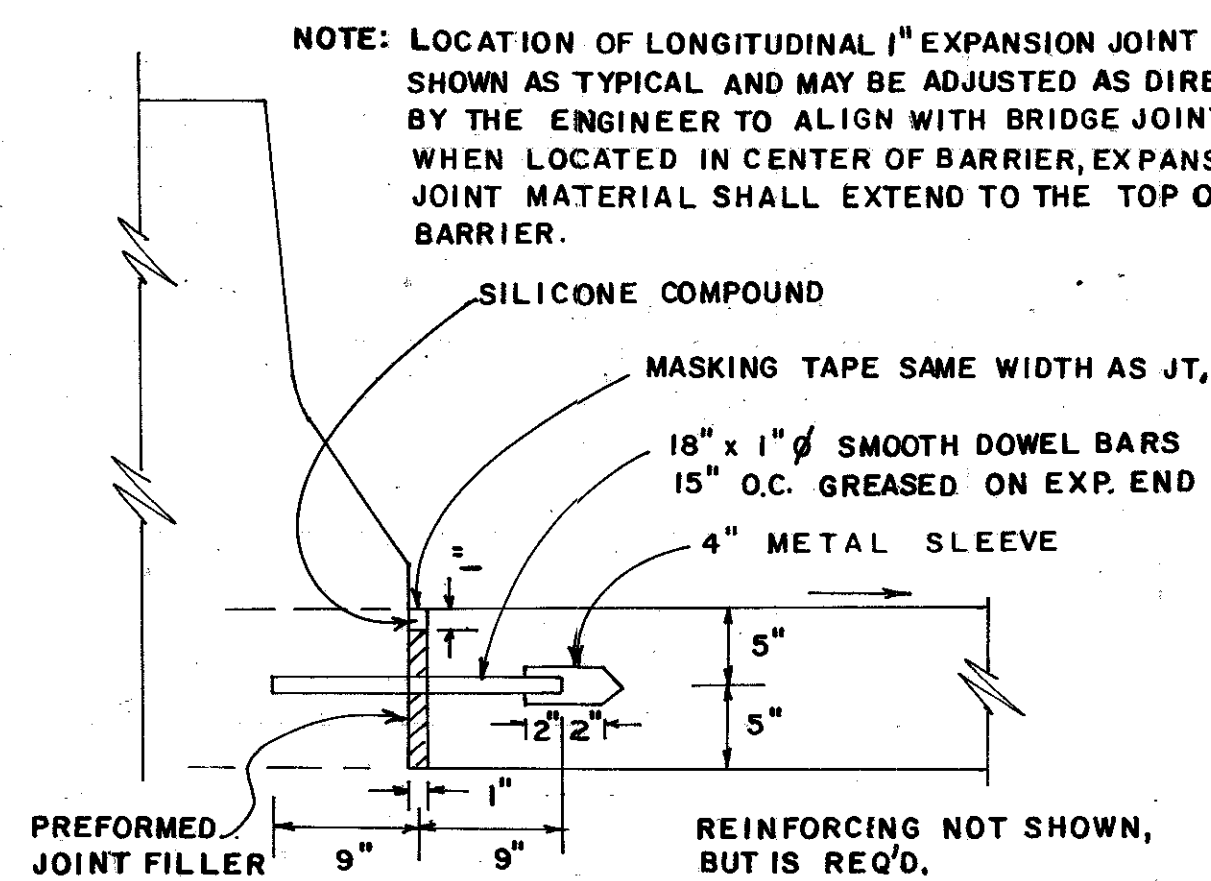


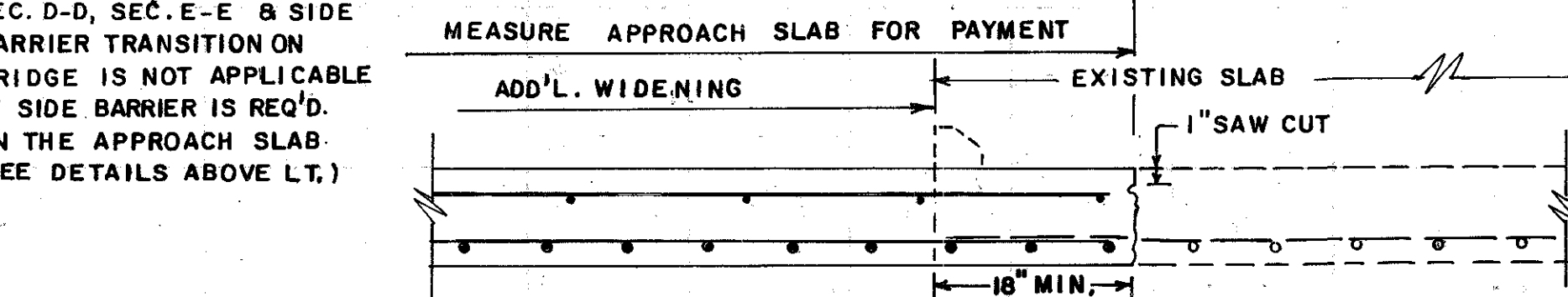
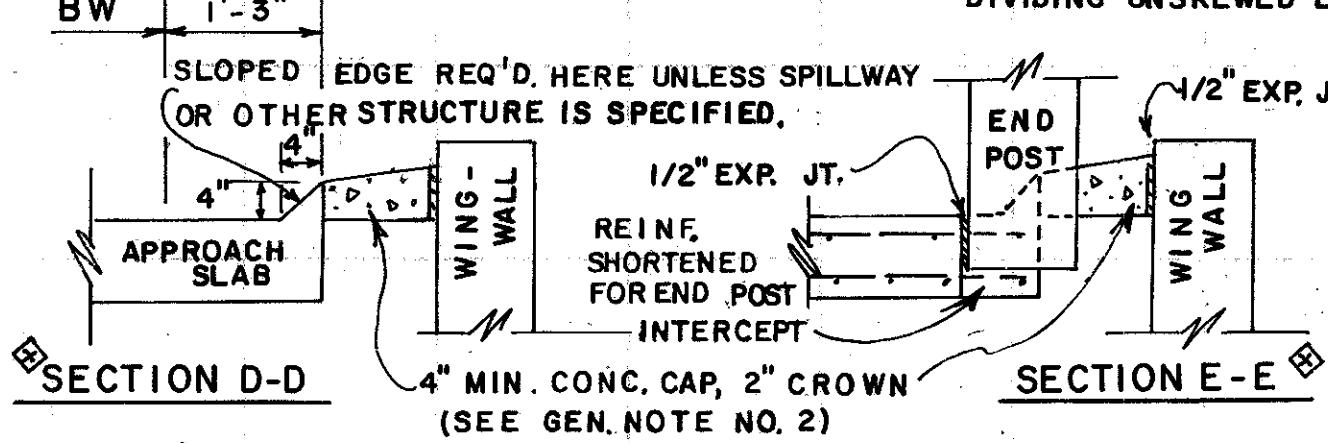
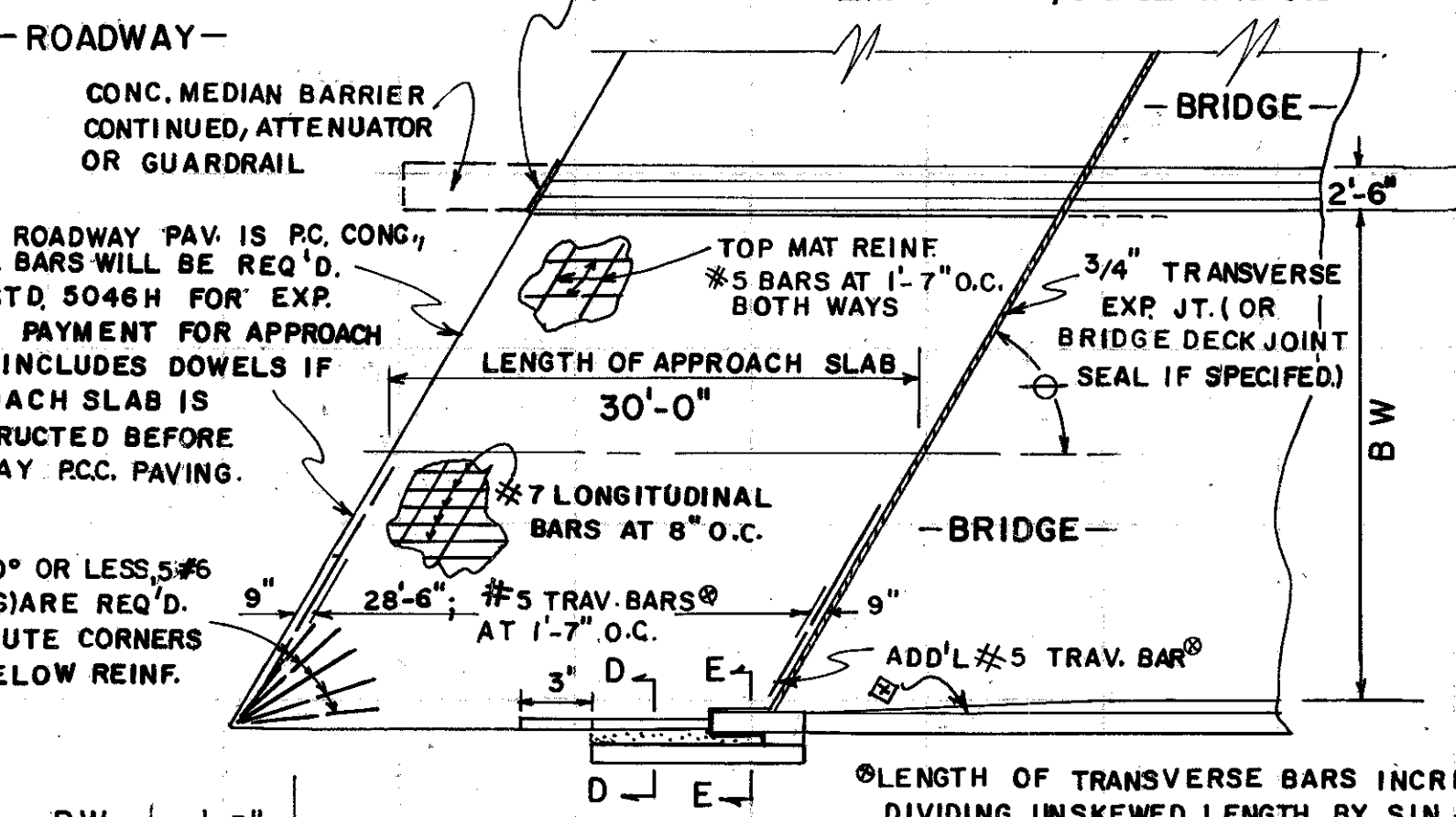
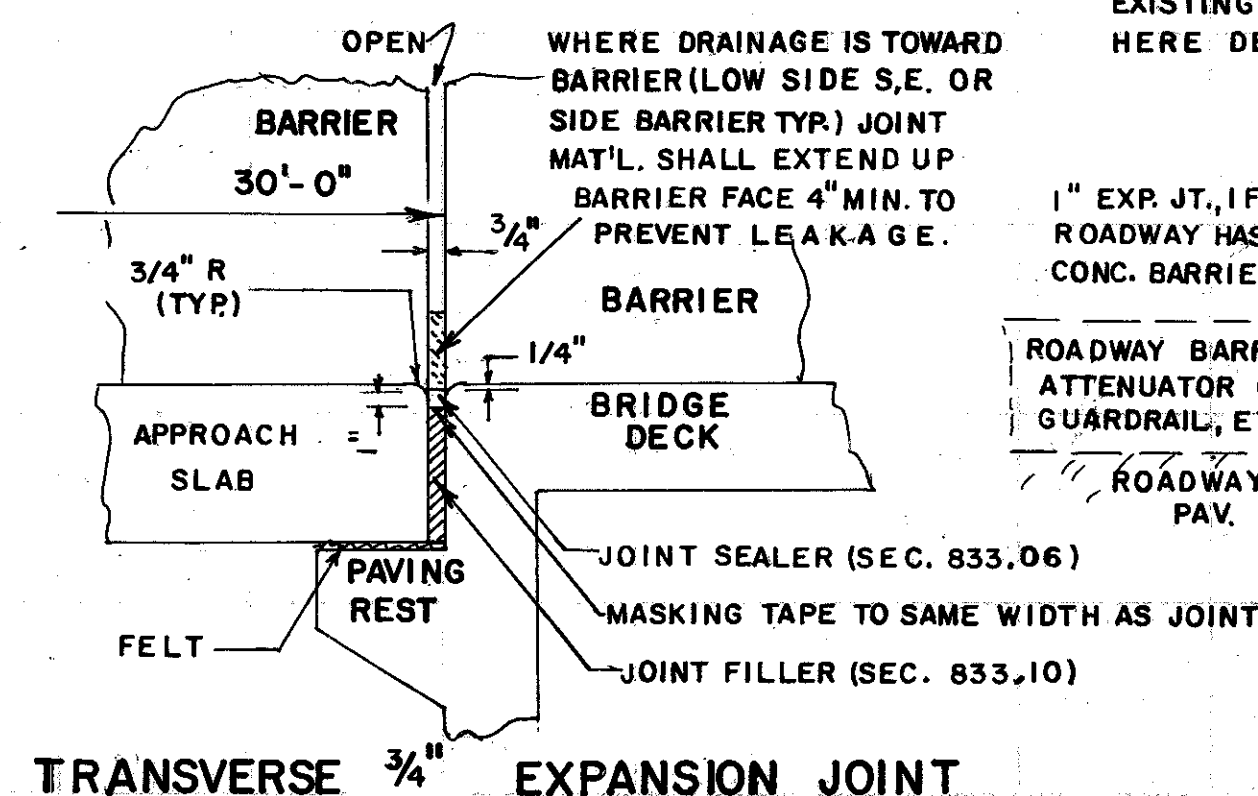
NOTE: WHERE GUARDRAIL IS REQ'D., SEE STANDARD 4270 FOR SPECIAL  
END SHOE ATTACHMENT. REDUCED POST SPACINGS SHALL  
BE REQUIRED, SEE STD. 4012C OR OTHER APPLICABLE DETAIL.  
PAYMENT: FOR APPROACH SLAB INCLUDES BARRIER TRANSITION  
WITH FIVE (5) HOLES PROPERLY LOCATED WHERE GUARDRAIL  
IS REQUIRED. PAYMENT FOR GUARDRAIL INCLUDES SPECIAL END  
SHOE, GUARDRAIL, POSTS, ETC.



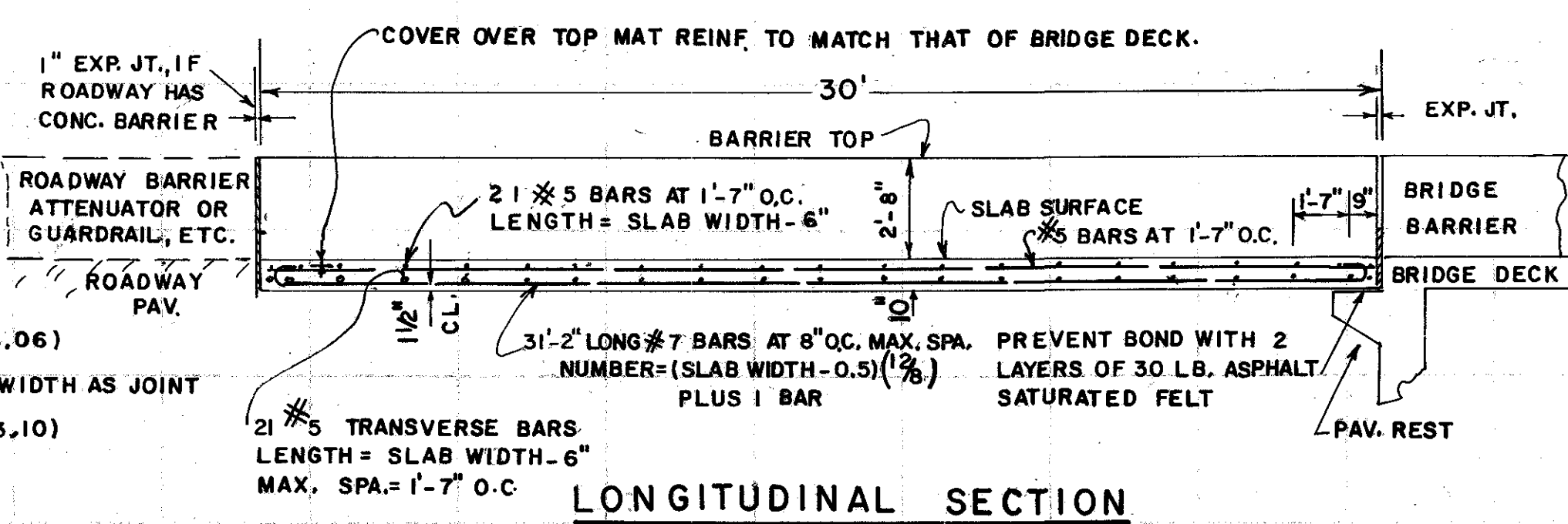
NOTES FOR JOINTS.

A. ALL APPROACH SLABS EXCEEDING 42' IN WIDTH WILL CONTAIN A LONGITUDINAL CONSTRUCTION JOINT. APPROACH SLABS EXCEEDING 60' AND 90' IN WIDTH SHALL CONTAIN 2 AND 3 LONGITUDINAL CONSTRUCTION JOINTS RESPECTIVELY. LONGITUDINAL EXPANSION JOINT SHALL BE REQUIRED IF APPROACH SLAB IS OVER 100 FT. IN WIDTH— OR WHERE BRIDGE HAS A LONGITUDINAL EXPANSION JOINT, THE APPROACH SLAB EXPANSION JOINT SHALL BE ALIGNED TO MATCH. SECTIONS BETWEEN JOINTS OR BETWEEN THE SLAB EDGE AND A JOINT SHALL NOT BE LESS THAN 12' OR MORE THAN 30' WIDE. JOINTS SHALL BE LOCATED AT LANE LINES TO PROVIDE OFFSET FROM WHEEL PATHS. APPROACH SLABS WITH LONGITUDINAL CONSTRUCTION JOINTS SHALL BE MADE WITH MORE THAN ONE POUR. REINFORCING STEEL SHALL EXTEND THRU CONSTRUCTION JOINT UNCHANGED, BUT NOT THRU EXPANSION JOINT.

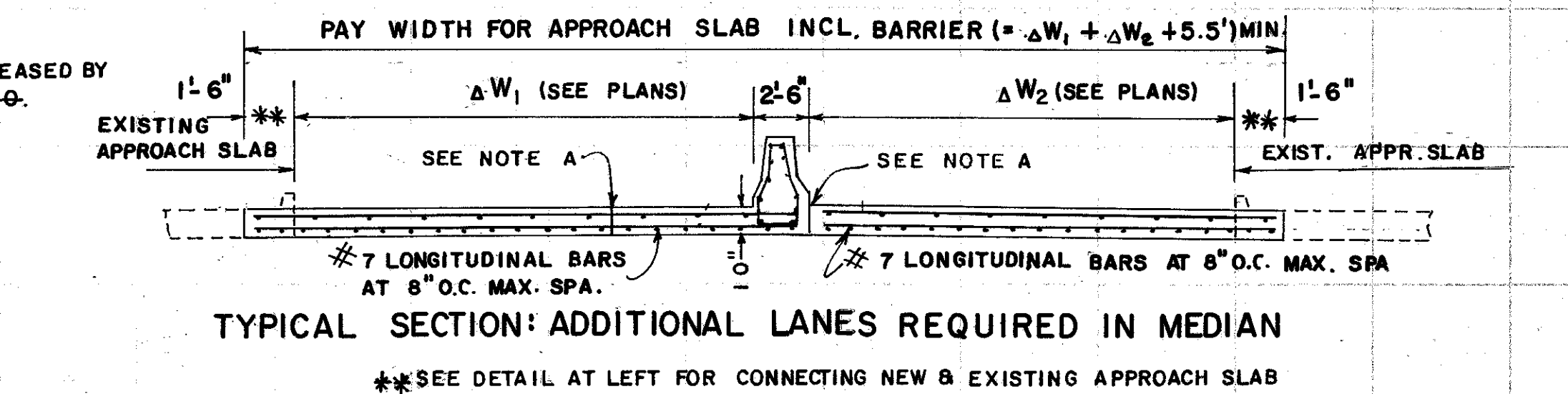
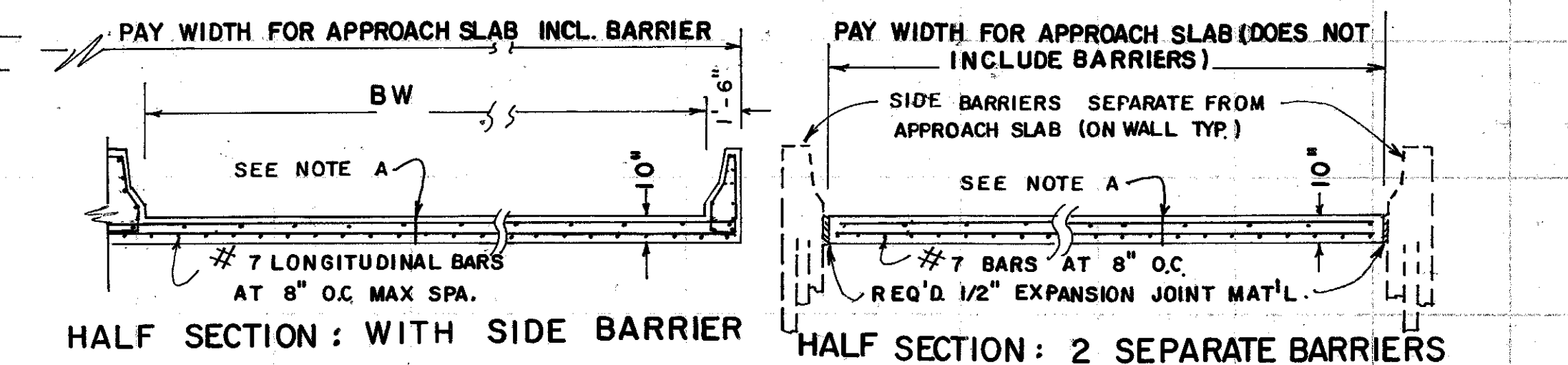
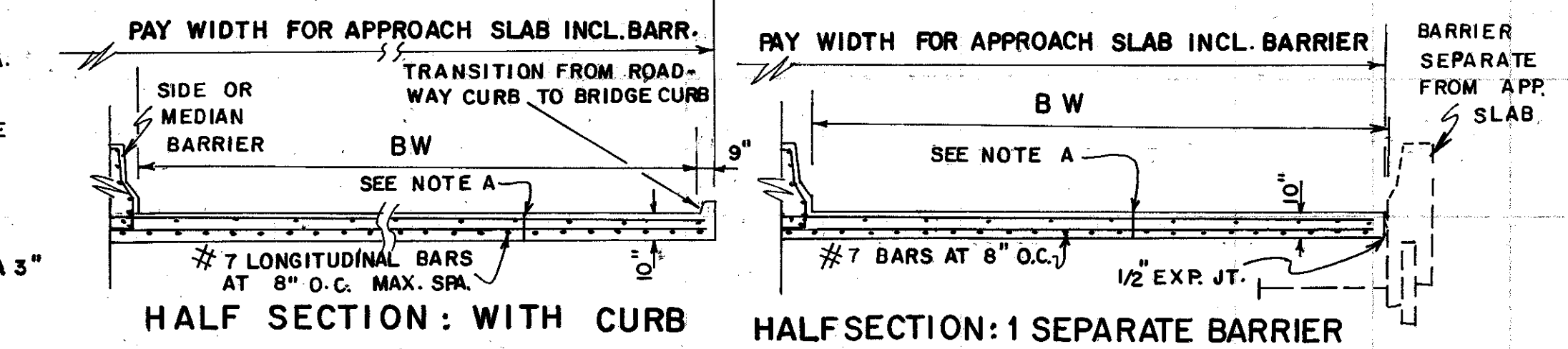
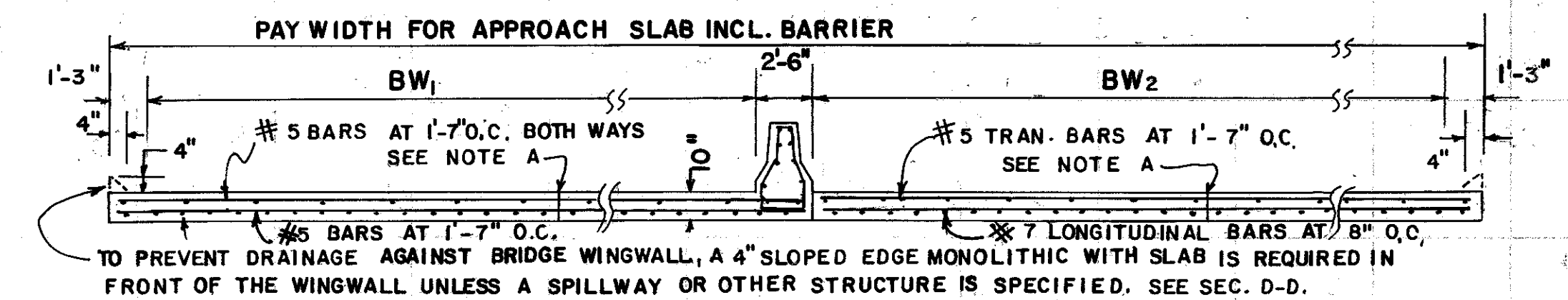
**B. TRANSVERSE JOINT BETWEEN APPROACH SLAB AND BRIDGE SHALL BE AN  $\frac{3}{4}$ " EXPANSION JOINT AS SHOWN . UNLESS SPECIFIED OTHERWISE, SEE SEPARATE SHEET WHERE BRIDGE DECK JOINT SEAL IS SPECIFIED, IF BRIDGE DECK JOINT SEAL IS USED BETWEEN THE APPROACH SLAB AND BRIDGE, THE END OF SLAB ADJACENT TO END POST WILL BE SEALED WITH LOW MODULUS SILICONE SEALANT.**



REMOVE CONCRETE FROM 18" STRIP WITH CARE TO MAKE CUT AS VERTICAL AS POSSIBLE. EXPOSED BARS TO BE CUT AND BENT TO FIT WITH ALL SCALE AND RUST REMOVED. EPOXY IS REQUIRED BETWEEN NEW AND EXISTING CONCRETE. EXISTING REINFORCING SHALL EXTEND 15" MIN. INTO NEW SECTION. PAYMENT FOR NEW SLAB INCLUDES ALL WORK HERE DESCRIBED.



NOTE: BW INDICATES BRIDGE WIDTH MEASURED FROM BRIDGE GUTTER LINE  
TO BRIDGE GUTTER LINE



**GENERAL NOTES:**

1. REINFORCED CONCRETE APPROACH SLAB INCLUDING BARRIER INDICATES THAT ONE OR MORE CONCRETE (SIDE OR MEDIAN) BARRIERS IS REQUIRED ON THE APPROACH SLAB. IF APPROACH SLAB REQUIRES CURB OR SLOPED EDGE AS WELL AS CONCRETE BARRIER, THE ENTIRE SLAB IS TO BE ITEMIZED AS REINFORCED CONCRETE APPROACH SLAB INCLUDING BARRIER.  
COMPUTE SQ. YDS. OF APPROACH SLAB BY MULTIPLYING THE SLAB PAY WIDTH (In.Ft.) BY  $30/9$ .
2. THE 4" CONCRETE CAP ADJACENT TO APPROACH SLAB WILL HAVE HOLES BLOCKED OUT FOR GUARDRAIL POST INSTALLATION (STD. 4012C) UNLESS IT HAS BEEN VERIFIED THAT GUARDRAIL IS NOT REQUIRED. PAYMENT FOR APPROACH SLAB INCLUDES THE 1/2" EXP. MATERIAL & CONC. CAP WITH THE BLOCKED OUT HOLES.
3. SEE SEPARATE SHEETS FOR SUBBASE OR OTHER MATERIALS UNDER APPROACH SLAB.

T BEAM GUARDRAIL CONN. 3-29-89		DATE		DEPARTMENT OF TRANSPORTATION	
BARRIER REINF. PLACEMENT 12-4-89		REVISION		STATE OF GEORGIA	
REVISED SEC D-D WIDTH 6-28-93				STANDARD	
				30 FT. LENGTH	
				REINFORCED CONCRETE APPROACH SLAB	
				(WITH CONCRETE BARRIER)	
		NO SCALE		JUNE, 1985	
R. M. U.	DES. RMU	(SUBMITTED)	<i>Handwritten Signature</i>		NUMBER 9017M
R. M. U.	DRW RMU	STATE ROAD & AIRPORT DESIGN ENGR.			
R. M. U.	TRN GME	(APPROVED)			
R. M. U.	CHK. RKC	STATE HIGHWAY ENGINEER			