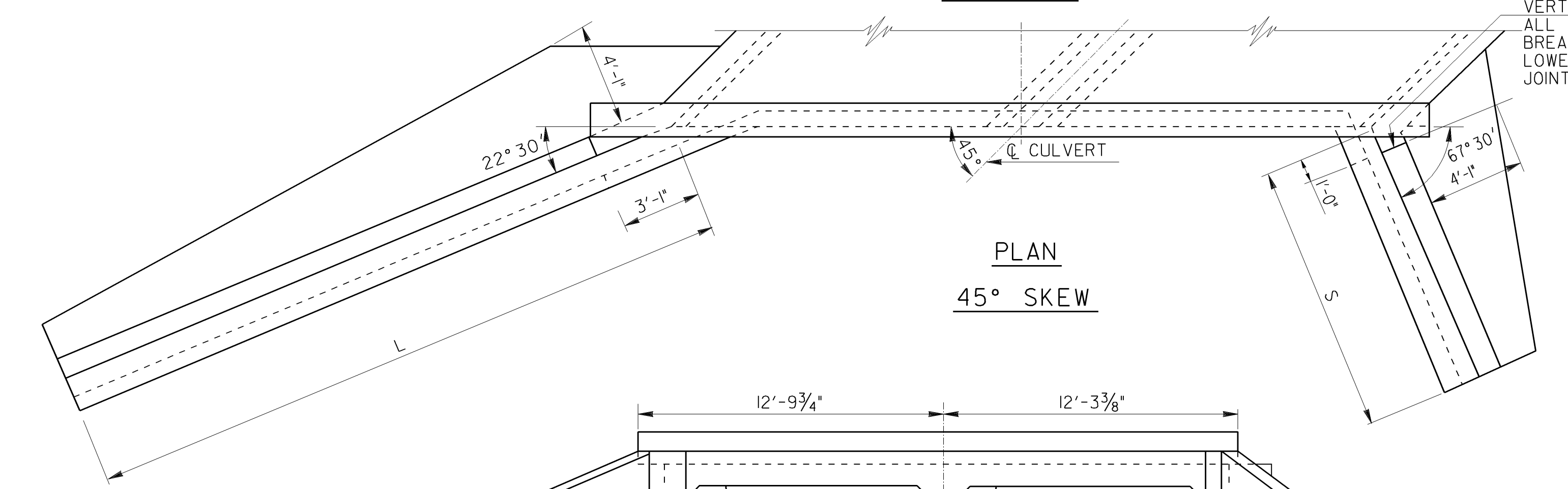
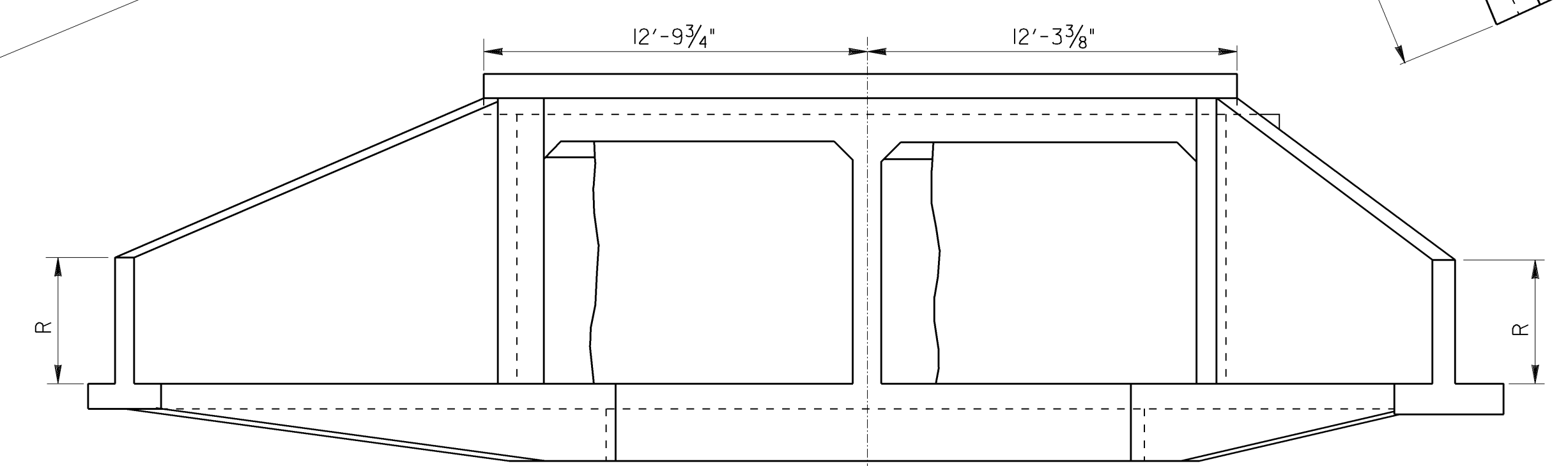


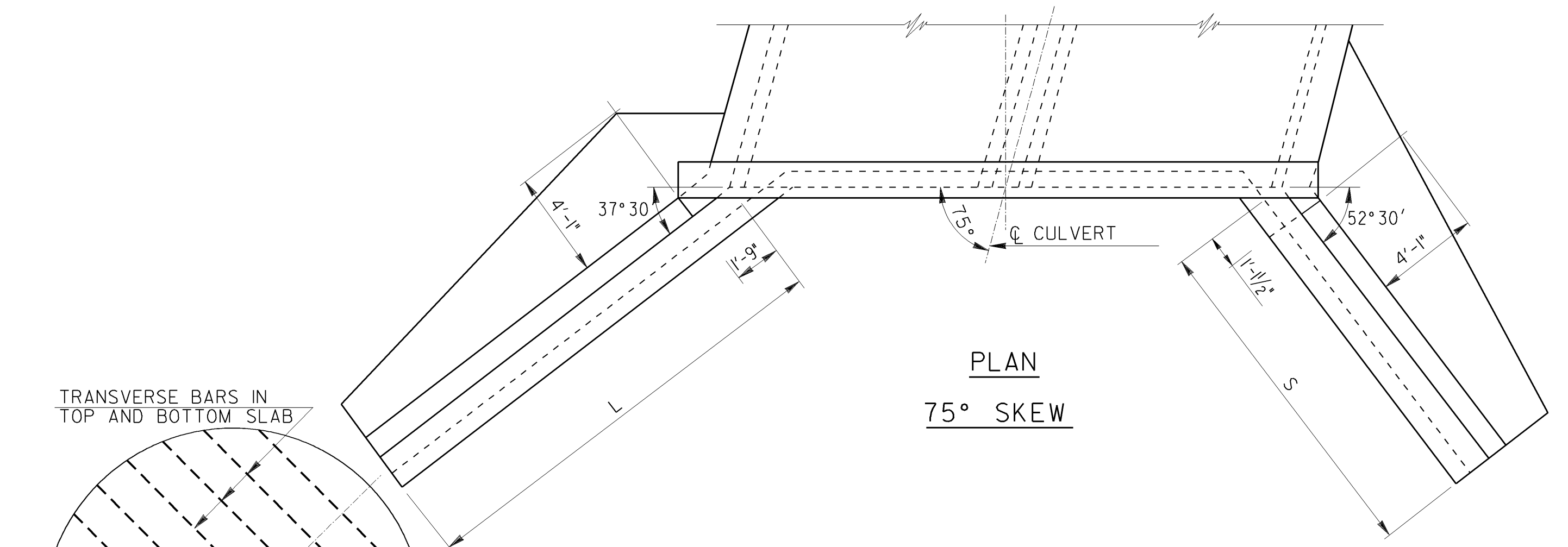
ELEVATION



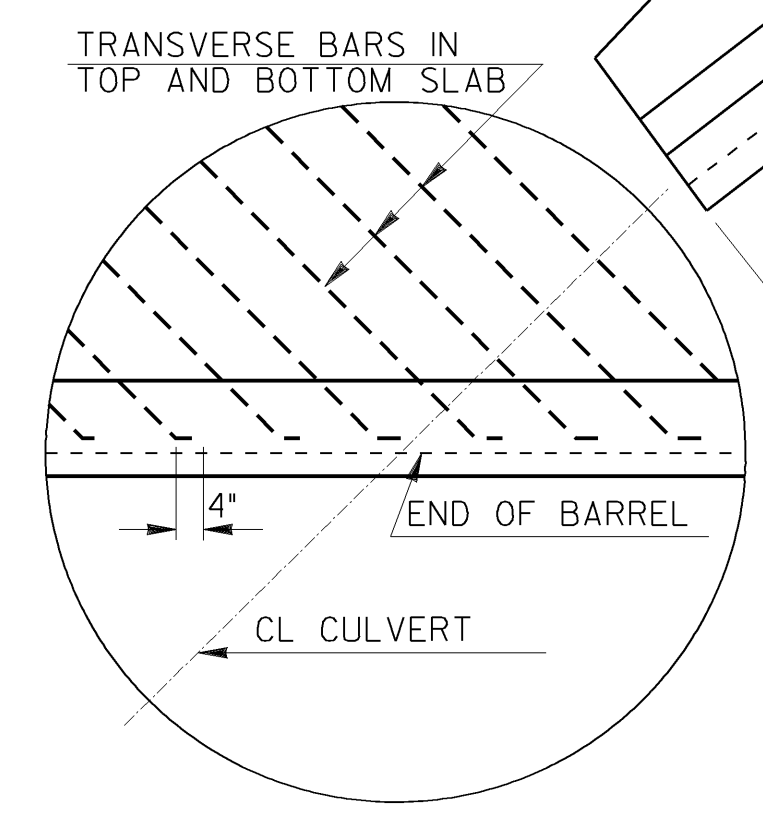
PLAN
45° SKEW



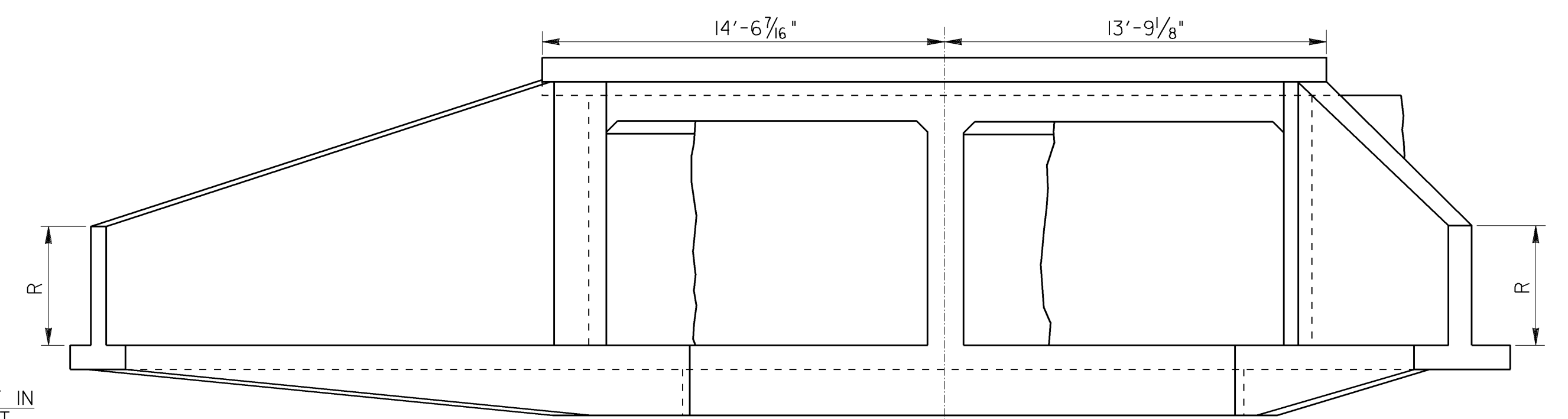
ELEVATION



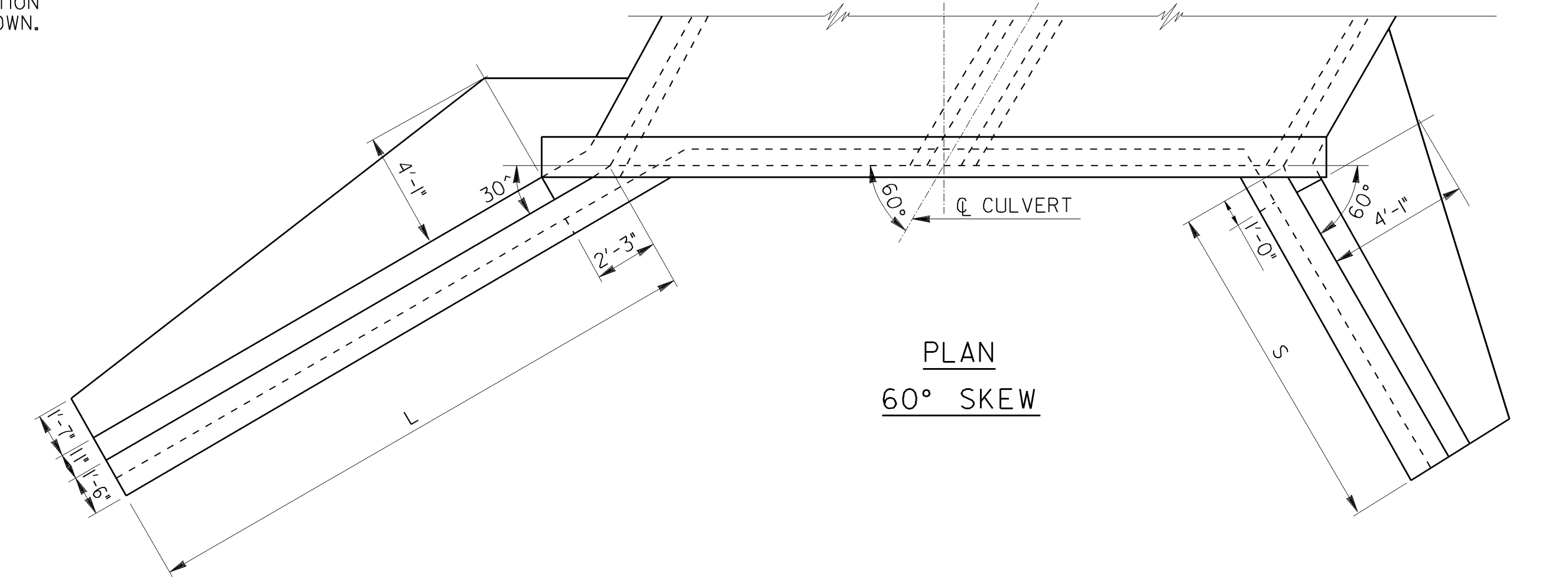
PLAN
75° SKEW



VERTICAL CONSTRUCTION JOINT IN ALL WINGWALLS THIS SHEET AT BREAK OF TOP SLOPE. LOWER HORIZONTAL CONSTRUCTION JOINTS IN WINGWALLS NOT SHOWN.



ELEVATION



PLAN
60° SKEW

GENERAL NOTES

FOR DETAILS OF REINFORCEMENT IN WINGWALLS AND FOOTINGS SEE "WINGWALL REINFORCEMENT DETAILS" AND ACCOMPANYING SECTIONS ON STANDARD NO. 2320 A.

THE 2'-0" PORTION OF BARS WF IS IN THE BARREL WALL. WEEP HOLES NOT SHOWN IN WINGWALLS. PLACE WEEP HOLES IN WINGWALLS A MINIMUM OF 10'-0" O.C.

FOR OTHER GENERAL NOTES SEE STANDARD NO. 2320 A

BOX CULVERT REQUIREMENTS:

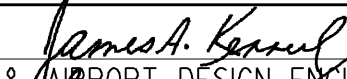
MINIMUM FILL HEIGHT FROM TOP OF CULVERT TO BOTTOM OF BASE WITHIN TRAVELWAY SHALL BE 12 INCHES.

MAXIMUM POUR LENGTH SHALL NOT EXCEED 30 FEET ALONG THE LENGTH OF THE CULVERT.

TRANSVERSE CONSTRUCTION JOINTS SHALL BE PLACED IN THE BARREL, NORMAL TO THE CENTERLINE OF CULVERT, AT THE OUTSIDE SHOULDER BREAK POINTS. LONGITUDINAL BARREL REINFORCING STEEL SHALL NOT BE CONTINUOUS THROUGH THESE JOINTS, PROVIDED THAT THE JOINTS ARE MORE THAN 15 FEET FROM THE BARREL ENDS.

WHEN TRANSVERSE CONSTRUCTION JOINTS OCCUR WITHIN 15 FEET OF THE BARREL ENDS OR WITHIN THE LIMITS OF THE PAVEMENT, THE LONGITUDINAL BARREL REINFORCING SHALL THEN BE CONTINUOUS THROUGH SUCH JOINTS. THE MINIMUM LENGTH OF LAP SPLICE FOR LONGITUDINAL REINFORCING SHALL BE 24 INCHES.

TRANSVERSE CONSTRUCTION JOINTS PLACED AT ANY OTHER LOCATION NOT SPECIFIED ABOVE SHALL BE FORMED WITH NO LONGITUDINAL REINFORCING STEEL PASSING THROUGH THE JOINTS.

II-5-01		8-27-63	DATE	DEPARTMENT OF TRANSPORTATION	
				STATE OF GEORGIA	
ADDED REQUIREMENT NOTE	REMOVE BOTTOM FILLETS	REVISION		STANDARD	
				REINFORCED CONCRETE BOX CULVERTS, DOUBLE 10'X8', 10'X9', AND 10'X10', FOR 45°, 60° AND 75° SKEWS	
		SCALE: 1"=4'-0"		APRIL 1958	
J.T.K.	BY	DESIGNED J.T.K.	(SUBMITTED)	 JAMES H. KINNEL STATE ROAD & AIRPORT DESIGN ENGINEER	NUMBER 2320C
		TRACED H.L.K.-B.W.S.	(APPROVED)		
		CHECKED H.R.			