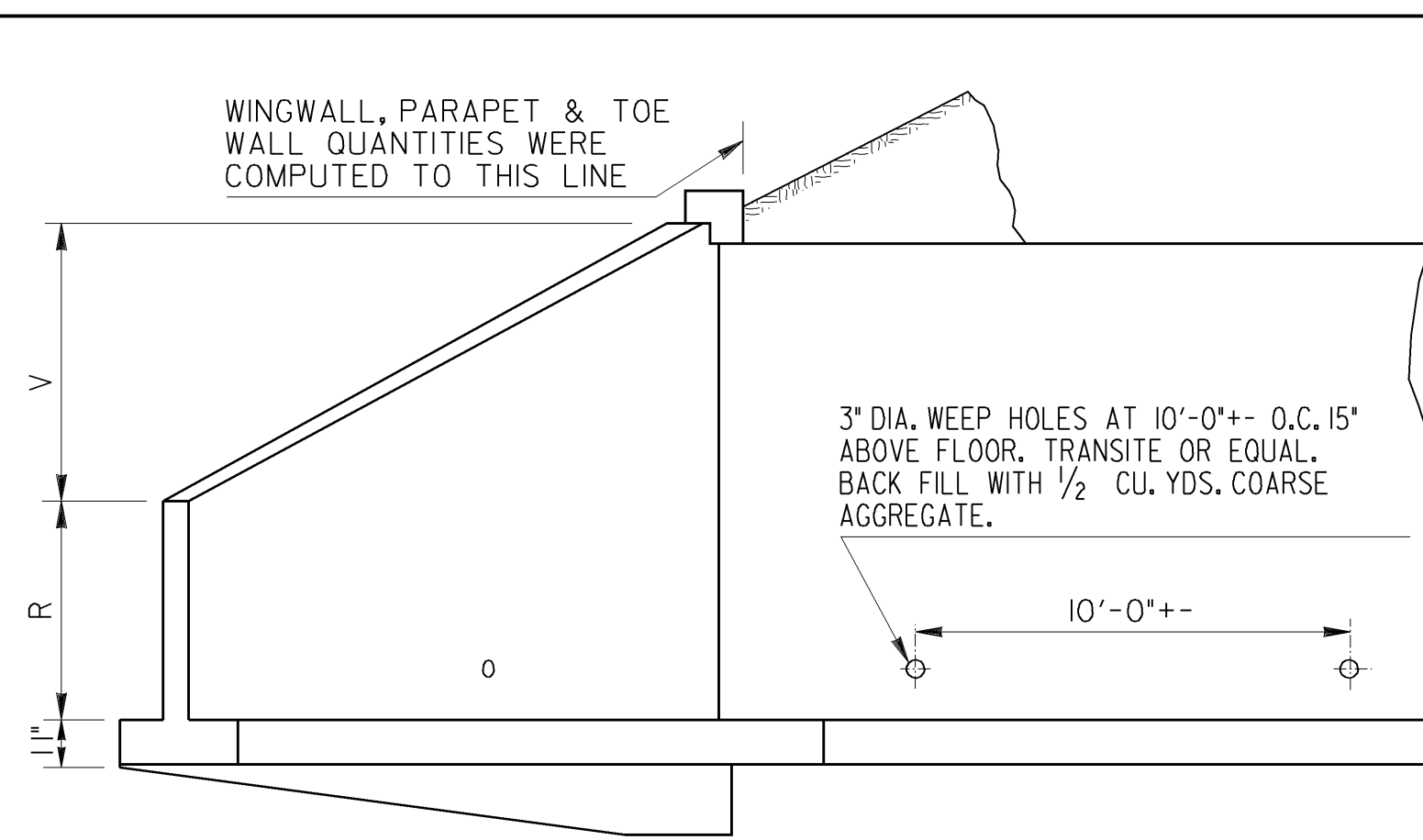
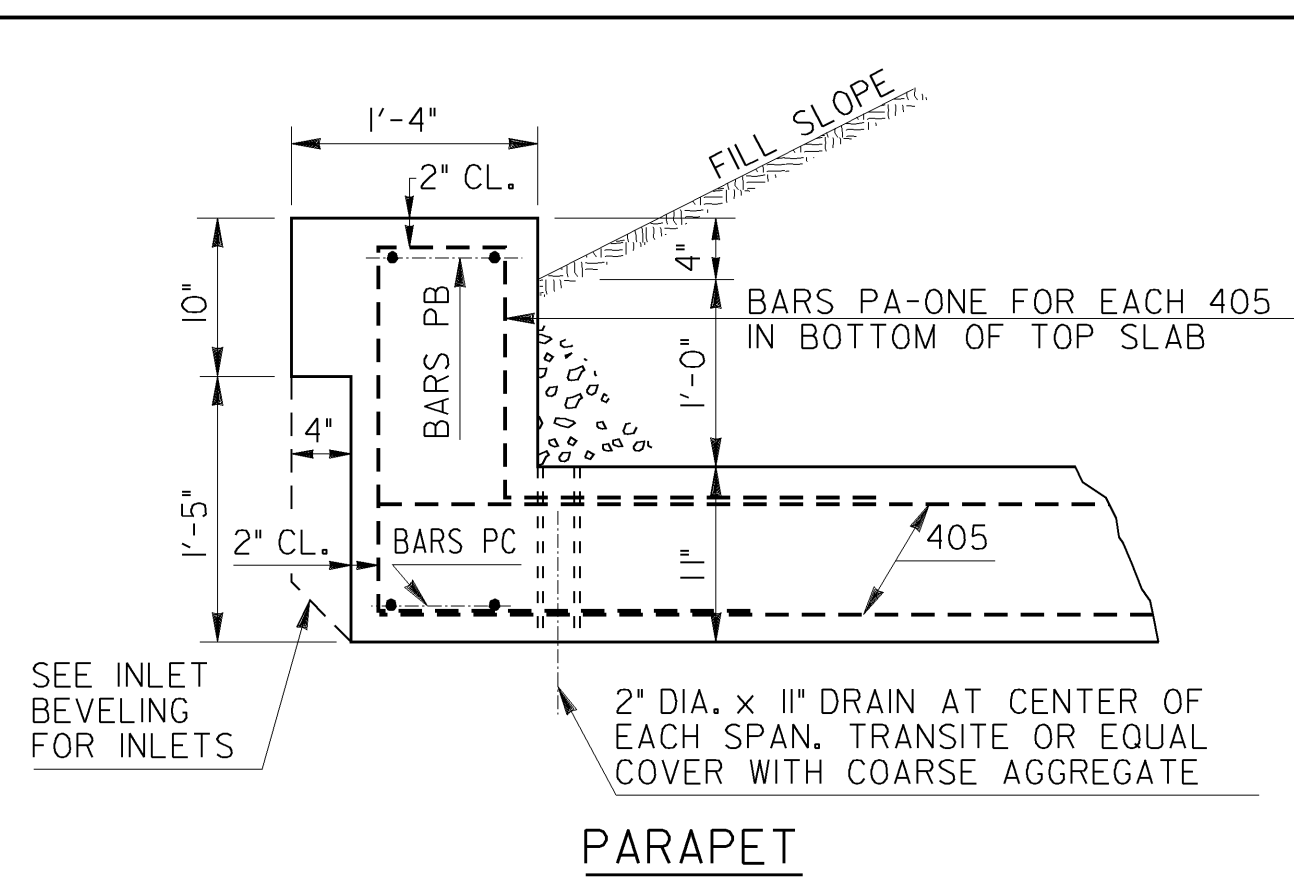


HALF END ELEVATION

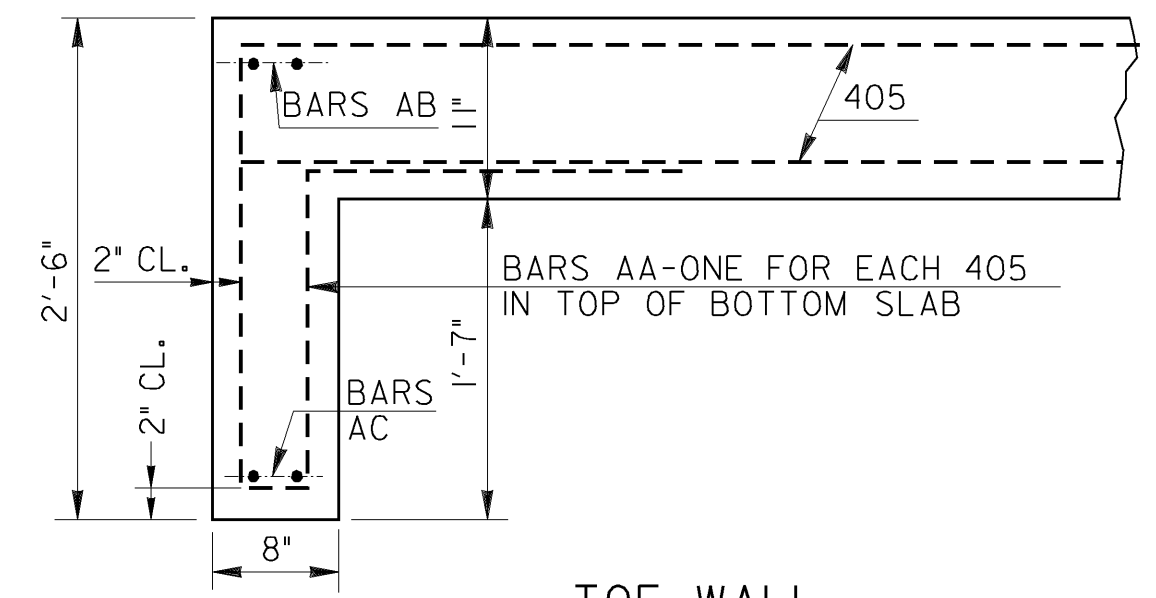


PART ELEVATION



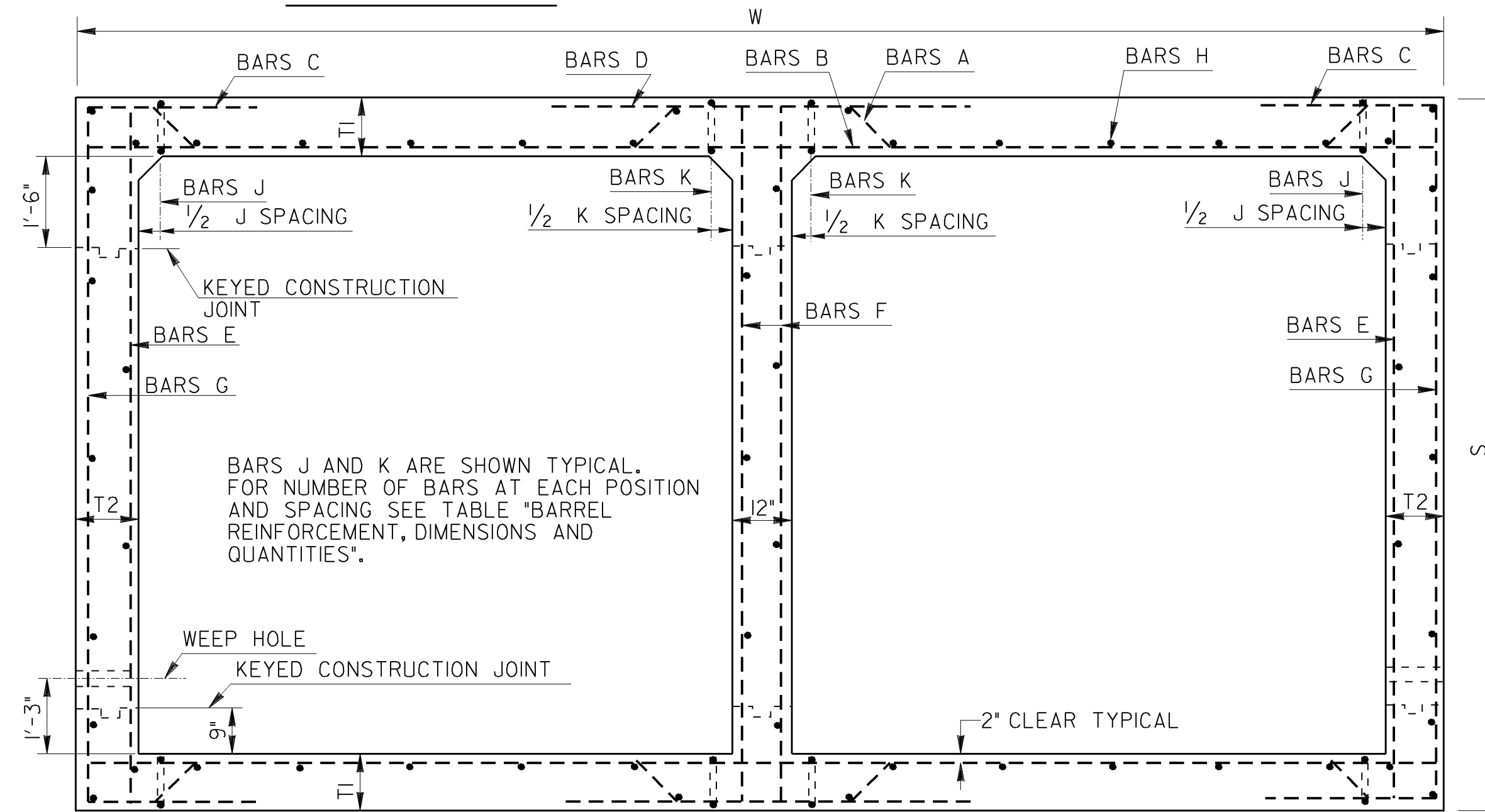
PARAPET

MAIN SLAB REINFORCEMENT NOT SHOWN



TOE WALL

SECTION D-D  
SCALE: 1"=1'-0"



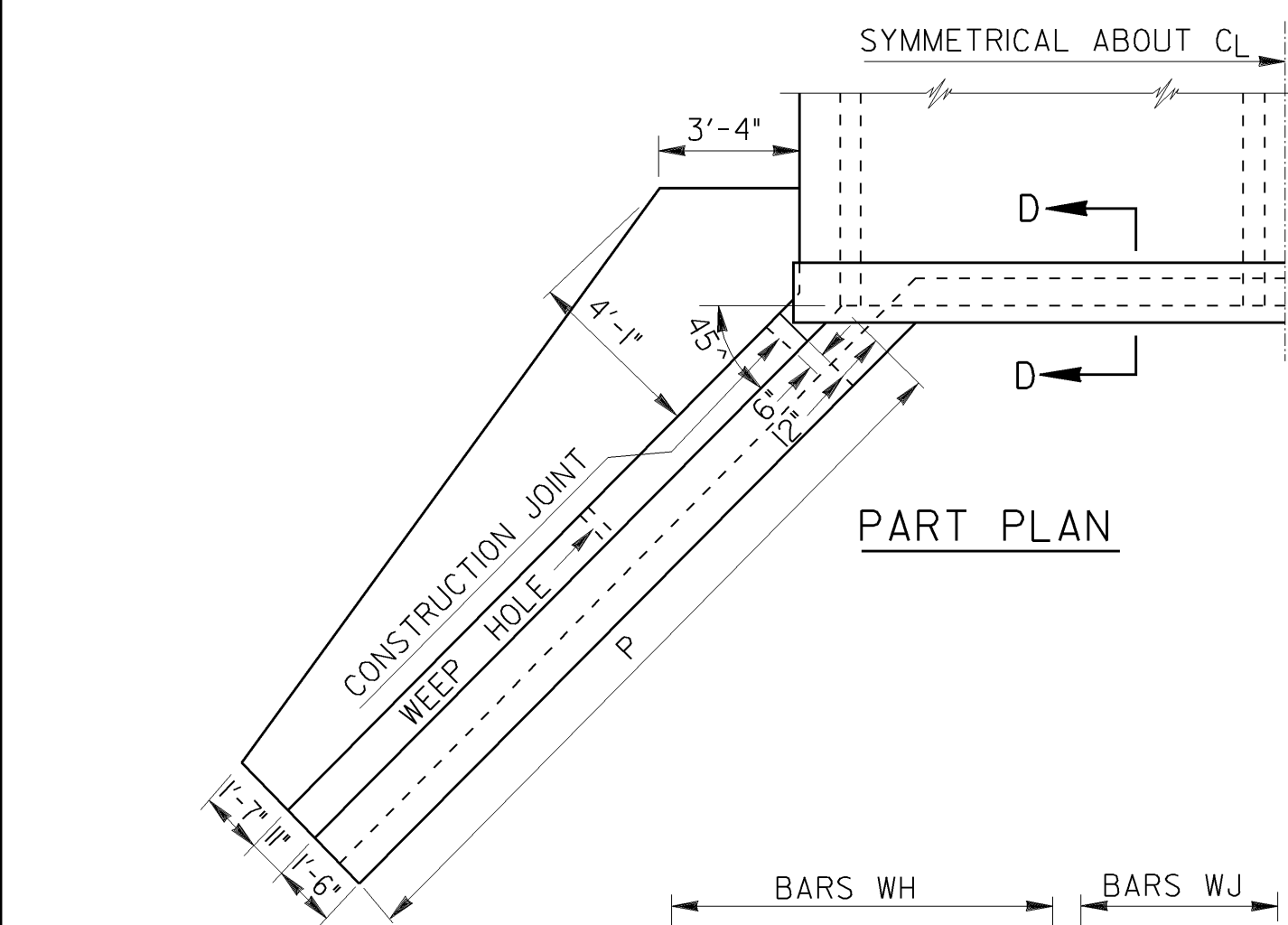
BARREL SECTION

GENERAL NOTES

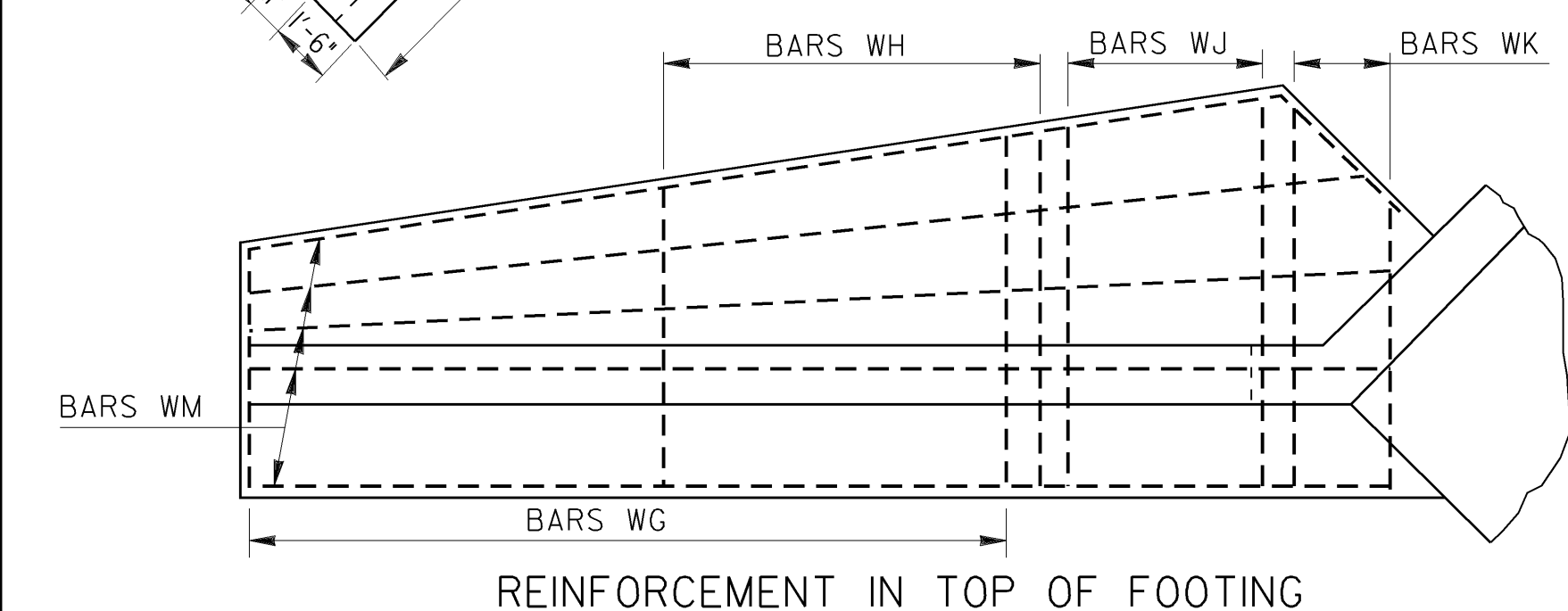
SPECIFICATIONS-GEORGIA STANDARD.  
ALL CONCRETE SHALL BE CLASS A.  
CHAMFER ALL EXPOSED EDGES 3/4".  
ALL CULVERTS SHALL BEGIN AND END WITH DESIGN I.  
COST OF DRAIN PIPES, WEEP HOLES, COARSE AGGREGATE,  
AND ANY OTHER INCIDENTAL ITEMS SHALL BE INCLUDED  
IN PRICES BID FOR CONTRACT ITEMS.  
CONSTRUCTION JOINTS IN BARREL WALLS AND WINGWALL  
ARE REQUIRED. BARREL WALLS TO SET AT LEAST 2 HOURS  
BEFORE POURING TOP SLAB.

DESIGN DATA

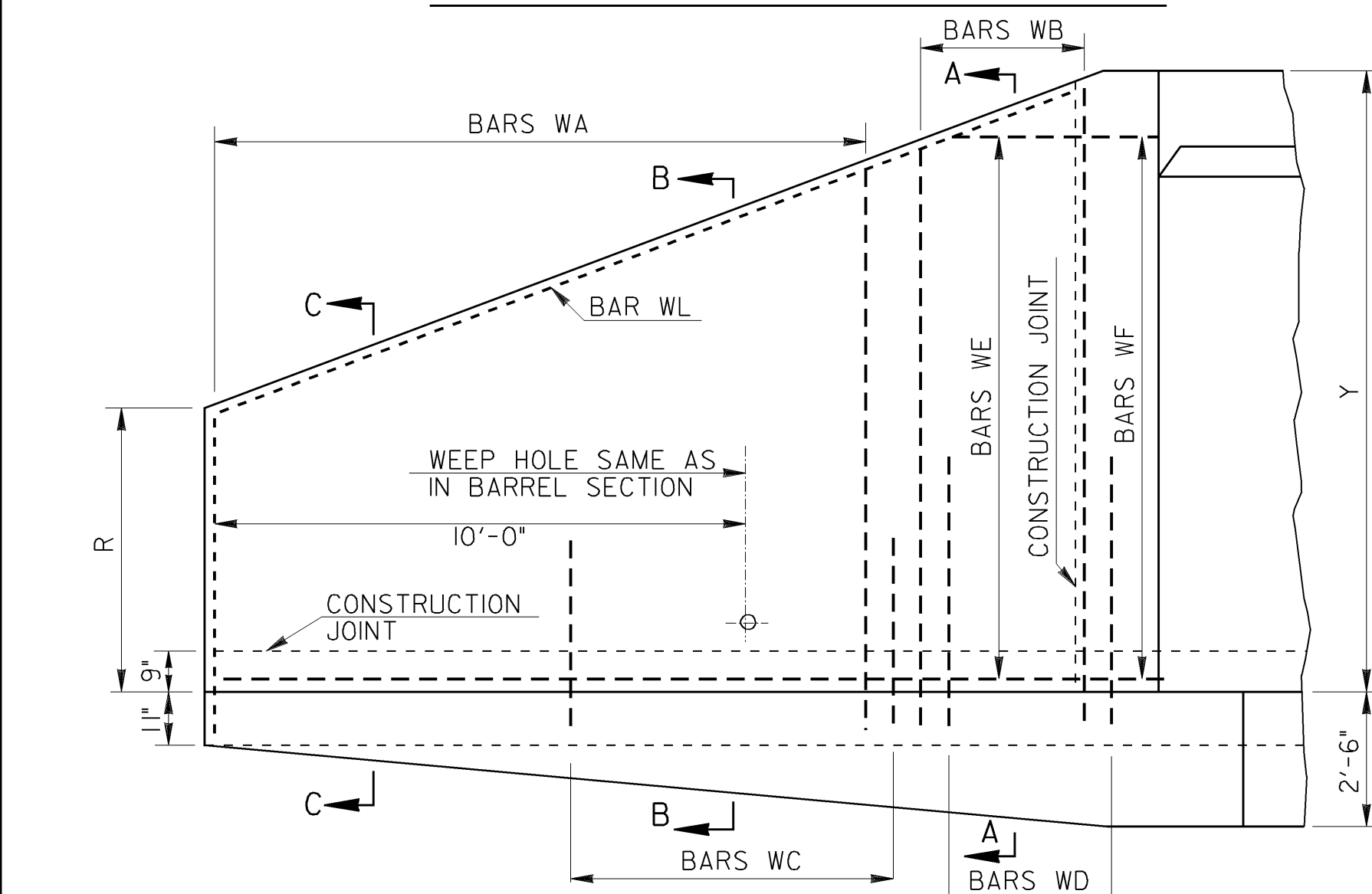
SPECIFICATIONS, A.A.S.H.O. 1953.  
TYPICAL H20-S16 AND/OR MILITARY LOADING  
IMPACT ALLOWED.



PART PLAN



REINFORCEMENT IN TOP OF FOOTING



ARRANGE VERTICAL REINFORCEMENT TO CLEAR VERTICAL  
CONSTRUCTION JOINT BEFORE POURING FOOTING.

WINGWALL REINFORCEMENT DETAILS

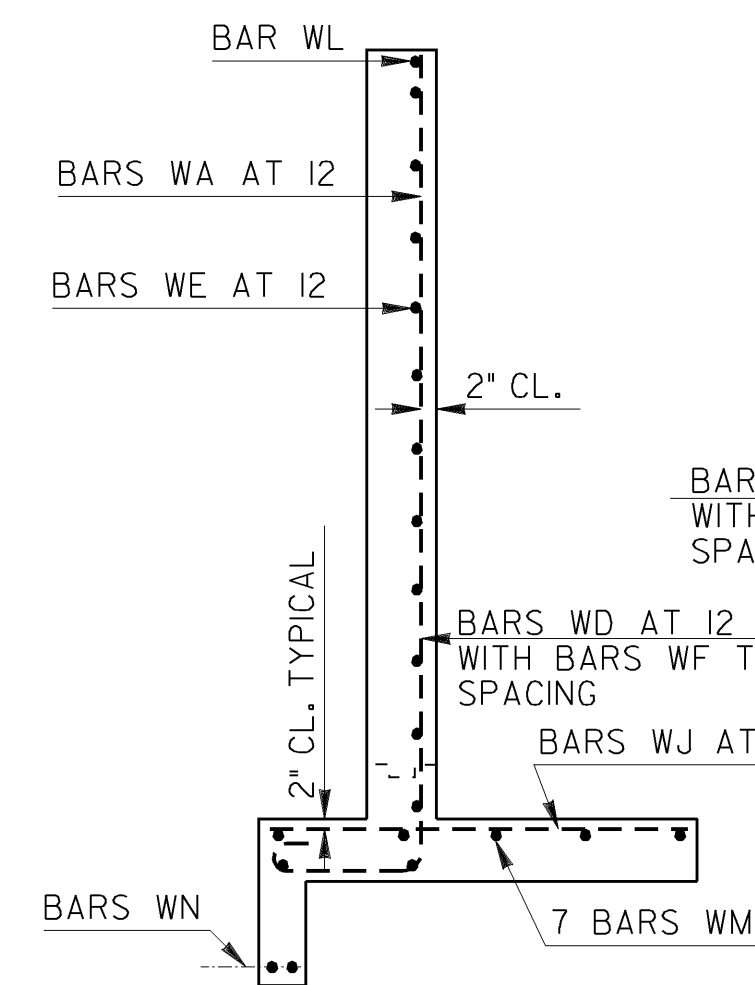
BOX CULVERT REQUIREMENTS:

MINIMUM FILL HEIGHT FROM TOP OF CULVERT TO BOTTOM OF  
BASE WITHIN TRAVELWAY SHALL BE 12 INCHES.

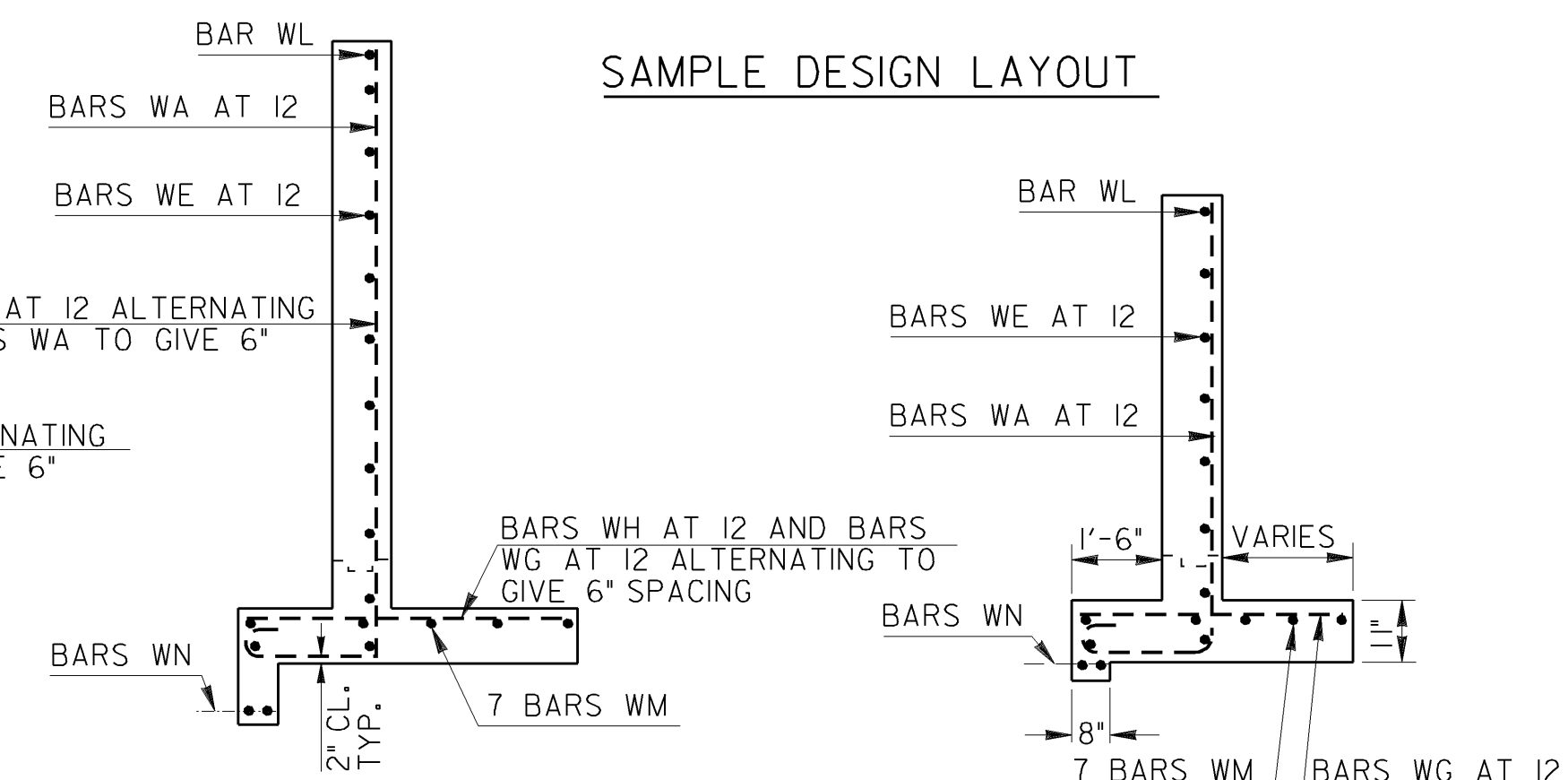
MAXIMUM POUR LENGTH SHALL NOT EXCEED 30 FEET ALONG THE  
LENGTH OF THE CULVERT.

TRANSVERSE CONSTRUCTION JOINTS SHALL BE PLACED IN THE  
BARREL, NORMAL TO THE CENTERLINE OF CULVERT, AT THE  
OUTSIDE SHOULDER BREAK POINTS. LONGITUDINAL BARREL  
REINFORCING STEEL SHALL NOT BE CONTINUOUS THROUGH  
THESE JOINTS, PROVIDED THAT THE JOINTS ARE MORE THAN 15  
FEET FROM THE BARREL ENDS.  
WHEN TRANSVERSE CONSTRUCTION JOINTS OCCUR WITHIN 15  
FEET OF THE BARREL ENDS OR WITHIN THE LIMITS OF THE  
PAVEMENT, THE LONGITUDINAL BARREL REINFORCING SHALL  
THEN BE CONTINUOUS THROUGH SUCH JOINTS. THE MINIMUM  
LENGTH OF LAP SPLICE FOR LONGITUDINAL REINFORCING SHALL  
BE 24 INCHES.

TRANSVERSE CONSTRUCTION JOINTS PLACED AT ANY OTHER  
LOCATION NOT SPECIFIED ABOVE SHALL BE FORMED WITH NO  
LONGITUDINAL REINFORCING STEEL PASSING THROUGH THE  
JOINTS.



SECTION A-A



SAMPLE DESIGN LAYOUT

SECTION B-B

SECTION C-C

DEPARTMENT OF TRANSPORTATION STATE OF GEORGIA			
STANDARD REINFORCED CONCRETE BOX CULVERT DOUBLE 10X8, 10X9 AND 10X10 FOR DEPTHS OF FILL UP TO 50 FEET			
NO SCALE UNLESS NOTED			
NOVEMBER 1957			
NUMBER 2320A			