

NOTE: OPENINGS IN GRATES SHALL BE PERPENDICULAR TO DIRECTION OF TRAFFIC FOR ALL STRUCTURES.

10'-0"

6% GRADE

NORMAL PAVING GRADE

3'-0"

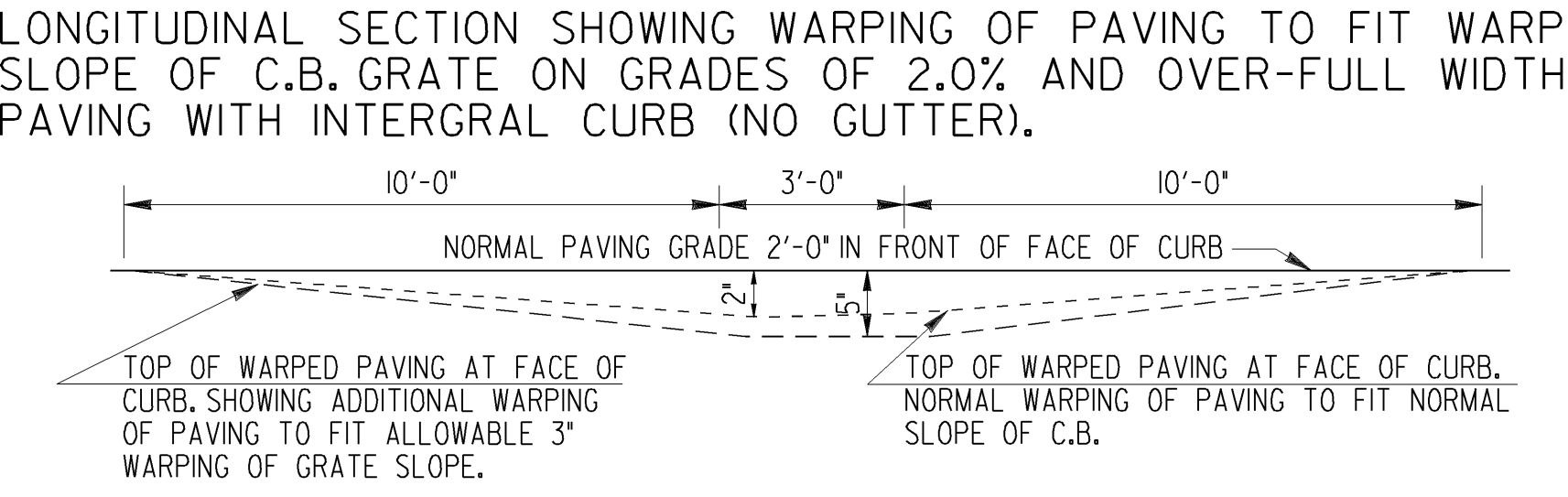
2'-0" IN FRONT OF FACE OF CURB

VARIABLE, NOT LESS THAN 2'-6"

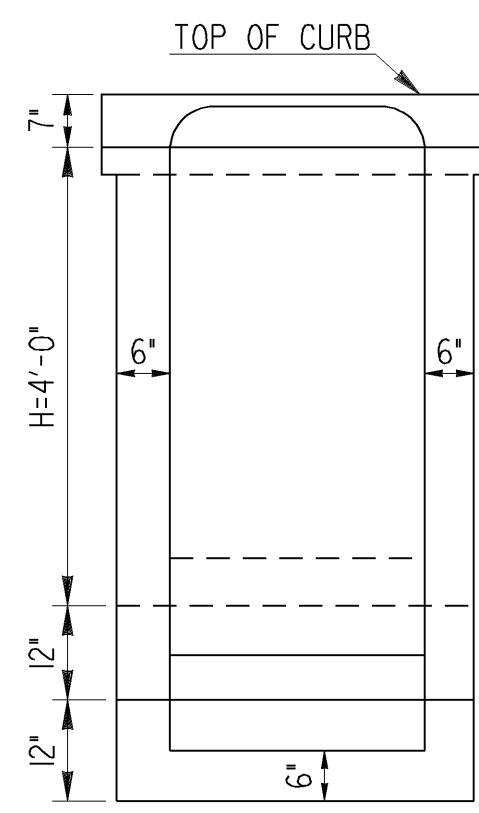
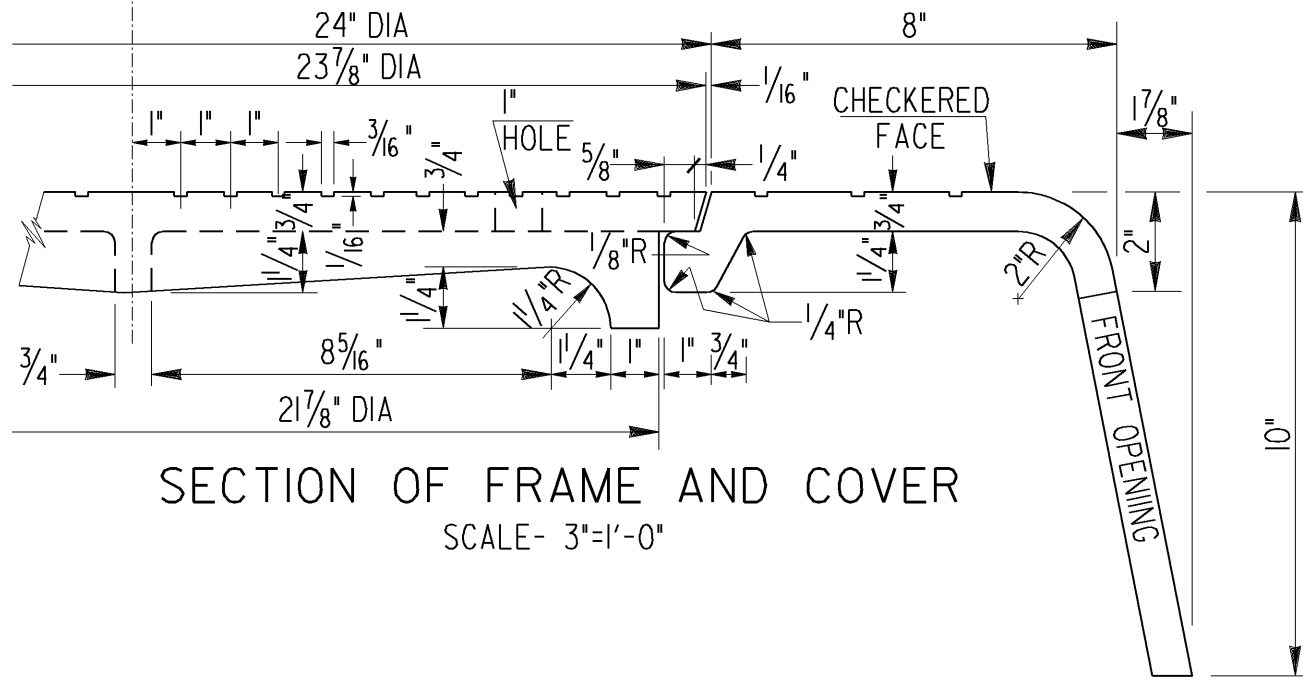
5"

TOP OF WARPED PAVING AT FACE OF CURB (MAXIMUM WARP) WITH DOWN GRADE TRANSITION SHORTENED TO RETARD WATER FLOW.

ON GRADES OF 2.0% AND OVER, THE SLOPE OF C.B. GRATE TO BE WARPED TO THE MAXIMUM SLOPE OF 5" IN 2'-0" AND THE TRANSITION OF THE WARPED PAVING AT FACE OF CURB TO BE SHORTENED TO NOT LESS THAN 2'-6" IN PLACE OF NORMAL 10'-0" TRANSITION ON DOWN GRADE SIDE OF C.B.



LONGITUDINAL SECTION SHOWING WARPING OF PAVING TO FIT SLOPE OF GRATING WHERE PAVING IS FULL WIDTH WITH INTEGRAL CURB (NO GUTTER).



NOTE:
WEEPHOLES MAY BE EITHER 4" DIA ROUND
OR 4" SQUARE.
AGGREGATE FOR BACKFILL AT WEEPHOLES
SHALL CONSIST OF A MIXTURE OF 50% SIZE
57, M-58, 357 OR 467 COARSE AGGREGATE
AND 50% SIZE 10 SAND, AND SHALL BE
PLACED IMMEDIATELY PRIOR TO COMPACTING
BASE MATERIAL.

NOTE:
ALL TRAPS WILL BE OMITTED UNLESS SHOWN ON PLANS.

			DATE	DEPARTMENT OF TRANSPORTATION STATE OF GEORGIA			
			REVISION	STANDARD CATCH BASINS WITH CASTINGS REINFORCED CONCRETE BASIN WITH HOOD - TYPE A NO SCALE REV. & REDR. AUG. 1999			
		BY	DESIGNED _____ DRAWN M.A.B. CHECKED G.L.O.	(SUBMITTED) _____ STATE ROAD & AIRPORT DESIGN ENGINEER (APPROVED) _____ CHIEF ENGINEER	NUMBER 1013		