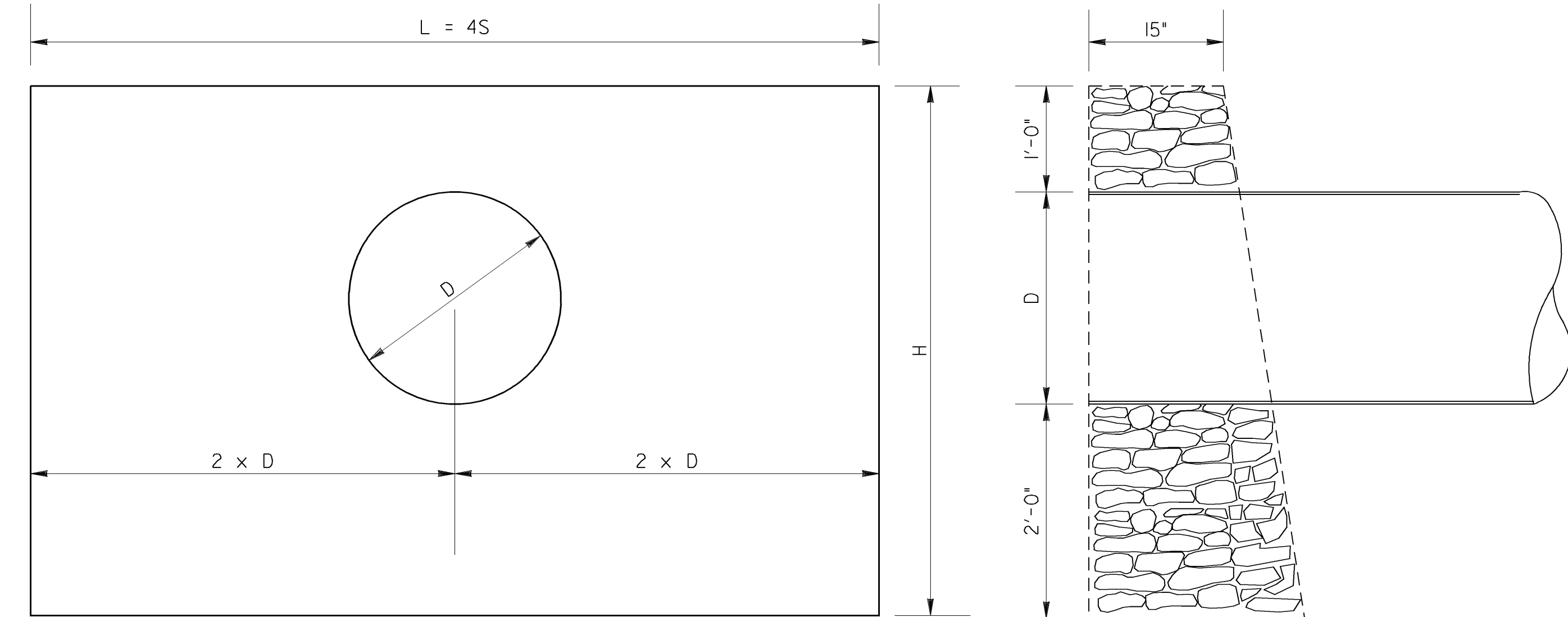


STATE	PROJECT NUMBER	SHEET NO.	TOTAL SHEETS
GA.			

DIMENSIONS FOR SINGLE LINE OF PIPE			
D	H	L	B
12"	4'-0"	4'-0"	1'-7"
15"	4'-3"	5'-0"	1'-8 1/4"
18"	4'-6"	6'-0"	1'-10 1/4"
24"	5'-0"	8'-0"	2'-0"
30"	5'-6"	10'-0"	2'-2 1/2"
36"	6'-0"	12'-0"	2'-5 1/2"



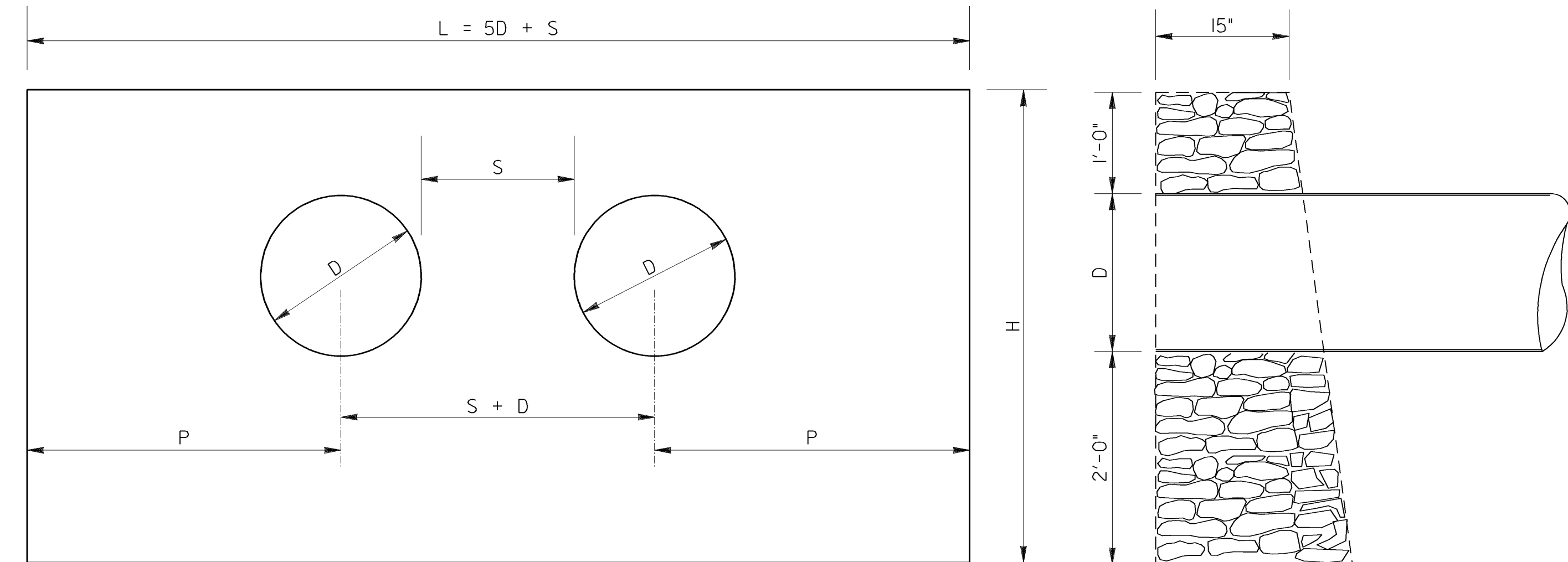
SINGLE LINE OF PIPE

GENERAL NOTES:
HEADWALLS SHALL BE BUILT ACCORDING TO STANDARD SPECIFICATIONS FOR CEMENT RUBBLE MASONRY.
STONE SHALL BE BEDDED IN 1/3 PORTLAND CEMENT MORTAR.
HEADERS SHALL BE DISTRIBUTED THROUGH WALLS SO AS TO FORM ABOUT ONE SIXTH OF FACE OF WALL, AND SHALL EXTEND ENTIRELY THROUGH THE WALL.
WALLS SHALL BE NEATLY TOPPED WITH LAYER OF 1-1 MORTAR, AT LEAST 1" THICK, TROWELED SMOOTH, AND BEVELED AT EDGES.
DEPTH OF WALL BELOW PIPE TO BE VARIED TO SUIT LOCAL CONDITIONS.
WHERE DEPTH OF WALL IS INCREASED BY MORE THAN 2'-0" USE 0.4 OF HEIGHT FOR WIDTH OF BASE.

QUANTITIES FOR ONE END WALL		
D	CU. YDS. ONE LINE	CU. YDS. TWO LINE
12"	0.80	1.18
15"	1.09	1.64
18"	1.46	2.14
24"	2.23	3.26
30"	3.26	4.64
36"	4.44	6.41

NOTE:
QUANTITIES ARE BASED ON DEPTH OF TWO FT. BELOW PIPE. THIS DIMENSION MAY BE VARIED TO SUIT LOCAL CONDITIONS.

DIMENSIONS FOR DOUBLE LINE OF PIPE						
D	H	L	S	P	S + D	B
12"	4'-0"	6'-0"	1'-0"	2'-0"	2'-0"	1'-7"
15"	4'-3"	7'-6"	1'-3"	2'-6"	2'-6"	1'-8 1/4"
18"	4'-6"	9'-0"	1'-6"	3'-0"	3'-0"	1'-10 1/4"
24"	5'-0"	12'-0"	2'-0"	4'-0"	4'-0"	2'-0"
30"	5'-6"	15'-0"	2'-6"	5'-0"	5'-0"	2'-2 1/2"
36"	6'-0"	18'-0"	3'-0"	6'-0"	6'-0"	2'-5 1/2"



DOUBLE LINE OF PIPE

NOTES TO DESIGNER:
THIS STANDARD IS LIMITED FOR USE ONLY AT SPECIAL CONDITIONS, OTHERWISE USE OTHER STANDARDS FOR TAPERED HEADWALLS OR SAFETY END SECTIONS.
HEADWALLS ARE NOT TO BE PLACED INSIDE THE CLEAR ZONE.

		DATE		DEPARTMENT OF TRANSPORTATION STATE OF GEORGIA	
		REVISION		STANDARD RUBBLE MASONRY HEADWALLS FOR PIPE CULVERTS STD. 1004 REVISED AND REDRAWN	
		NO SCALE		REV. & REDR. AUG. 1999	
		BY		DESIGNED (SUBMITTED) REVISOR (APPROVED) CHECKED (APPROVED)	
				STATE ROAD & AIRPORT DESIGN ENGINEER CHIEF ENGINEER	
				NUMBER 1004A	