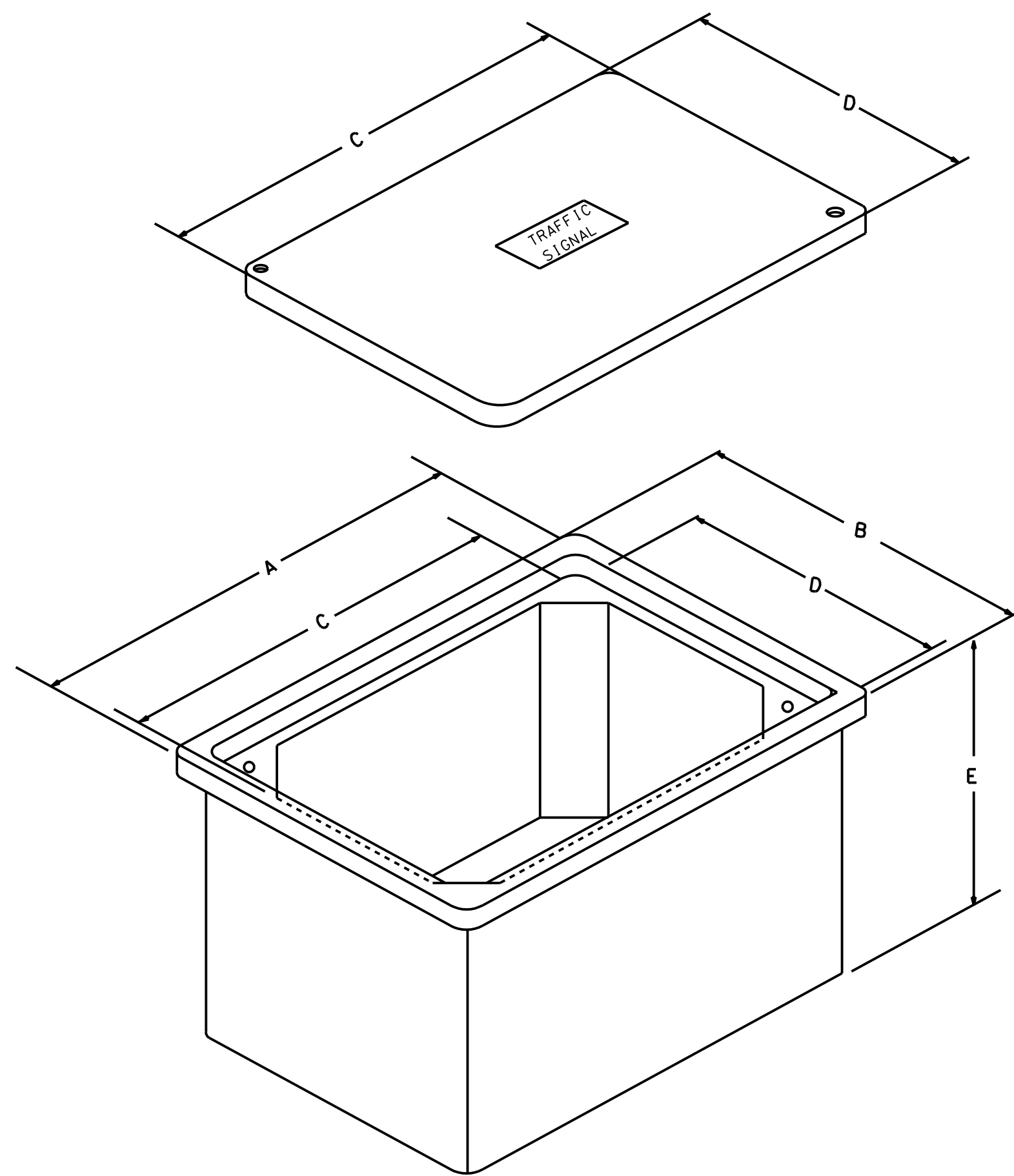
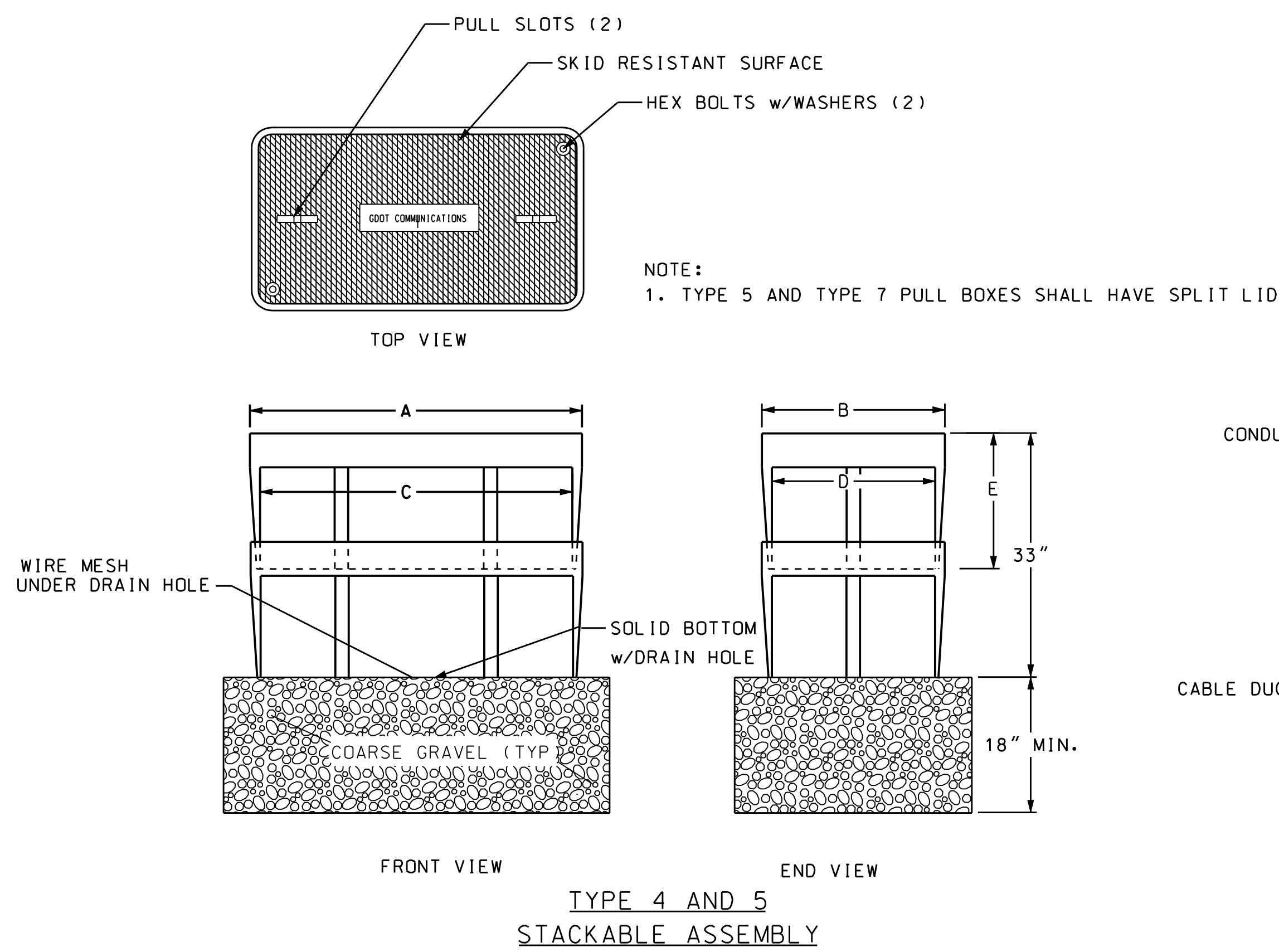


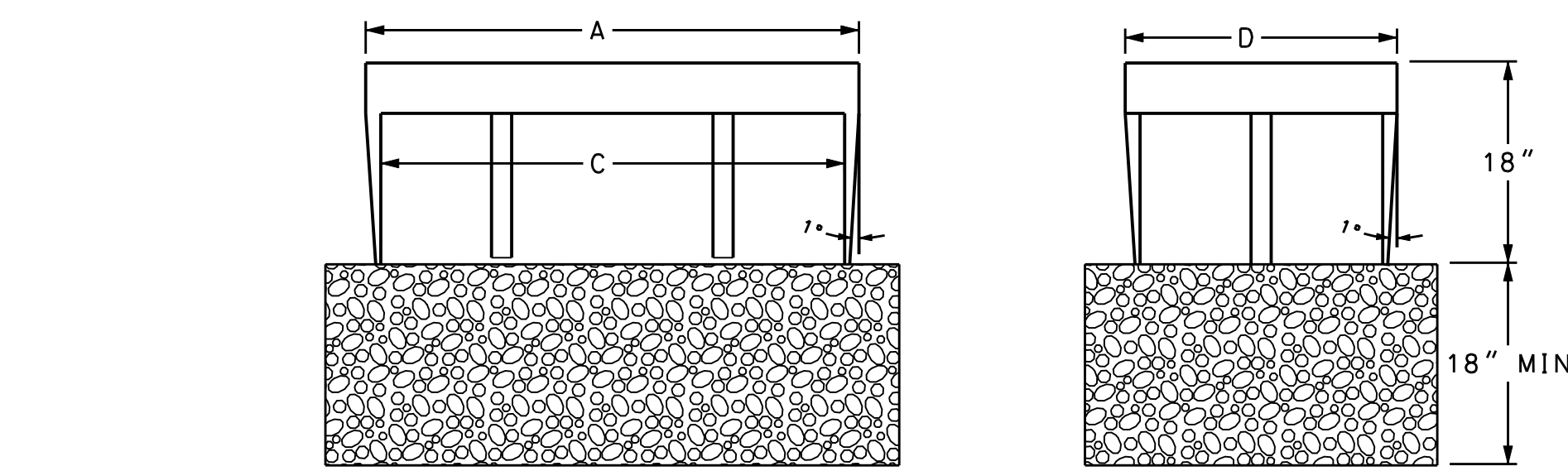
**PULLBOX TYPES
1, 2 AND 3**



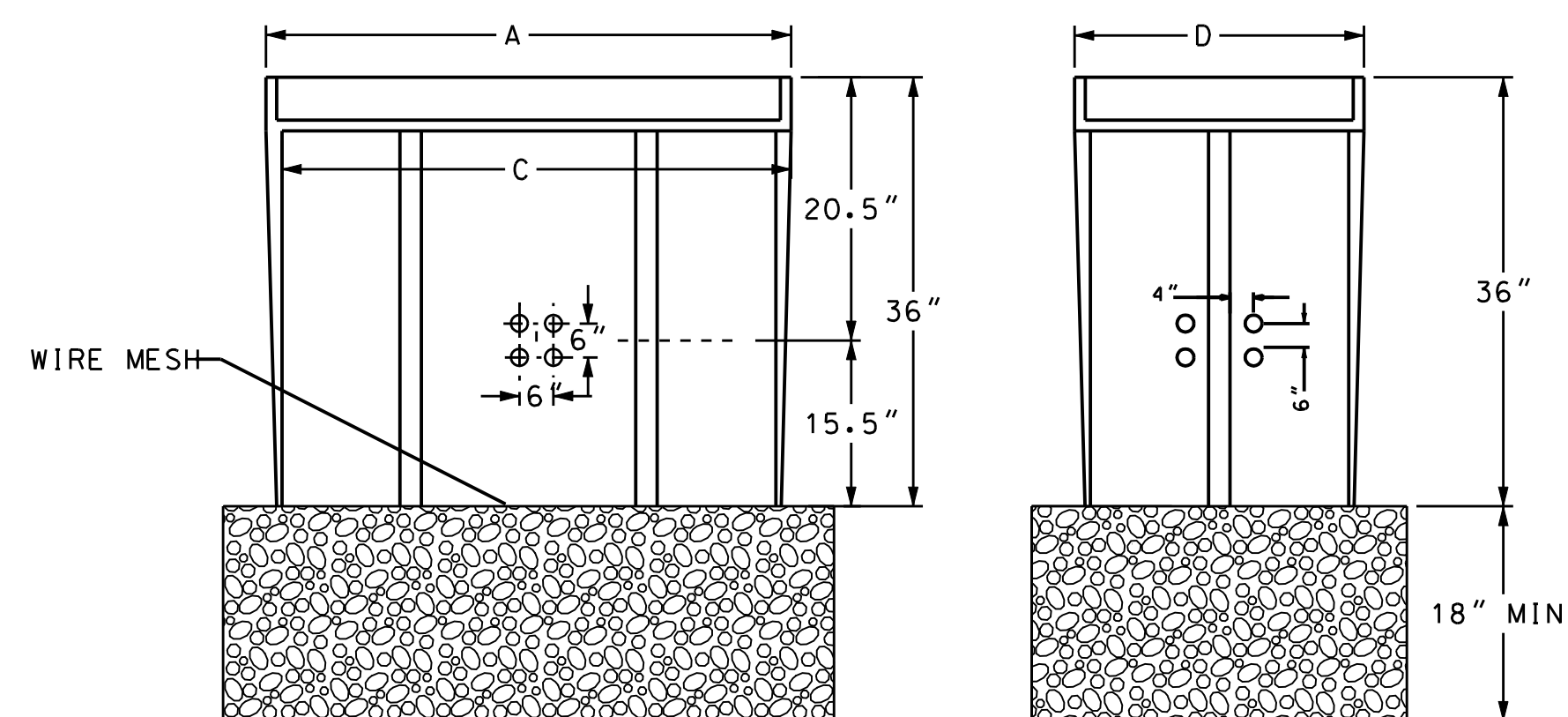
TYPE 4, 5, 4S, 5S, 6, AND 7 PULLBOX ASSEMBLIES



**TYPE 4 AND 5
STACKABLE ASSEMBLY**

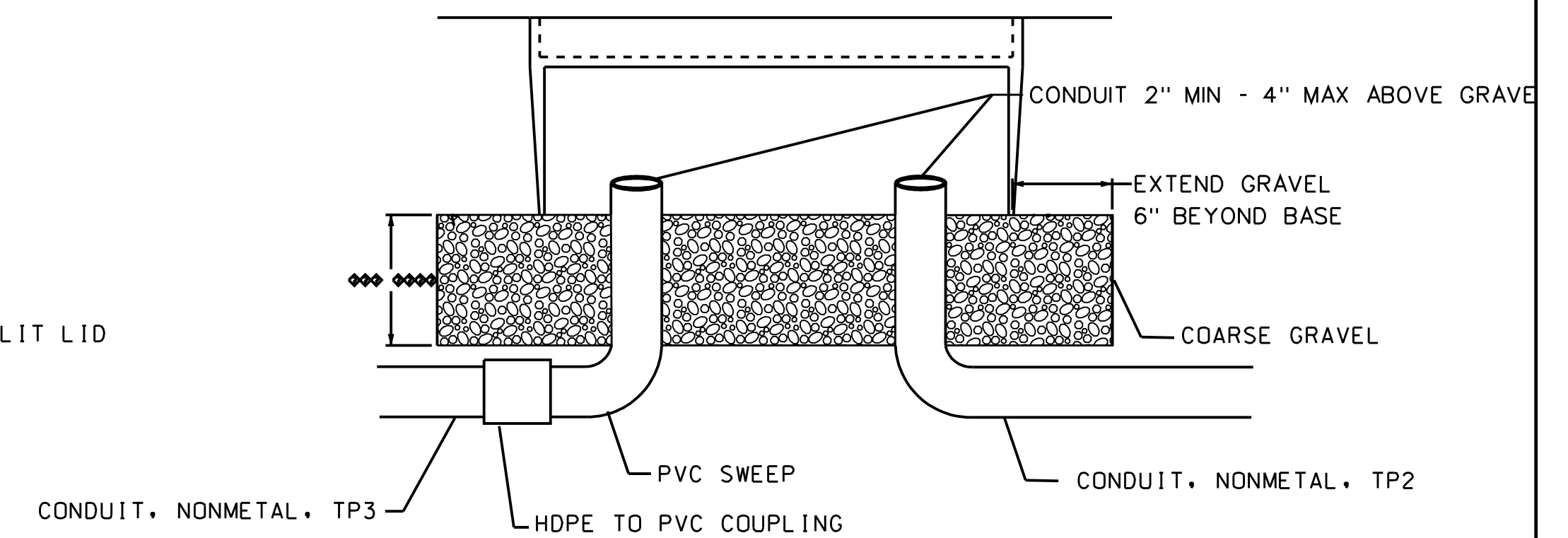


TYPE 4S AND 5S

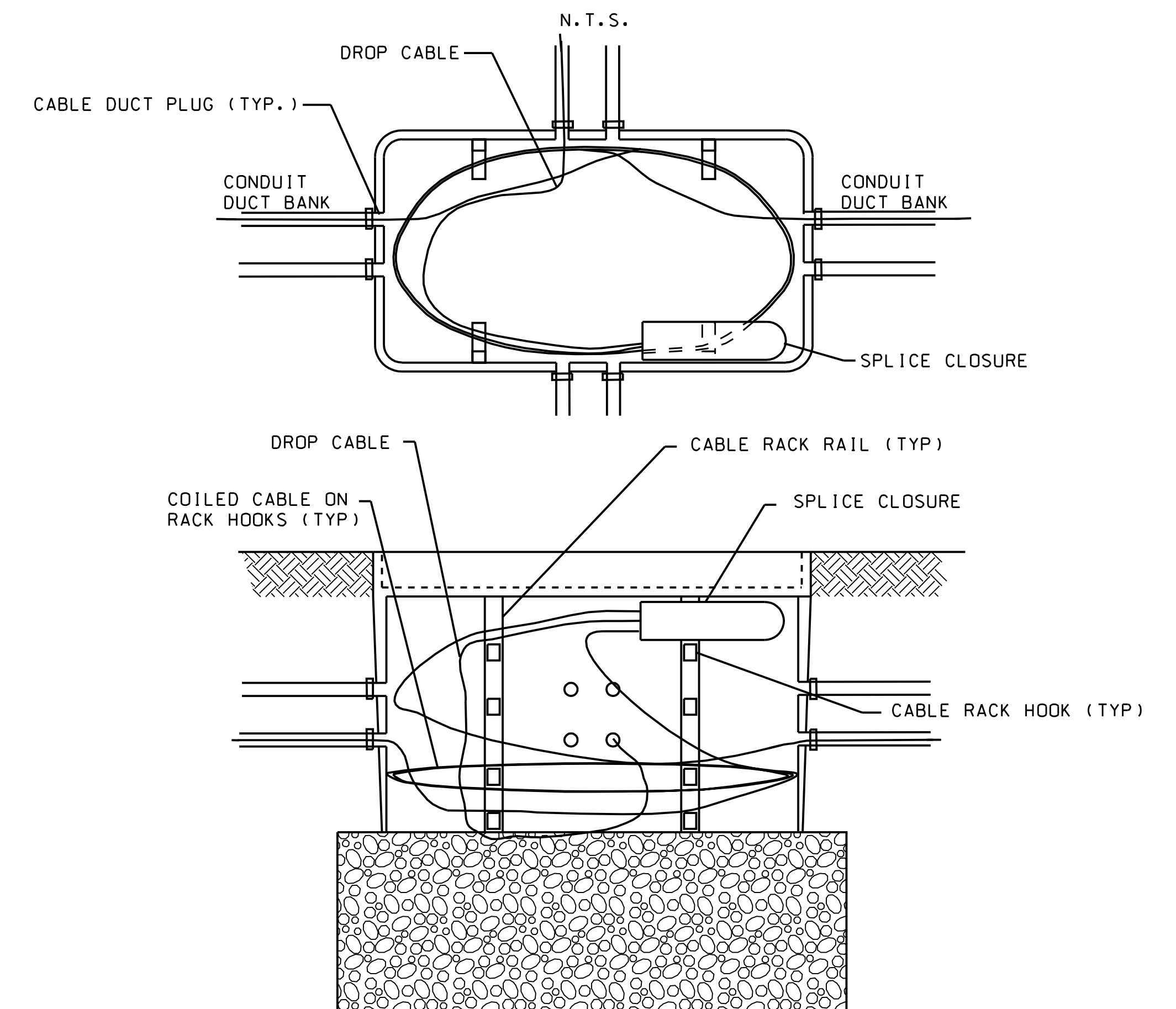


TYPE 6 AND 7

**TYPICAL CONDUIT ENTRANCE DETAILS
TYPE 1, 2, 3, 4S & 5S**



FIBER OPTIC CABLE MANAGEMENT IN TYPE 4, 5, 6 & 7 PULL BOX



PULL BOX TYPE	* SIZE (IN.)				
	A	B	C	D	E
1	14	14	12	12	12
2	21	14	18	11	12
3	33	20	30	17	12
4S	38	26	36	21	18
4	38	26	36	24	36
5S	50	32	48	30	18
5	50	32	48	30	36
6	38	26	36	24	36
7	50	32	48	30	36

- NOTES:**
- SIZES SHOWN ARE MINIMUM TRADE SIZES.
 - DIMENSIONS "C" AND "D" ARE MINIMUM REQUIREMENTS WITH A TOLERANCE OF NO MORE THAN $\pm .050$ IN/ + 2 IN*
 - EXTEND COARSE GRAVEL 6" BEYOND BASE OF PULL BOX
 - PULL BOXES TYPE 4, 4S, 5, 5S, 6 & 7 SHALL HAVE 1* *DEGREE* FLARES FOR MAXIMUM STRENGTH
 - DESIGN PULL BOXES TO MEET OR EXCEED THE TIER LOADING SET FORTH IN SPECIFICATIONS 647.

Guidelines For Usage On Metric Projects

When these details are incorporated into plans and or projects that are being prepared or constructed in metric units, exact or precise conversion to metric units is not required. The dimensions shown that are in feet and inches may be converted to corresponding metric units using the following "Rounded-Off" conversion factors: 1" = 25mm, 4" = 100mm, and 12" or 1' = 300mm. All measurement notes that refer to linear feet and square yards shall be interpreted to mean linear meters and square meters.

COBB COUNTY		DATE
DEPARTMENT OF TRANSPORTATION		
TRAFFIC SIGNAL DETAIL PULLBOX ASSEMBLY AND INSTALLATION		
BY	REVISION	DRAWING No.
		40-001

NOT TO SCALE - REPORT ERRORS