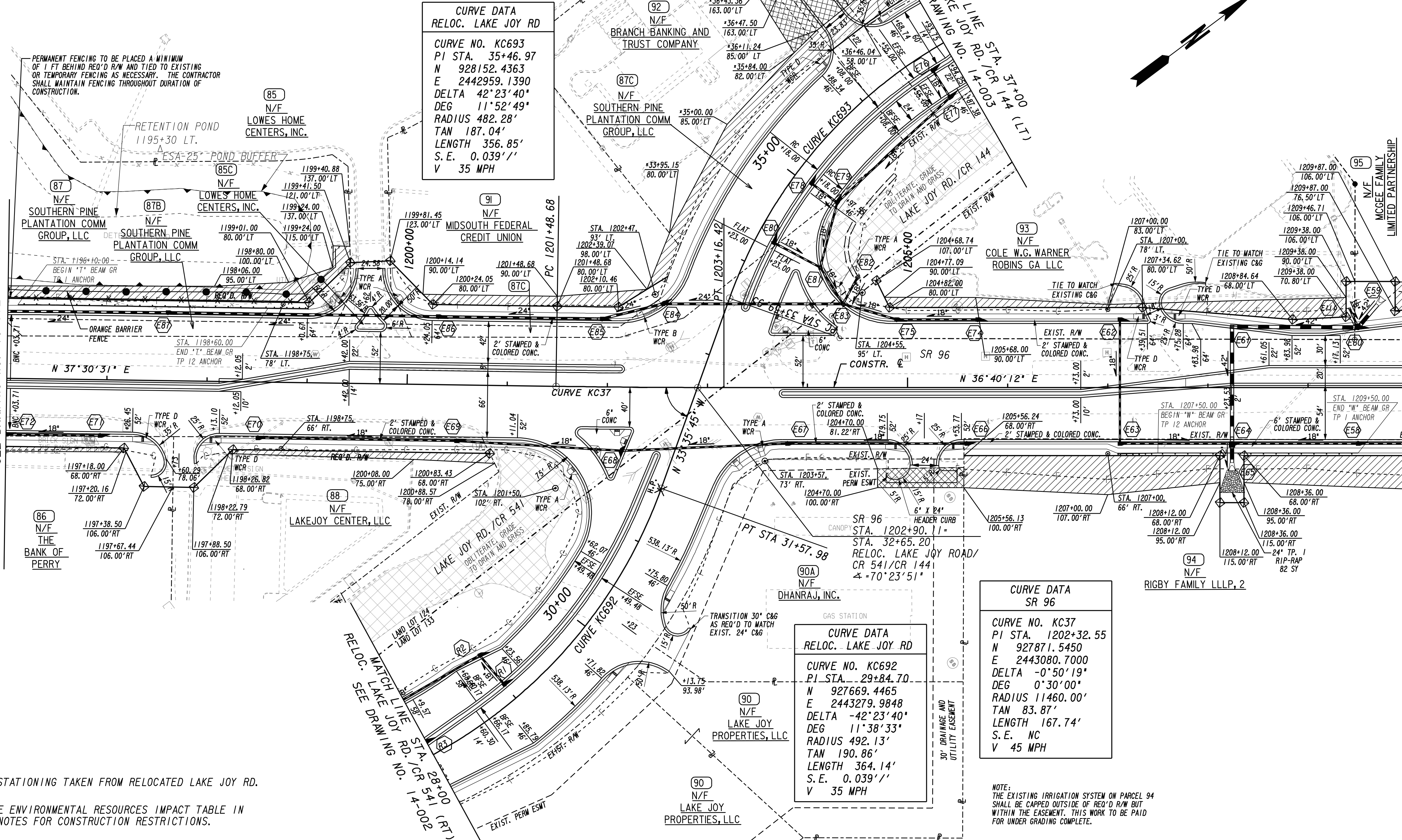


ESA - SEE ENVIRONMENTAL RESOURCES IMPACT TABLE IN GENERAL NOTES FOR CONSTRUCTION RESTRICTIONS.  
 SEE SHEET 18-001 FOR ADDITIONAL INTERSECTION DETAILS



**CURVE DATA  
 RELOC. LAKE JOY RD**  
 CURVE NO. KC693  
 PI STA. 35+46.97  
 N 928152.4363  
 E 2442959.1390  
 DELTA 42°23'40"  
 DEG 11°52'49"  
 RADIUS 482.28'  
 TAN 187.04'  
 LENGTH 356.85'  
 S.E. 0.039'/'  
 V 35 MPH

**CURVE DATA  
 RELOC. LAKE JOY RD**  
 CURVE NO. KC692  
 PI STA. 29+84.70  
 N 927669.4465  
 E 2443279.9848  
 DELTA -42°23'40"  
 DEG 11°38'33"  
 RADIUS 492.13'  
 TAN 190.86'  
 LENGTH 364.14'  
 S.E. 0.039'/'  
 V 35 MPH

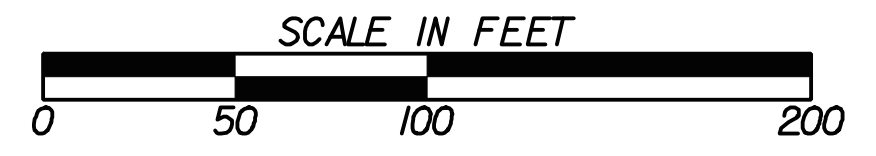
**CURVE DATA  
 SR 96**  
 CURVE NO. KC37  
 PI STA. 1202+32.55  
 N 927871.5450  
 E 2443080.7000  
 DELTA -0°50'19"  
 DEG 0°30'00"  
 RADIUS 11460.00'  
 TAN 83.87'  
 LENGTH 167.74'  
 S.E. NC  
 V 45 MPH

- \* DENOTES STATIONING TAKEN FROM RELOCATED LAKE JOY RD.
- \* EAS - SEE ENVIRONMENTAL RESOURCES IMPACT TABLE IN GENERAL NOTES FOR CONSTRUCTION RESTRICTIONS.

PROPERTY AND EXISTING R/W LINE	---
REQUIRED R/W LINE	---
CONSTRUCTION LIMITS	---
EASEMENT FOR CONSTR & MAINTENANCE OF SLOPES AND UTILITIES	▨
EASEMENT FOR CONSTR OF SLOPES	▨
EASEMENT FOR CONSTR OF DRIVES	▨

BEGIN LIMIT OF ACCESS.....	BLA
END LIMIT OF ACCESS.....	ELA
LIMIT OF ACCESS	---
R/W AND LIMIT OF ACCESS	---
EXISTING R/W LINE	---

**ATKINS**



REVISION DATES	
09/25/14	

STATE OF GEORGIA  
 DEPARTMENT OF TRANSPORTATION  
 OFFICE: PROGRAM DELIVERY  
**MAINLINE PLAN**  
 SR 96 WIDENING  
 SR 96  
 STA. 1196+00 TO STA. 1210+00

DRAWING NO. 13-003

USE ON CONSTRUCTION