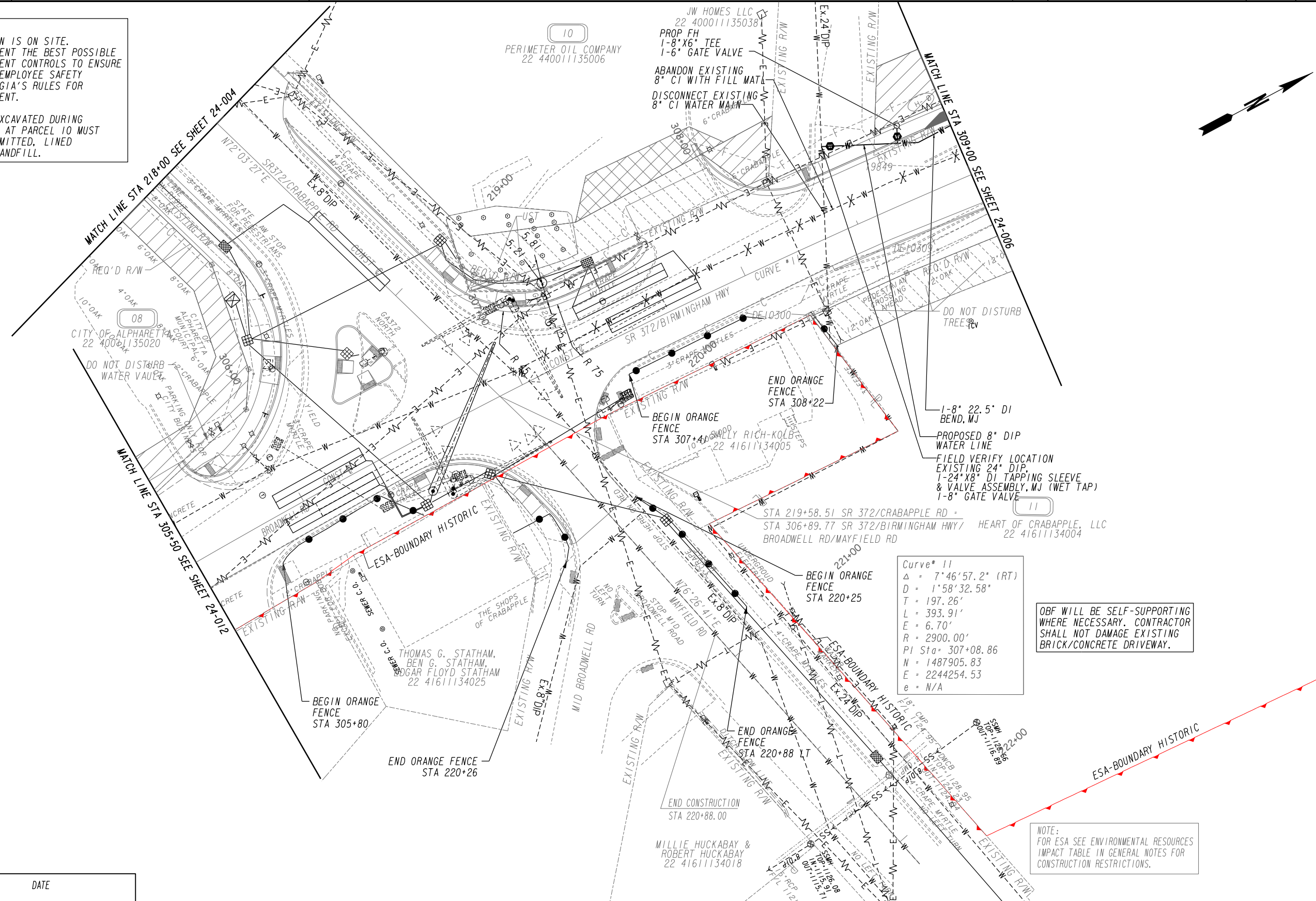


NOTES:
 PARCEL 10: CONTAMINATION IS ON SITE. CONTRACTOR SHALL IMPLEMENT THE BEST POSSIBLE ENGINEERING AND MANAGEMENT CONTROLS TO ENSURE ADEQUATE PROTECTION OF EMPLOYEE SAFETY IN ACCORDANCE WITH GEORGIA'S RULES FOR HAZARDOUS WASTE MANAGEMENT.

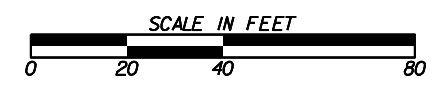
ANY CONTAMINATED SOIL EXCAVATED DURING CONSTRUCTION ACTIVITIES AT PARCEL 10 MUST BE DISPOSED OF AT A PERMITTED, LINED MUNICIPAL SOLID WASTE LANDFILL.



OBF WILL BE SELF-SUPPORTING WHERE NECESSARY. CONTRACTOR SHALL NOT DAMAGE EXISTING BRICK/CONCRETE DRIVEWAY.

NOTE:
 FOR ESA SEE ENVIRONMENTAL RESOURCES IMPACT TABLE IN GENERAL NOTES FOR CONSTRUCTION RESTRICTIONS.

APPROVED BY FULTON COUNTY DEPARTMENT OF WATER RESOURCES	DATE
PROPERTY AND EXISTING R/W LINE	---
REQUIRED R/W LINE	---
CONSTRUCTION LIMITS	---
ESMT FOR CONSTR & MAINT OF SLOPES	---
ESMT FOR CONSTR OF SLOPES	---
ESMT FOR CONSTR OF DRIVES	---
MILL & OVERLAY CONSTRUCTION	---
ESMT FOR CONSTR OF DRAINAGE	---



REVISION DATES	
6/21/17	

STATE OF GEORGIA
 DEPARTMENT OF TRANSPORTATION
 OFFICE: PROGRAM DELIVERY

UTILITY PLANS

SR372 CRABAPPLE RD/BIRMINGHAM HWY
 INTERSECTION IMPROVEMENTS
 CSHP-0007-00(1313)

8/13/2015

DRAWING No.
24-005

USE ON CONSTRUCTION