

**CarterBurgess**

Atlanta, GA

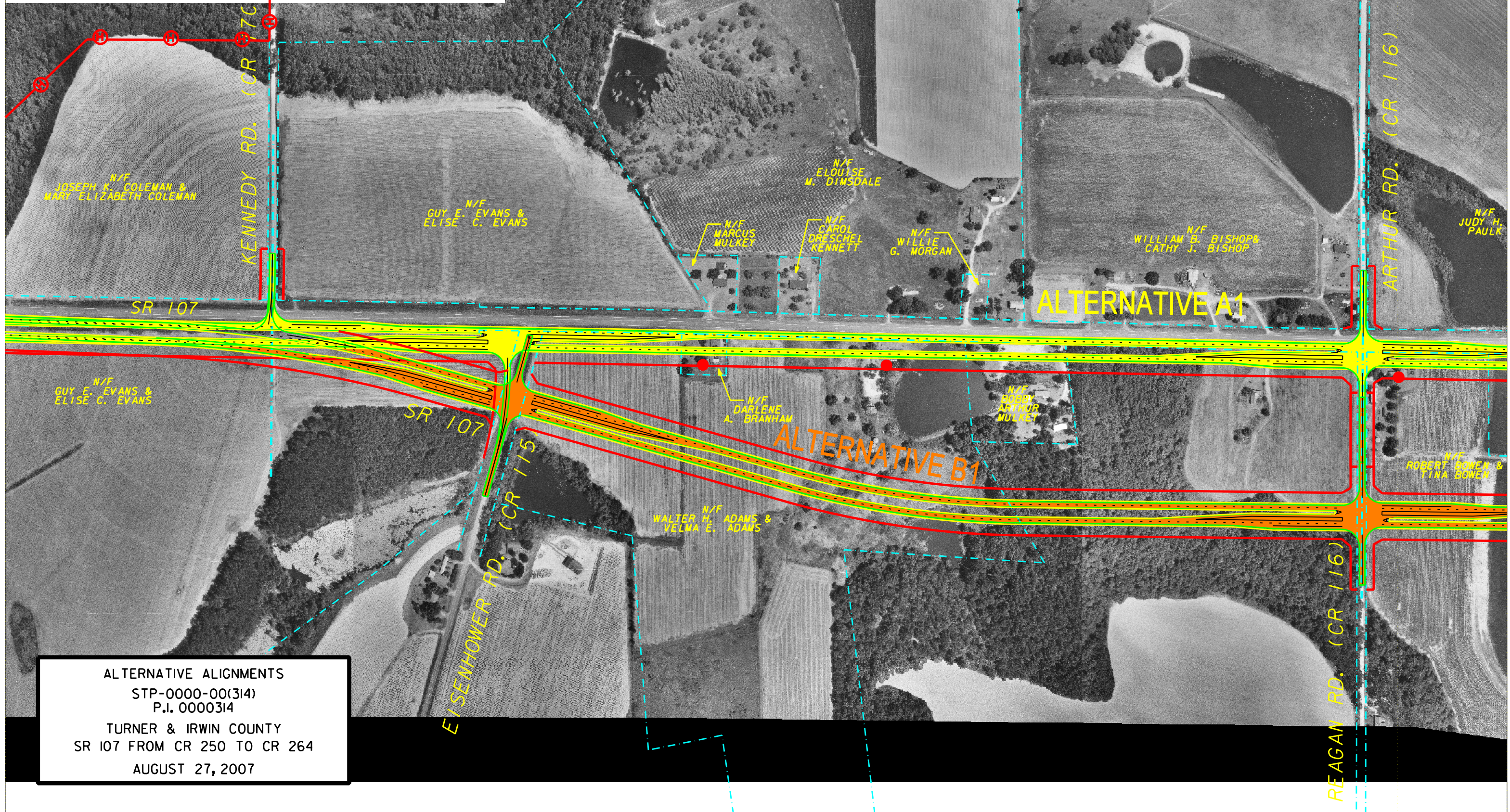
**McGee Partners, Inc.**  
www.mcgeepartners.com

**Georgia Department of Transportation**

**LEGEND**

- ALTERNATIVE A1
- ALTERNATIVE B1
- PROPOSED RIGHT OF WAY
- EXISTING RIGHT OF WAY AND PROPERTY LINE
- HISTORIC PROPERTY
- DISPLACEMENT

SCALE IN FEET  
0 200 400 800



ALTERNATIVE ALIGNMENTS  
STP-0000-00(314)  
P.I. 0000314  
TURNER & IRWIN COUNTY  
SR 107 FROM CR 250 TO CR 264  
AUGUST 27, 2007