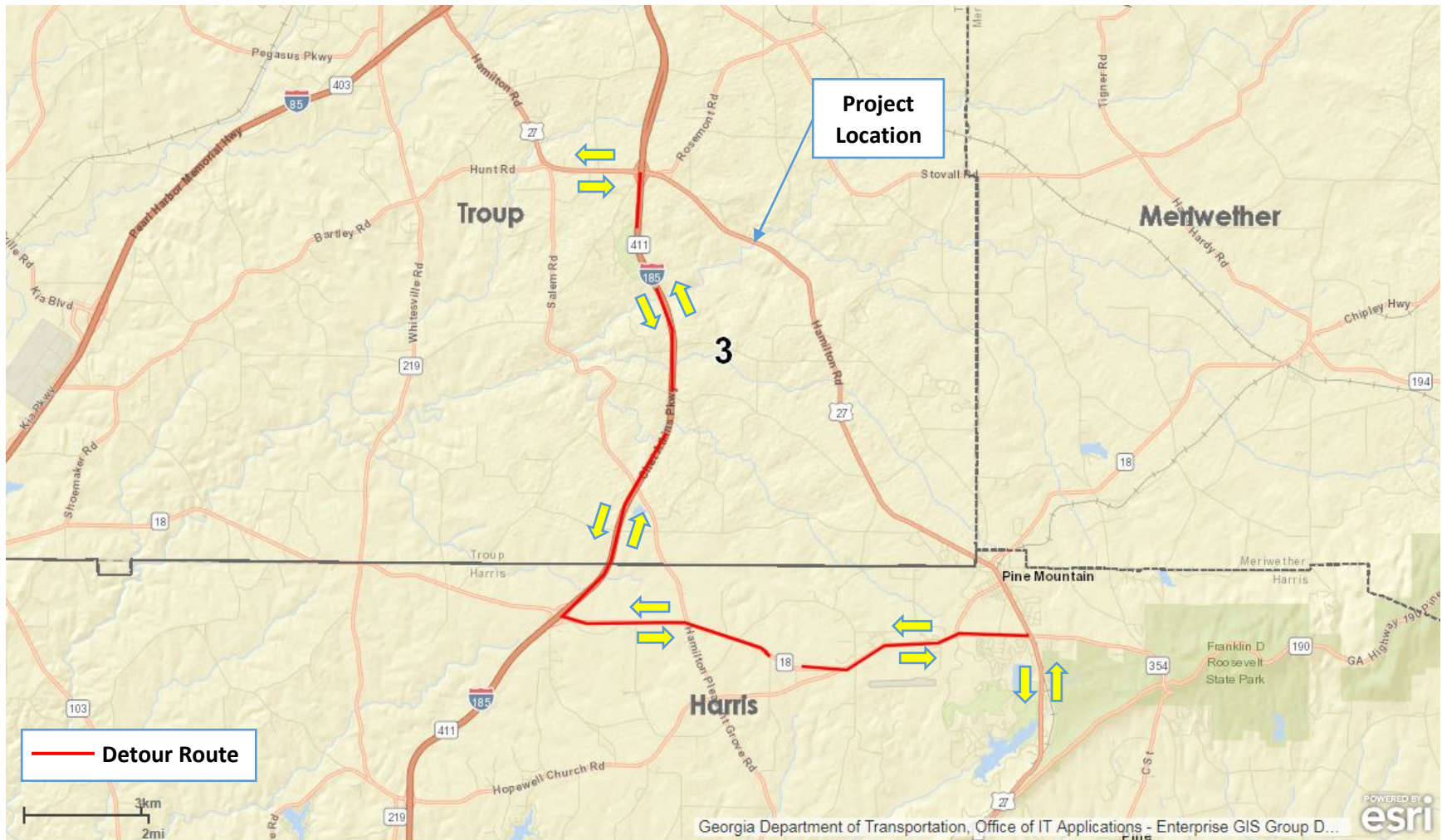




**Project Detour Map: PI No. 0013941, Troup County**  
**SR 1 @ FLAT SHOAL CREEK IN LAGRANGE**  
Detour Length is 16.3 miles vs. Original Route Length of 10.9 miles.



**NOTES:** The section of SR 1/US 27 containing PI No. 0013941 stretches between Interstate 185 and Pine Mountain, GA. Detouring this route to a roadway with a functional classification of Principal Arterial or better requires a 5.4 mile increase in route length.